

WICHITA FALLS, TEXAS

RNAV (GPS) RWY 15R

APCH CRS 153°	Rwy ldg 13,100 TDZE 998 Arprt Elev 1019
-------------------------	--

[USAF]

SHEPPARD AFB/WICHITA FALLS MUNI (KSPS)

RNP APCH

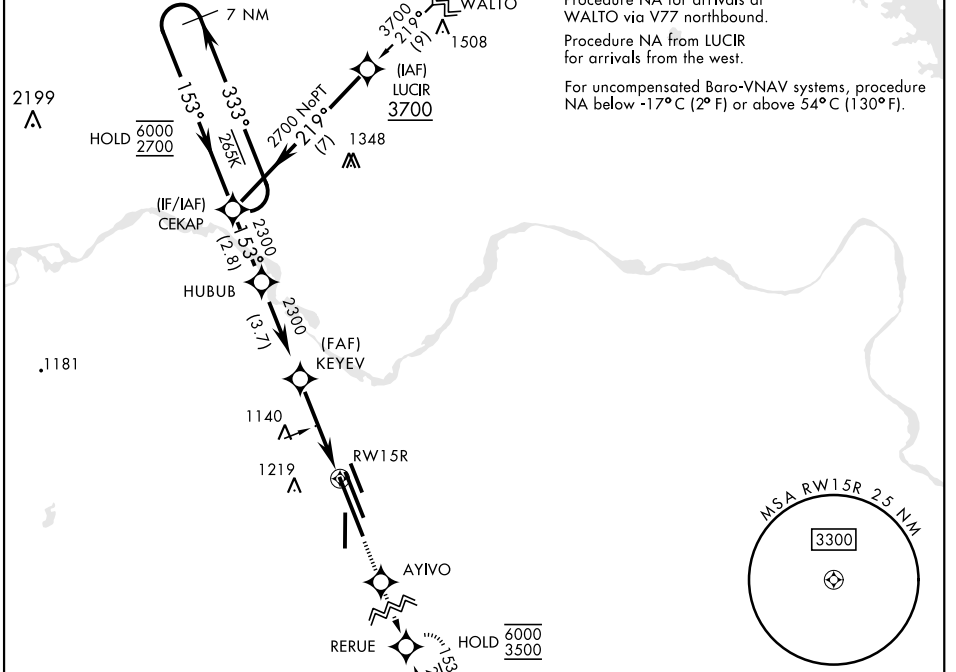


MISSED APPROACH: Climb to 3500 direct AYIVO and via 153° track to RERUE and hold.

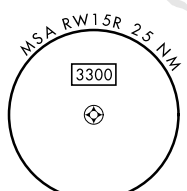
▼ * When ALS inop, increase CAT AB vis to ¾ mile; CAT CDE vis to ⅞ mile.
 ** When ALS inop, increase CAT AB vis to 1 mile; CAT CDE vis to 1¼ miles.

ATIS ★ 132.05 269.9	APP CON 118.2 269.025	TOWER ★ 119.75 0 279.525 (CTAF)	GND CON 125.5 289.4	CLNC DEL 121.2 282.225	ASR
-------------------------------	---------------------------------	---	-------------------------------	----------------------------------	-----

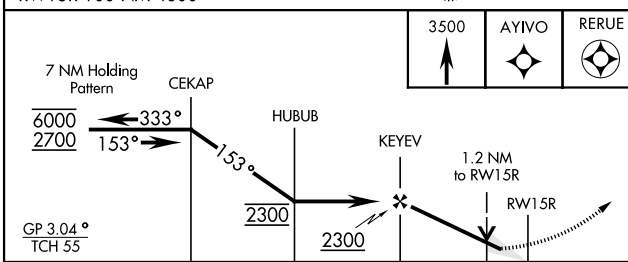
*** Circling NA West of Rwy 15R-33L.



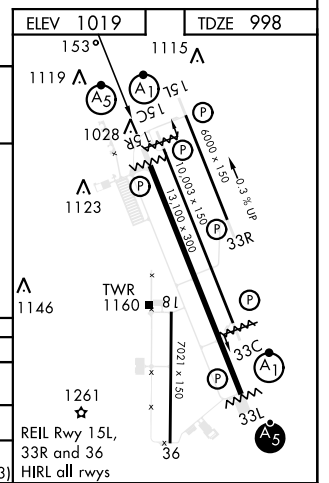
Procedure NA for arrivals at WALTO via V77 northbound.
 Procedure NA from LUCIF for arrivals from the west.
 For uncompensated Baro-VNAV systems, procedure NA below -17°C (2°F) or above 54°C (130°F).



EMERG SAFE ALT FROM RWY 15R 100 NM 4600



	3500		AYIVO	RERUE	
CATEGORY	A	B	C	D	E
LNAV/VNAV DA*	1249-½ 251 (300-½)	1252-½ 254 (300-½)	1260-½ 262 (300-½)	1271-½ 273 (300-½)	
LNAV MDA**	1420-½ 422 (500-½)		1420-¾ 422 (500-¾)		
*** CIRCLING	1420-1 401 (500-1)	1480-1 461 (500-1)	1480-1½ 461 (500-1½)	2020-3 1001 (1100-3)	2080-3 1061 (1100-3)



WICHITA FALLS, TEXAS

33°59'N-98°30'W

SHEPPARD AFB/WICHITA FALLS MUNI (KSPS)

Amdt 5 14JUL22

RNAV (GPS) RWY 15R

SC-2, 28 NOV 2024 to 26 DEC 2024

SC-2, 28 NOV 2024 to 26 DEC 2024