

# RNAV (GPS) RWY 33C

APCH CRS <b>333°</b>	Rwy Idg <b>10.003</b> TDZE <b>989</b> Arprt Elev <b>1019</b>
-------------------------	--

[USAF]

SHEPPARD AFB/WICHITA FALLS MUNI (KSPS)

RNP APCH-GPS

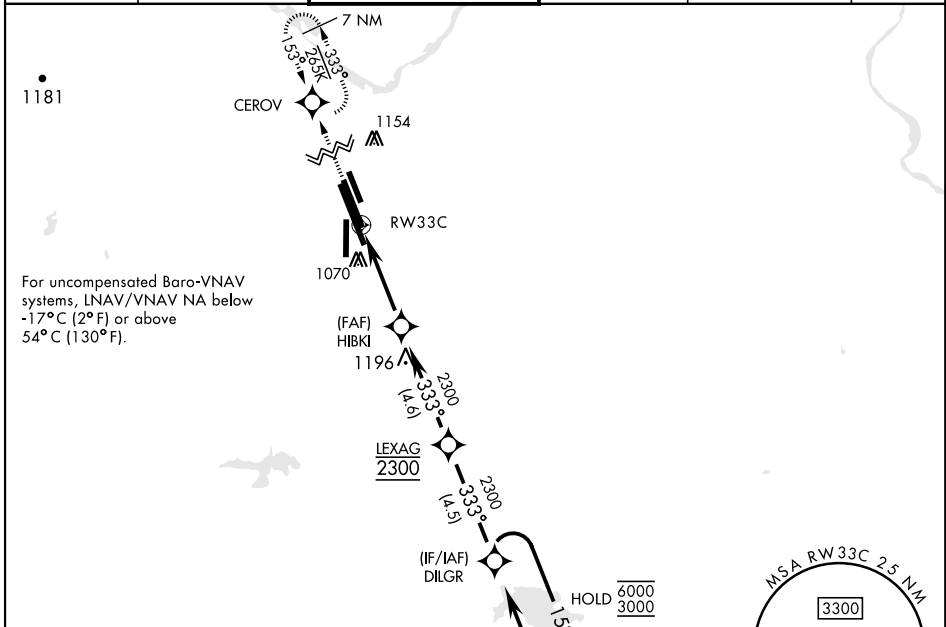
ALSF-1

MISSED APPROACH: Climb to 3300 direct CEROV and hold.

▼ \* When ALS inop, increase vis to 1 mile.  
\*\* Circling NA southwest of Rwy 15R-33L.

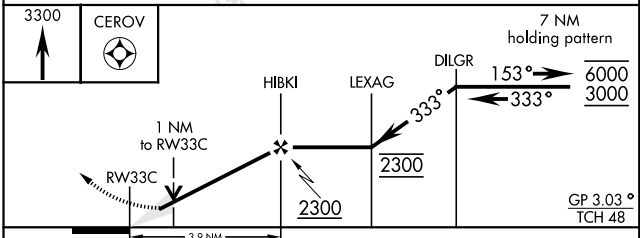
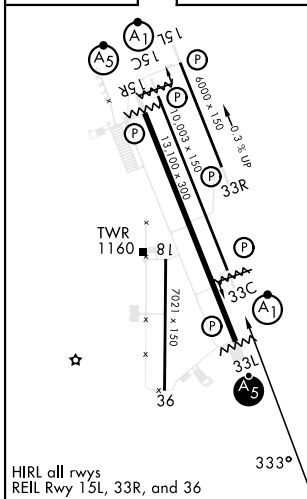


ATIS ★ <b>132.05 269.9</b>	APP CON <b>118.2 269.025</b>	TOWER ★ <b>119.75 0 279.525 (CTAF)</b>	GND CON <b>125.5 289.4</b>	CLNC DEL <b>121.2 282.225</b>	ASR
-------------------------------	---------------------------------	---	-------------------------------	----------------------------------	-----



EMERG SAFE ALT 100 NM 4600

ELEV	1019	TDZE	989
------	------	------	-----



CATEGORY	A	B	C	D	E
LNAV/VNAV DA *	1322-½		333	(400-½)	
LNAV MDA *	1340-½	351 (400-½)	1340-⅝	351	(400-⅝)
** CIRCLING	1440-1 421 (500-1)	1480-1 461 (500-1)	1480-1½ 461 (500-1½)	2020-3 1001 (1100-3)	2080-3 1061 (1100-3)

# RNAV (GPS) RWY 33C

SC-2, 28 NOV 2024 to 26 DEC 2024

SC-2, 28 NOV 2024 to 26 DEC 2024