

VOR/DME-E

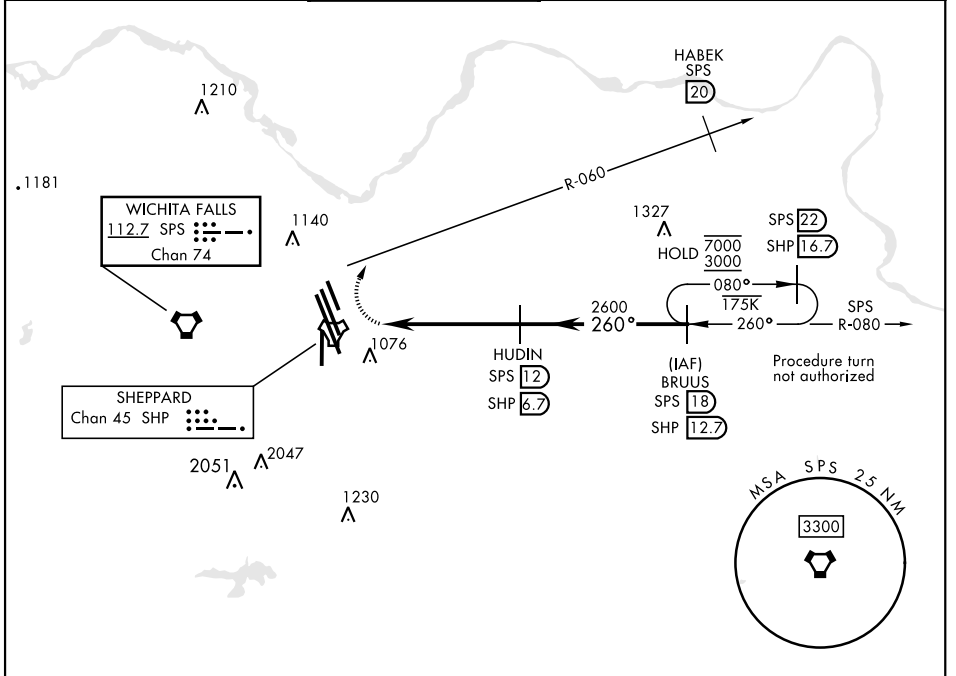
VORTAC SPS 112.7 Chan 74	APCH CRS 260°	Rwy ldg TDZE Arpt Elev N/A N/A 1019
--	-------------------------	--

[USAF]

SHEPPARD AFB/WICHITA FALLS MUNI (KSPS)

RADAR required	MISSED APPROACH: Climbing right turn to 3200, intcp SPS VORTAC R-060 to 20 DME (HABEK). Expect RADAR vectors.
▼ * Circling not authorized W of Rwy 15R-33L.	

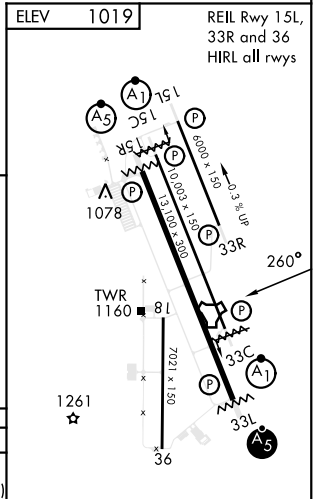
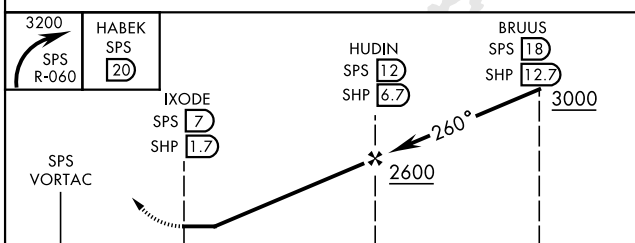
ATIS ★ 132.05 269.9	APP CON 118.2 269.025	TOWER ★ 119.75 0 279.525 (CTAF)	GND CON 125.5 289.4	CLNC DEL 121.2 282.225	ASR
-------------------------------	---------------------------------	---	-------------------------------	----------------------------------	-----



SC-2, 28 NOV 2024 to 26 DEC 2024

SC-2, 28 NOV 2024 to 26 DEC 2024

EMERG SAFE ALT 100 NM 4600



CATEGORY	A	B	C	D	E
◻ CIRCLING*	1480-17/8	461	(500-17/8)	2020-3 1001(1100-3)	2080-3 1061(1100-3)

VOR/DME-E