


WAAS CH 65815 W01A	APP CRS 015°	Rwy Idg 7012 TDZE 76 Apt Elev 80
--	------------------------	---

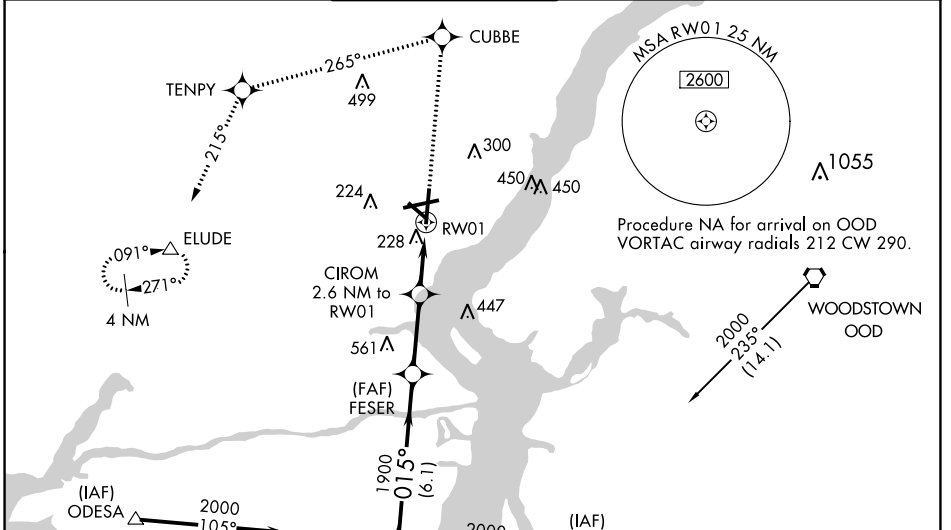
RNAV (GPS) RWY 1

NEW CASTLE (ILG)

⚠ Inoperative table does not apply to LPV all Cats and LNAV Cats A and B. Baro-VNAV NA when using Philadelphia Intl altimeter setting. For uncompensated Baro-VNAV systems, LNAV/VNAV NA below -15°C (5°F) or above 49°C (120°F). DME/DME RNP-0.3 NA. Visibility reduction by helicopters NA. When local altimeter setting not received, use Philadelphia Intl altimeter setting: increase LPV DA to 380, LNAV/VNAV DA to 579, and all MDAs 60 feet; increase LNAV/VNAV all Cats visibility to RVR 6000 and Circling Cat D visibility ¼ SM. For inoperative MALSR, increase LNAV Cats C and D visibility ¼ mile. For inoperative MALSR, when using Philadelphia Intl altimeter setting, increase LNAV visibility Cat C ¼ mile.

MALSR
 MISSED APPROACH: Climb to 2000 direct CUBBE and left turn via track 265° to TENPY and via track 214° to ELUDE and hold.

ATIS 123.95	PHILADELPHIA APP CON 118.35 323.1	WILMINGTON TOWER* 126.0 (CTAF) 352.05	GND CON 121.7 275.8	CLNC DEL 119.95	UNICOM 122.95
-----------------------	---	--	-------------------------------	---------------------------	-------------------------

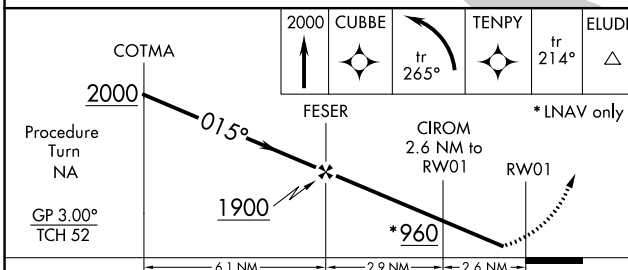


NE-3, 28 NOV 2024 to 26 DEC 2024

NE-3, 28 NOV 2024 to 26 DEC 2024

ELEV 80	D TDZE 76
----------------	-------------------------

REIL Rwy 9, 19 and 27
 HIRL Rwy 1-19 and 9-27
 MRL Rwy 14-32



CATEGORY	A	B	C	D
LPV DA		326/50	250 (300-1)	
LNAV/VNAV DA		525/50	449 (500-1)	
LNAV MDA		480/50	404 (400-1)	
CIRCLING	540-1 460 (500-1)	560-1 480 (500-1)	600-1½ 520 (600-1½)	800-2¼ 720 (800-2¼)

