

WAAS CH 53515 W27A	APP CRS 268°	Rwy ldg 7000 TDZE 72 Apt Elev 80
--	------------------------	---

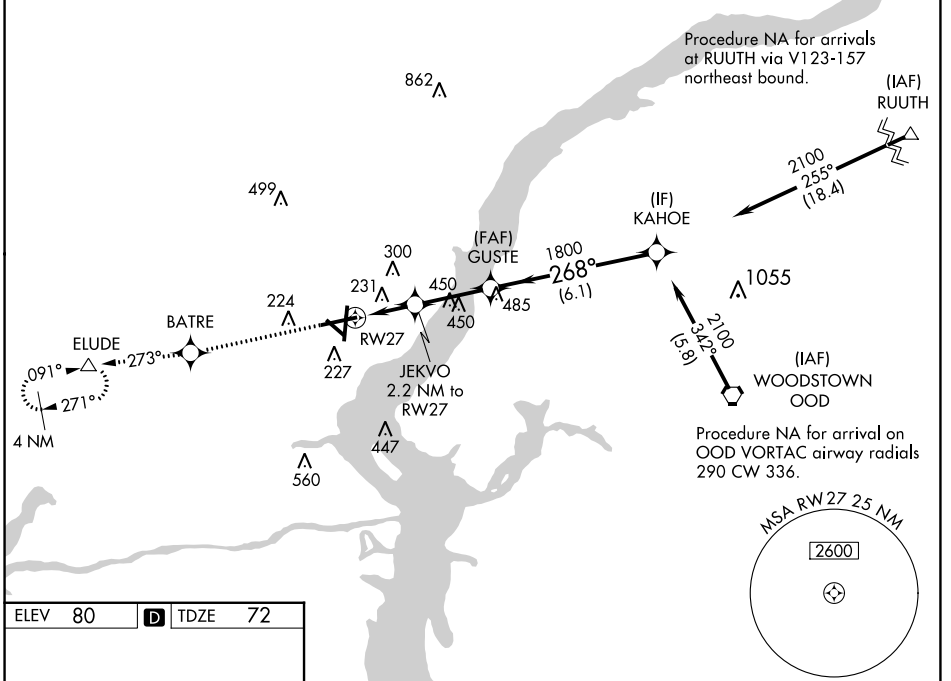
RNAV (GPS) RWY 27

NEW CASTLE (ILG)

⚠ Baro-VNAV NA when using Philadelphia Intl altimeter setting. For uncompensated Baro-VNAV systems, LNAV/VNAV DA NA below -15°C (5°F) or above 39°C (102°F). DME/DME RNP-0.3 NA. Helicopter visibility reduction below ¼ SM NA. When local altimeter setting not received, use Philadelphia Intl altimeter setting: increase LPV DA to 480, LNAV/VNAV DA to 584, and all MDA's 60 feet; increase LPV all Cats and LNAV Cat C/D visibility ½ SM and LNAV/VNAV all Cats and Circling Cat D visibility ¼ SM.

⚠ MISSED APPROACH: Climb to 2000 direct BATRE and via track 273° to ELUDE and hold.

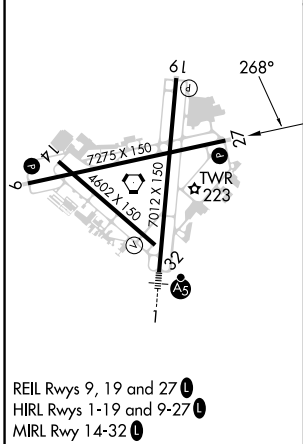
ATIS 123.95	PHILADELPHIA APP CON 118.35 323.1	WILMINGTON TOWER* 126.0 (CTAF) 352.05	GND CON 121.7 275.8	CLNC DEL 119.95	UNICOM 122.95
-----------------------	---	--	-------------------------------	---------------------------	-------------------------



NE-3, 28 NOV 2024 to 26 DEC 2024

NE-3, 28 NOV 2024 to 26 DEC 2024

ELEV 80	D	TDZE 72
---------	----------	---------



CATEGORY	A	B	C	D
LPV DA	426-1½	354 (400-1½)		
LNAV/VNAV DA	530-1½	458 (500-1½)		
LNAV MDA	500-1	428 (500-1)	500-1¼	428 (500-1¼)
CIRCLING	540-1 460 (500-1)	560-1 480 (500-1)	600-1½ 520 (600-1½)	800-2¼ 720 (800-2¼)