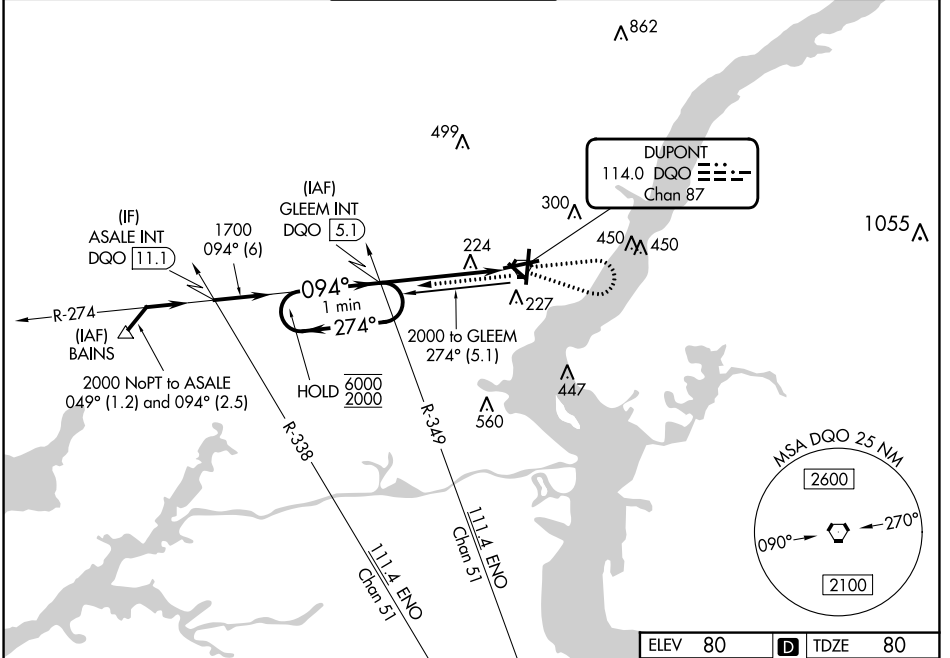


|  |                        |   |
|--|------------------------|---|
| VORTAC DQO<br><b>114.0</b><br>Chan <b>87</b> | APP CRS<br><b>094°</b> | Rwy Idg <b>7000</b><br>TDZE <b>80</b><br>Apt Elev <b>80</b> |
|--|------------------------|---|

# VOR RWY 9

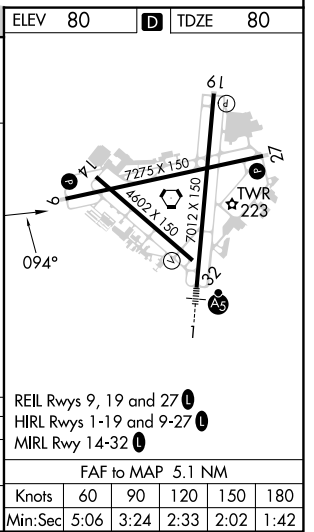
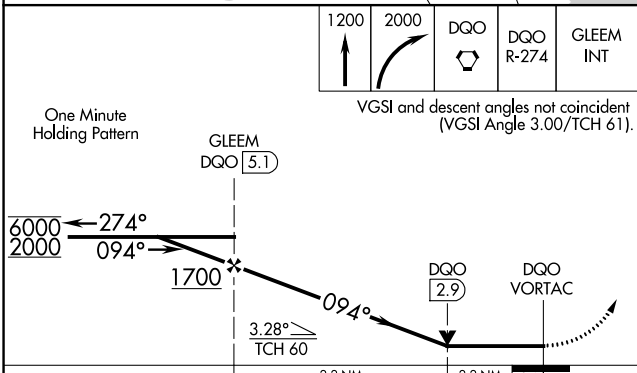
NEW CASTLE (ILG)

|  |   |  |                               |                           |                         |
|--|---|--|-------------------------------|---------------------------|-------------------------|
| <p><b>V</b> VDP NA when using Philadelphia Intl altimeter setting. When local altimeter setting not received, use Philadelphia Intl altimeter setting and increase all MDAs 60 feet and Circling visibility Cats A and D 1/2 SM.</p> |   | <p>MISSED APPROACH: Climb to 1200 then climbing right turn to 2000 direct DQO VORTAC then on DQO VORTAC R-274 to GLEEM INT/DQO 5.1 DME and hold.</p> |                               |                           |                         |
| ATIS<br><b>123.95</b>  | PHILADELPHIA APP CON<br><b>118.35 323.1</b> | WILMINGTON TOWER *<br><b>126.0</b> (CTAF) <b>352.05</b>  | GND CON<br><b>121.7 275.8</b> | CLNC DEL<br><b>119.95</b> | UNICOM<br><b>122.95</b> |



NE-3, 28 NOV 2024 to 26 DEC 2024

NE-3, 28 NOV 2024 to 26 DEC 2024



| CATEGORY | A                    | B                      | C      | D            |
|----------|----------------------|------------------------|--------|--------------|
| S-9      | 860-1<br>780 (800-1) | 860-1¼<br>780 (800-1¼) | 860-2½ | 780 (800-2½) |
| CIRCLING | 860-1<br>780 (800-1) | 860-1¼<br>780 (800-1¼) | 860-2½ | 780 (800-2½) |