

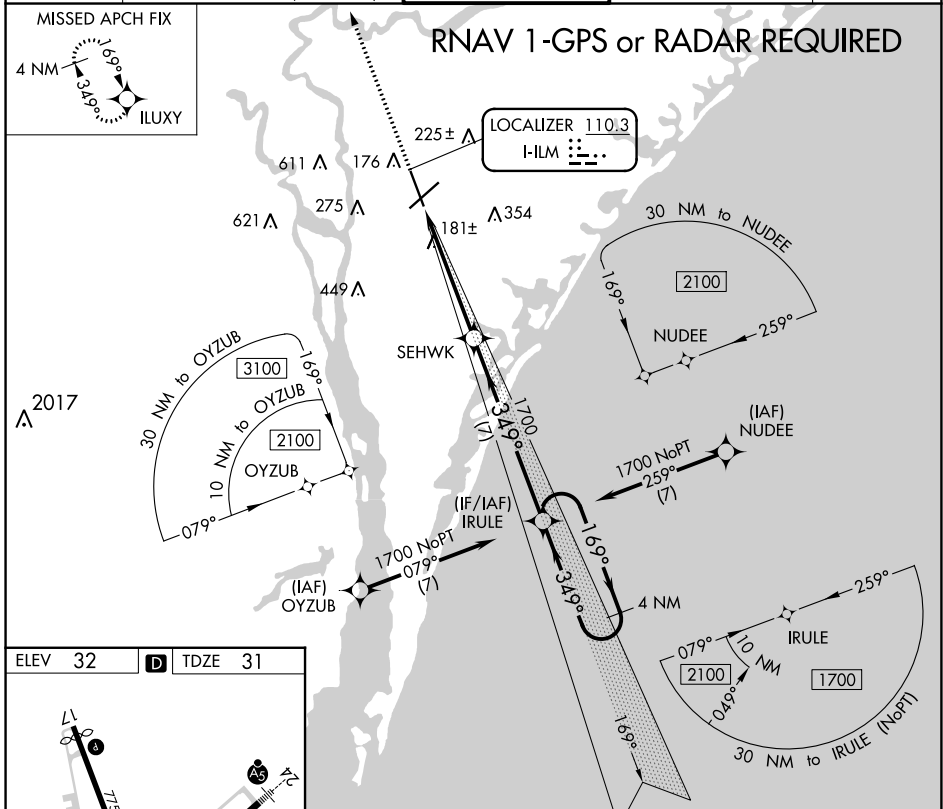
LOC I-ILM 110.3	APP CRS 349°	Rwy Idg 7204 TDZE 31 Apt Elev 32
---------------------------	------------------------	---

ILS Z RWY 35

WILMINGTON INTL (ILM)

NA	RNAV 1-GPS required.	MALSR 	MISSED APPROACH: Climb to 3000 direct ILUXY and hold.
----	----------------------	-----------	---

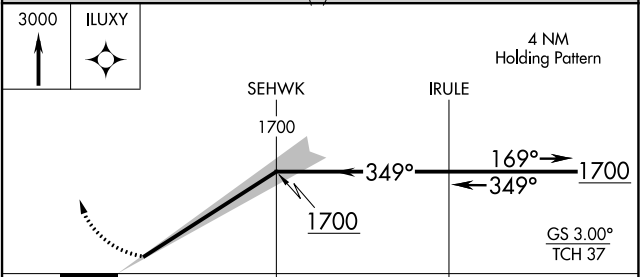
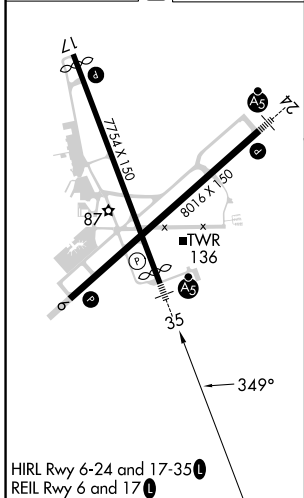
ATIS 124.975	WILMINGTON APP CON ★ 118.25 284.65 (164°-343°) 135.75 317.425 (344°-163°)	WILMINGTON TOWER ★ 119.9 (CTAF) 239.3	GND CON 121.9 348.6	UNICOM 122.95
------------------------	---	--	-------------------------------	-------------------------



SE-2, 28 NOV 2024 to 26 DEC 2024

SE-2, 28 NOV 2024 to 26 DEC 2024

ELEV 32	D	TDZE 31
---------	----------	---------



CATEGORY	A	B	C	D
S-ILS 35	242/24 211 (300-½)			