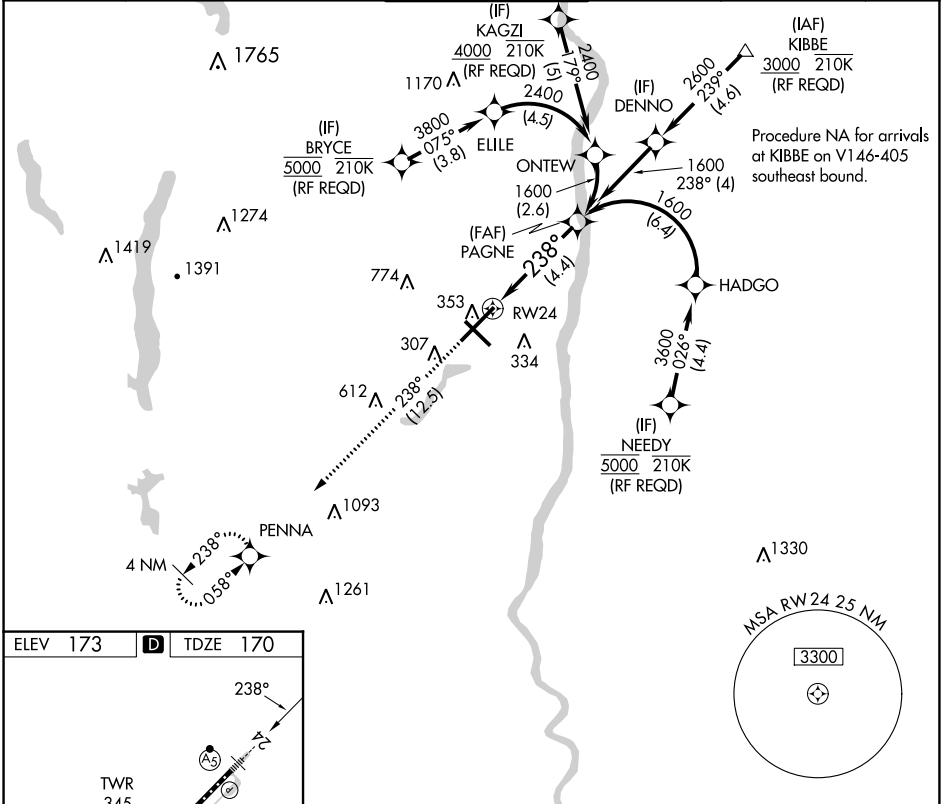


APP CRS	Rwy Idg	9509
238°	TDZE	170
	Apf Elev	173

RNAV (RNP) Z RWY 24

BRADLEY INTL (BDL)

<p>▼ For uncompensated Baro-VNAV systems, procedure NA below -18°C (0°F) or above 54°C (130°F). GPS required. For inop ALS, increase all Cats visibility to 1½ SM.</p>		<p>MALSR</p>	<p>MISSED APPROACH: Climb to 3000 on track 238° to PENNA and hold.</p>		
D-ATIS	BRADLEY APP CON	BRADLEY TOWER	GND CON	CLNC DEL	CPDLC
118.15	123.95 290.55 (061°-240°) 125.35 281.5 (241°-060°)	120.3 351.8	121.9 348.6	121.75 322.3	



NE-1, 28 NOV 2024 to 26 DEC 2024

NE-1, 28 NOV 2024 to 26 DEC 2024

ELEV 173	D	TDZE 170
----------	----------	----------

TDZ/CL Rwy 6 and 24
HIRL Rwy 6-24 and 15-33
REIL Rwy 6 and 15

3000	PENNA	VGSI and RNAV glidepath not coincident (VGSI Angle 3.00/TCH 71).	PAGNE	
↑			1600	
tr 238°				
	RW24		1600	
		See planview for multiple IF locations.	GP 3.00° TCH 55	
		4.4 NM		
CATEGORY	A	B	C	D
RNP 0.30 DA	622/60 452 (500-1½)			

AUTHORIZATION REQUIRED