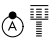


APP CRS	Rwy Idg	<b>9509</b>
<b>058°</b>	TDZE	<b>173</b>
	Apt Elev	<b>173</b>

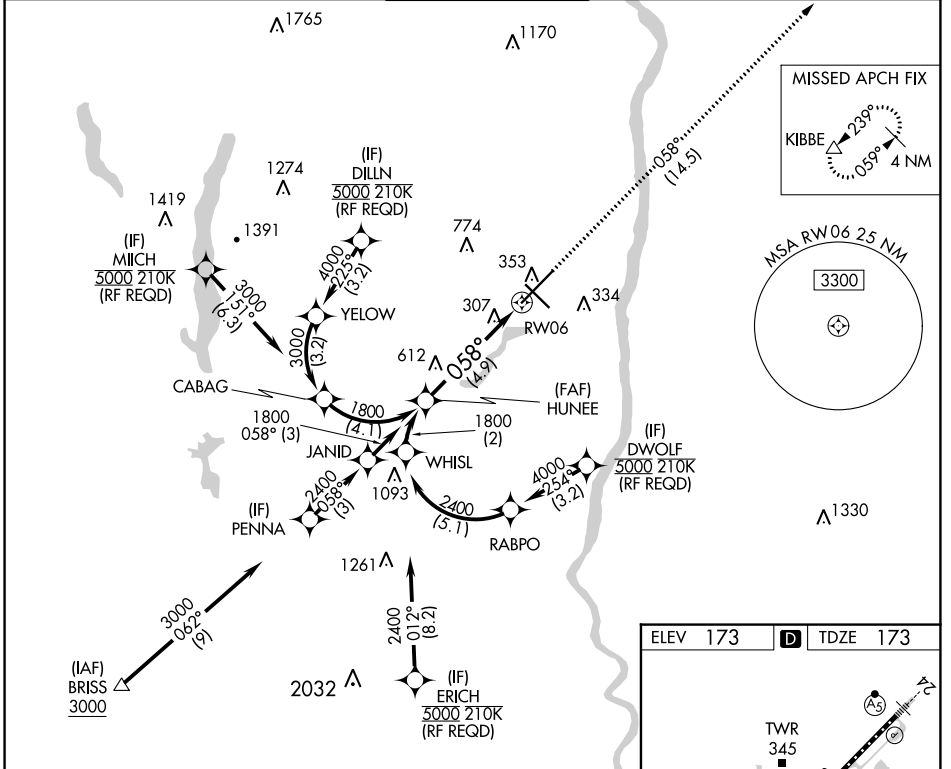
# RNAV (RNP) Z RWY 6

BRADLEY INTL (BDL)

For uncompensated Baro-VNAV systems, procedure NA below -18°C (0°F) or above 54°C (130°F). GPS required. For inop ALS, increase RNP 0.11 all Cats visibility to RVR 5500 and RNP 0.30 all Cats visibility to 1 3/8 SM.

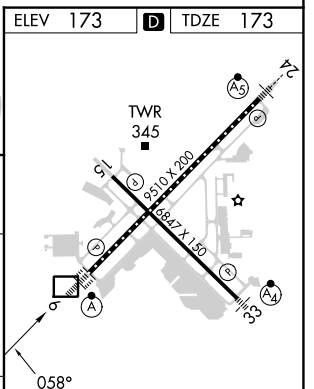
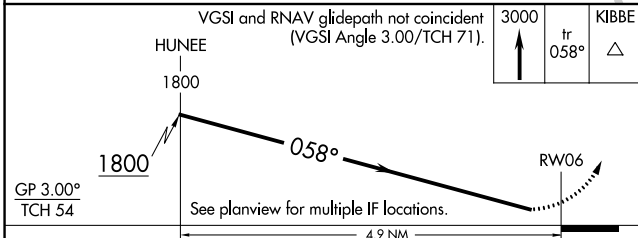
ALSF-2  MISSED APPROACH: Climb to 3000 on track 058° to KIBBE and hold.

D-ATIS	BRADLEY APP CON	BRADLEY TOWER	GND CON	CLNC DEL	CPDLC
<b>118.15</b>	<b>123.95 290.55</b> (061°-240°) <b>125.35 281.5</b> (241°-060°)	<b>120.3 351.8</b>	<b>121.9 348.6</b>	<b>121.75 322.3</b>	



NE-1, 28 NOV 2024 to 26 DEC 2024

NE-1, 28 NOV 2024 to 26 DEC 2024



CATEGORY	A	B	C	D
RNP 0.11 DA		545/40	372 (400-3/4)	
RNP 0.30 DA		672/50	499 (500-1)	

## AUTHORIZATION REQUIRED

TDZ/CL Rwy 6 and 24  
HIRL Rwys 6-24 and 15-33  
REIL Rwys 6 and 15