

WINK, TEXAS

AL-461 (FAA)

23054

VORTAC INK <b>112.1</b> Chan <b>58</b>	APP CRS <b>150°</b>	Rwy Idg TDZE Apt Elev	<b>5003</b> <b>2822</b> <b>2822</b>
--	------------------------	-----------------------------	---

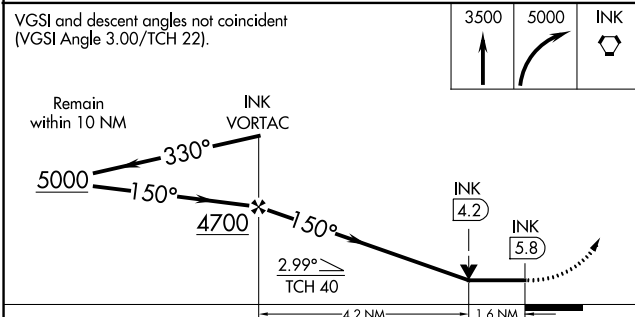
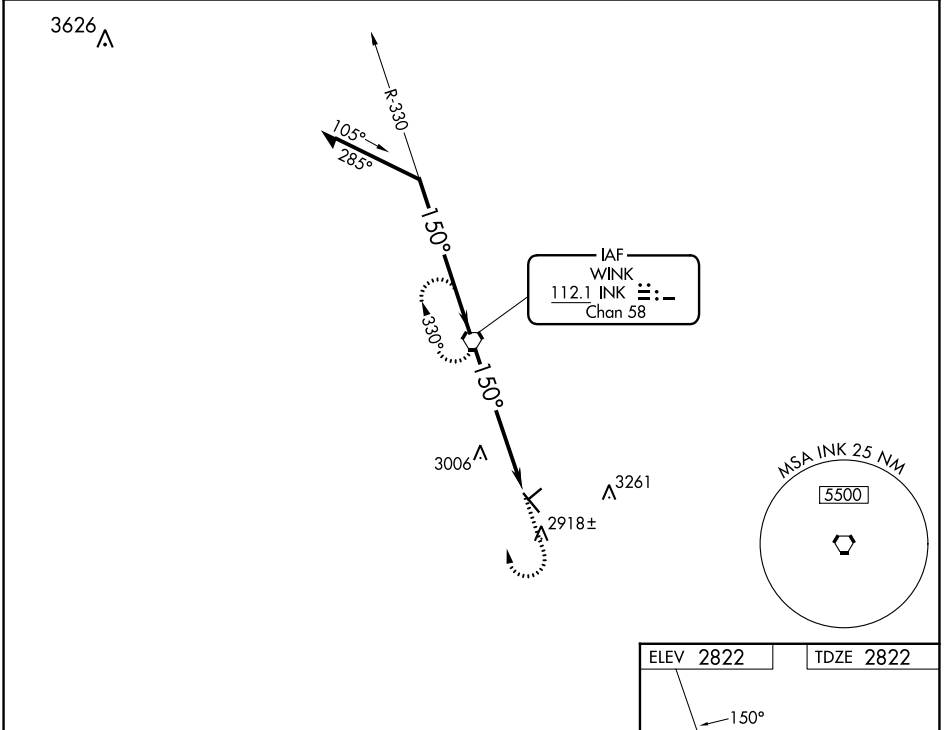
# VOR RWY 13

WINKLER COUNTY (INK)

**▲**  
**▲**

MISSED APPROACH: Climb to 3500 then climbing right turn to 5000 direct INK VORTAC and hold, continue climb-in-hold to 5000.

ASOS <b>118.325</b>	FORT WORTH CENTER <b>133.1 298.95</b>	UNICOM <b>123.0 (CTAF) 0</b>
------------------------	--	---------------------------------



ELEV 2822	TDZE 2822
-----------	-----------

MIRL Rwy 4-22 and 13-31 0

FAF to MAP 5.8 NM

Knots	60	90	120	150	180
Min:Sec	5:48	3:52	2:54	2:19	1:56

CATEGORY	A	B	C	D
S-13	3340-1	518 (600-1)	3340-1 3/8 518 (600-1 3/8)	NA
<b>C</b> CIRCLING	3340-1	518 (600-1)	3580-2 1/4 758 (800-2 1/4)	NA

WINK, TEXAS  
Amdt 10A 06OCT22

31°47'N-103°12'W

# WINKLER COUNTY (INK)

## VOR RWY 13

SC-3, 28 NOV 2024 to 26 DEC 2024

SC-3, 28 NOV 2024 to 26 DEC 2024