

NACHES FOUR DEPARTURE
10 NOV 16

23334
NACHES FOUR DEPARTURE

AL-465 (FAA)

YAKIMA AIR TRML/MCALISTER FLD (YKM)
YAKIMA, WASHINGTON

SPOKANE DEP CON*
123.8 263.15
ATIS
125.25
CLNC DEL
121.9
GND CON
121.9
YAKIMA TOWER*
133.25 257.8

**TOP ALTITUDE:
10000**

SEATTLE
116.8 SEA
Chan 115

WENATCHEE
114.35 EAT
Chan 90(Y)

EPHRATA
112.6 EPH
Chan 73

MOSES LAKE
115.0 MWH
Chan 97

SPOKANE
115.5 GEG
Chan 102

ELLENSBURG
117.9 ELN
Chan 126

WALLA WALLA
116.4 ALW
Chan 111

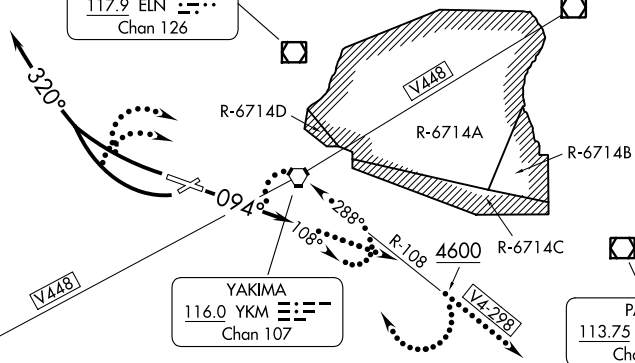
BATTLE GROUND
116.6 BTG
Chan 113

YAKIMA
116.0 YKM
Chan 107

PASCO
113.75 PSC
Chan 84(Y)

KLUCKITAT
112.3 LTJ
Chan 70

PENDLETON
114.7 PDT
Chan 94



TAKEOFF MINIMUMS

- Rwy 4: NA-obstacles.
- Rwy 9: Standard with minimum climb of 360' per NM to 4400.
- Rwy 22: Standard with minimum climb of 495' per NM to 6000.
- Rwy 27: Standard with minimum climb of 495' per NM to 6000.

NOTE: RADAR required.

(CONTINUED ON FOLLOWING PAGE)

NOTE: Chart not to scale.

YAKIMA, WASHINGTON
YAKIMA AIR TRML/MCALISTER FLD (YKM)



DEPARTURE ROUTE DESCRIPTION

TAKEOFF RUNWAY 9: Climb heading 094° for vector to assigned route/fix. Thence
TAKEOFF RUNWAYS 22, 27: Climbing right turn heading 320° for vector to assigned route/fix. Thence

. . . . maintain 10000 or assigned lower altitude. Expect clearance to filed altitude 5 minutes after departure.

LOST COMMUNICATIONS

If no transmissions are received for one minute after departure:

RUNWAY 9: Climb heading 094° and outbound YKM VORTAC R-108.

RUNWAYS 22, 27: Climbing right turn direct YKM VORTAC and outbound YKM R-108, eastbound aircraft V4-V298 continue on course, all other departures continue climb on YKM R-108, until 4600, then climbing right turn direct YKM VORTAC and hold to cross YKM VORTAC at or above MEA or MCA for route of flight.

NW-1, 28 NOV 2024 to 26 DEC 2024

NW-1, 28 NOV 2024 to 26 DEC 2024