


RNAV (RNP) Y RWY 27

YAKIMA AIR TRML/MCALLISTER FLD (YKM)

APP CRS	Rwy Idg	7604
274°	TDZE	1068
	Apt Elev	1099

RNP APCH - GPS. From MUDE or OVTEE or YIGUN: RF.

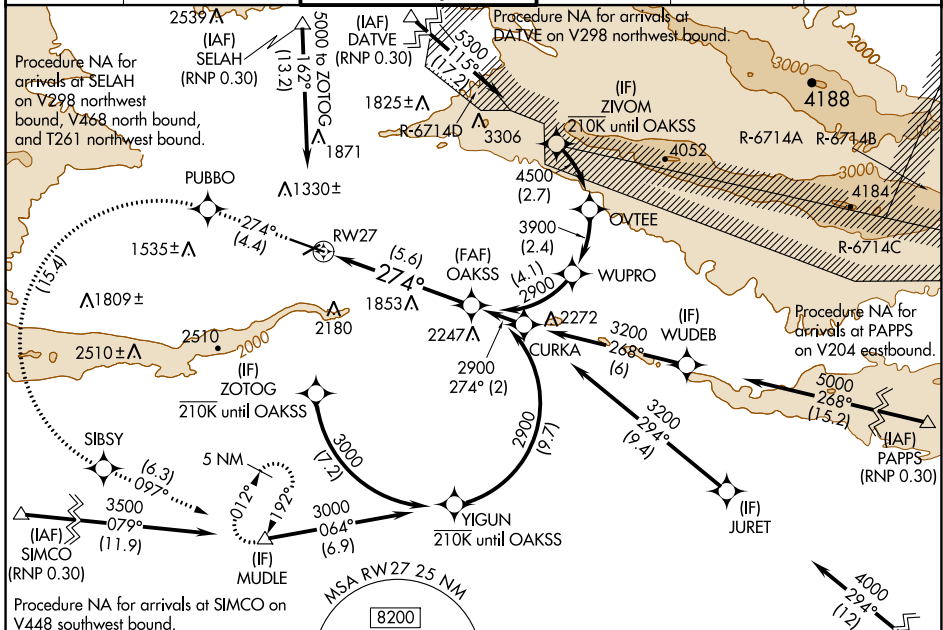
▼ For uncompensated Baro-VNAV systems, procedure NA below -15°C or above 54°C. DATVE transition NA when R-6714 A, C, D active. For inop ALS, increase RNP 0.30* all Cats visibility to RVR 5500 and RNP 0.30 all Cats to 2½ SM.

MALSRS 

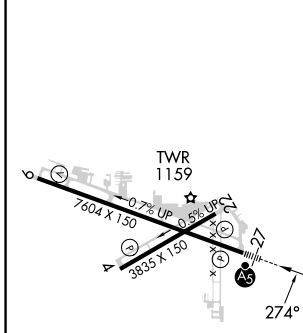
MISSED APPROACH: Climb to 5100 on track 274° to PUBBO left turn to SIBSY and on track 097° to MUDE and hold.




*Missed approach requires minimum climb of 425 feet per NM to 3400.

ATIS	SPOKANE APP CON*	YAKIMA TOWER*	GND CON	CLNC DEL	UNICOM
125.25	123.8 263.15	133.25 (CTAF) 0 257.8	121.9	121.9	122.95



ELEV 1099 **D** TDZE 1068



5100	PUBBO	SIBSY	MUDE	OAKSS
tr 274°			tr 097°	
See planview for multiple IF locations.				
RW27				274°
				2900
				GP 3.00°
				TCH 57
5.6 NM				

CATEGORY	A	B	C	D
RNP 0.30 DA*		1418/30	350 (400-5%)	
RNP 0.30 DA		1845-1¾	777 (800-1¾)	

AUTHORIZATION REQUIRED

MIRL Rwy 4-22
HIRL Rwy 9-27 **1**
REIL Rwy 4, 9, and 22

YAKIMA, WASHINGTON
Orig-D 23FEB23

YAKIMA AIR TRML/MCALLISTER FLD (YKM)
46°34'N-120°33'W **RNAV (RNP) Y RWY 27**

NW-1, 28 NOV 2024 to 26 DEC 2024

NW-1, 28 NOV 2024 to 26 DEC 2024