

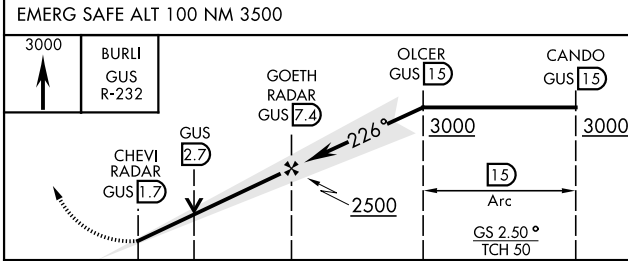
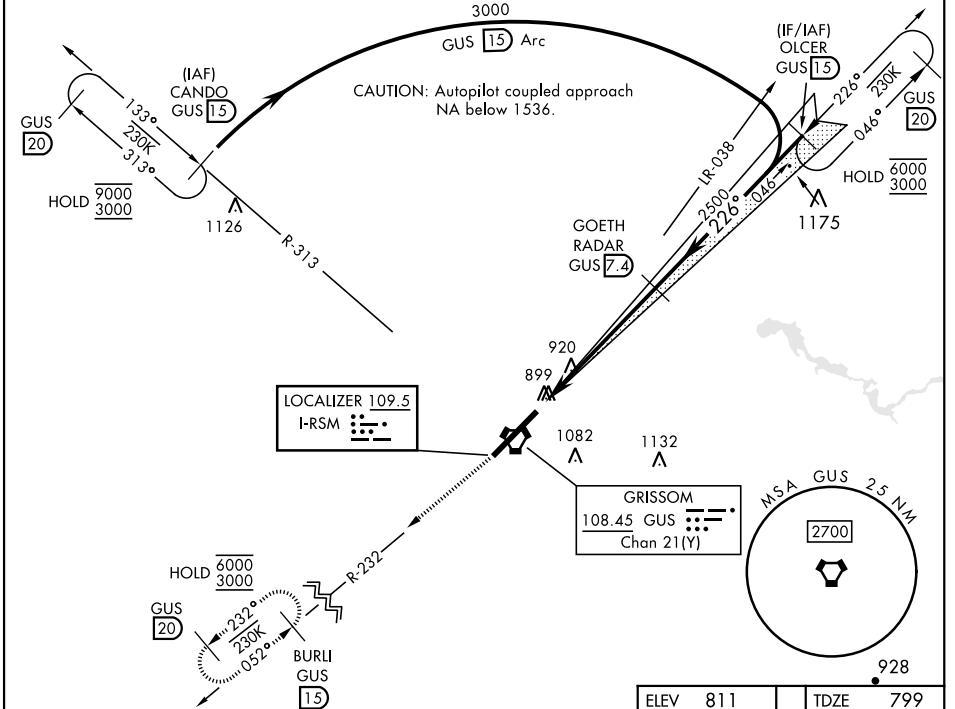
PERU, INDIANA

ILS or LOC RWY 23

LOC I-RSM 109.5	APCH CRS 226°	Rwy Idg TDZE Arprt Elev 12,501 799 811	[USAF]	GRISSOM ARB (KGUS)
---------------------------	-------------------------	--	--------	--------------------

RADAR, TACAN required.	ALSF-1 	MISSED APPROACH: Climb to 3000 on the GUS VORTAC R-232 to BURLI and hold. Missed approach requires use of RNAV or ATC RADAR monitoring.
*When ALS inop, increase RVR to 40 and vis to 3/4 mile.		
** When ALS inop, increase CAT AB RVR to 55 and vis to 1 mile, CAT CDE vis to 1 1/2 miles.		

ATIS 108.45 270.8	APP CON 121.05 351.8 (E) 123.85 291.675 (W)	TOWER★ 133.7 290.45	GND CON 128.425 275.8	CLNC DEL 128.425 275.8
-----------------------------	---	-------------------------------	---------------------------------	----------------------------------



ELEV 811	TDZE 799
HIRL Rwy 5-23	
FAF to MAP 5.7 NM	
Knots	60 90 120 150 180
Min:Sec	5:42 3:48 2:51 2:17 1:54

EC-2, 28 NOV 2024 to 26 DEC 2024

EC-2, 28 NOV 2024 to 26 DEC 2024

Amdt 7 14JUL22