

PERU, INDIANA

TACAN or VOR RWY 23

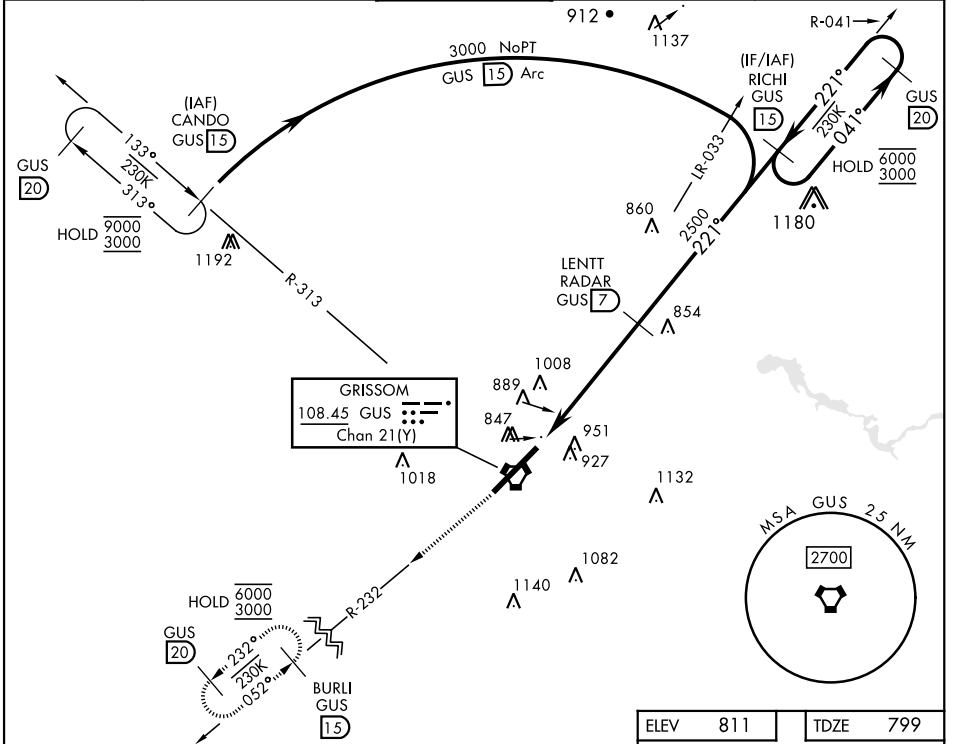
VORTAC GUS 108.45 Chan 21 (Y)	APCH CRS 221°	Rwy Idg TDZE Arprt Elev 12,501 799 811
---	-------------------------	--

[USAF]

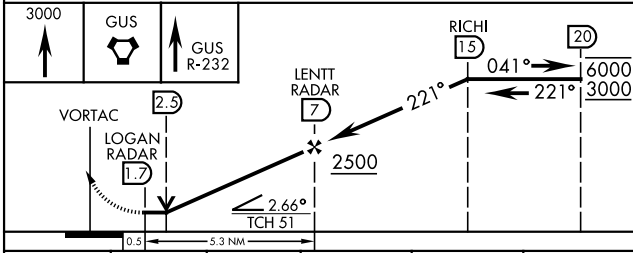
GRISSOM ARB (KGUS)

RADAR, DME required	ALSIF-1 	MISSED APPROACH: Climb to 3000 on the GUS VORTAC, R-232 to BURLI and hold. Missed approach requires use of RNAV or ATC RADAR monitoring.
---------------------	-------------	--

ATIS 108.45 270.8	APP CON 121.05 351.8 (E) 123.85 291.675 (W)	TOWER★ 133.7 290.45	GND CON 128.425 275.8	CLNC DEL 128.425 275.8
-----------------------------	---	-------------------------------	---------------------------------	----------------------------------



EMERG SAFE ALT 100 NM 3500



ELEV	811	TDZE	799		
		HIRL RWY 5-23 FAF to MAP 5.3 NM			
CATEGORY S-23* CIRCLING	A	B	C	D	E
	1260/24 461 (500-½)		1260/50 461 (500-1)		
KNOTS Min:Sec	60	90	120	150	180
	5:18	3:32	2:39	2:07	1:46

PERU, INDIANA
Amdt 7 11AUG22

40°39'N-86°09'W

GRISSOM ARB (KGUS)

TACAN or VOR RWY 23

EC-2, 28 NOV 2024 to 26 DEC 2024

EC-2, 28 NOV 2024 to 26 DEC 2024