

CHERRY POINT, NORTH CAROLINA

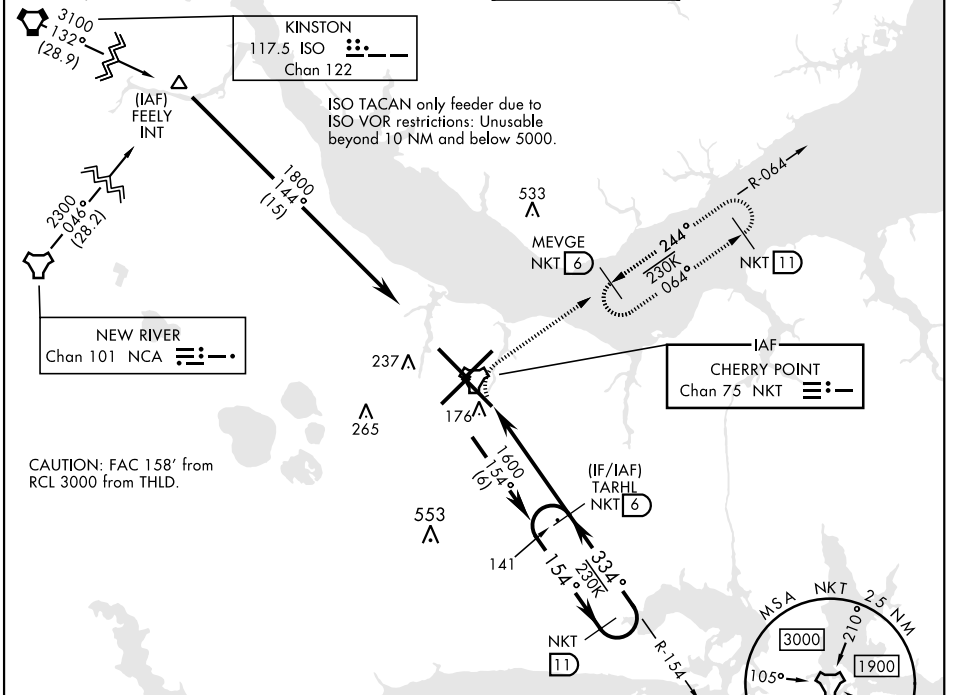
# TACAN Z RWY 32L

TACAN NKT Chan 75	APCH CRS 334°	Rwy Idg 7551 TDZE 26 Arprt Elev 29
----------------------	------------------	---------------------------------------------------

[USN] CHERRY POINT MCAS (CUNNINGHAM FLD) (KNKT)

▼ \* When ALS inop, increase vis CAT AB to 1 mile, CAT CD to 1 3/8 miles.
 ALS-F-1  
(A1)
MISSED APPROACH: Climbing right turn to 1600 and intercept NKT R-064 to MEVGE and hold.

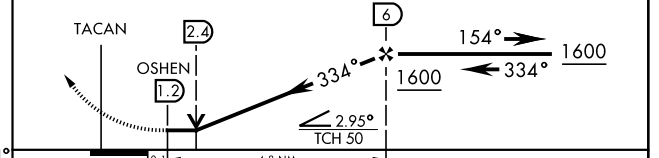
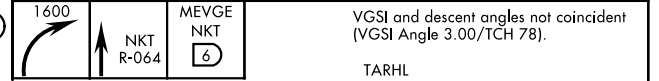
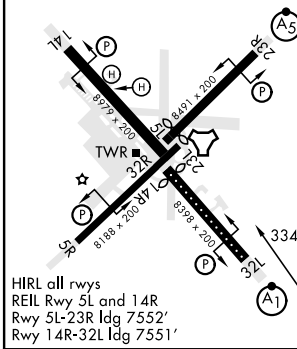
ATIS 127.475 244.875	(E) 119.75 (E) 132.575 (W) 119.35	APP CON 360.775 (abv 2600') 299.6 (at/blw 2600') 377.175 (N) 124.1 268.7	TOWER 121.3 340.2	GND CON 128.625 239.025	CLNC DEL 125.95 316.125	ASR/PAR
----------------------------	-----------------------------------------	-----------------------------------------------------------------------------------	----------------------	-------------------------------	-------------------------------	---------



EMERG SAFE ALT 100 NM 4100

ELEV 29	TDZE 26
---------	---------

Rwy 32R, 23L, 14R, 5L marked in center mat area.



CATEGORY	A	B	C	D
S-32L *	460-1/2	435 (500-1/2)	460-3/4 435 (500-3/4)	
<span>Ⓢ</span> CIRCLING	580-1	551 (600-1)	580-1 1/2 551 (600-1 1/2)	580-2 551 (600-2)

CHERRY POINT, NORTH CAROLINA 34° 54' N-76° 53' W CHERRY POINT MCAS (CUNNINGHAM FLD) (KNKT)

Amdt 6 02NOV23

# TACAN Z RWY 32L

SE-2, 28 NOV 2024 TO 26 DEC 2024

SE-2, 28 NOV 2024 TO 26 DEC 2024