

# RNAV (GPS) RWY 30

|  |                         |  |
|--|-------------------------|--|
| WAAS<br>CH <b>70955</b><br><b>W30A</b> | APCH CRS<br><b>304°</b> | Rwy ldg<br>TDZE<br>Arprt Elev<br><b>6825</b><br><b>-42</b><br><b>-42</b> |
|--|-------------------------|--|

[USN]

EL CENTRO NAF (VRACIU FLD) (KNJK)

RNP APCH  
 ▼ \*NA at night.  
 Visibility reduction by helicopters NA.

MISSED APPROACH: Climb to 500, then climbing left turn to 2300 direct BEENY and hold.

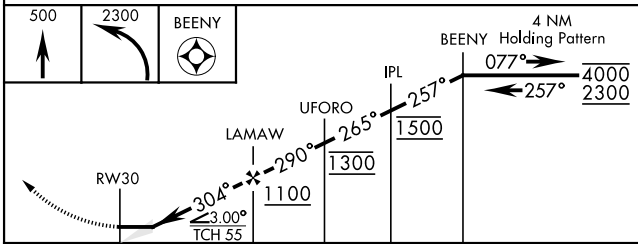
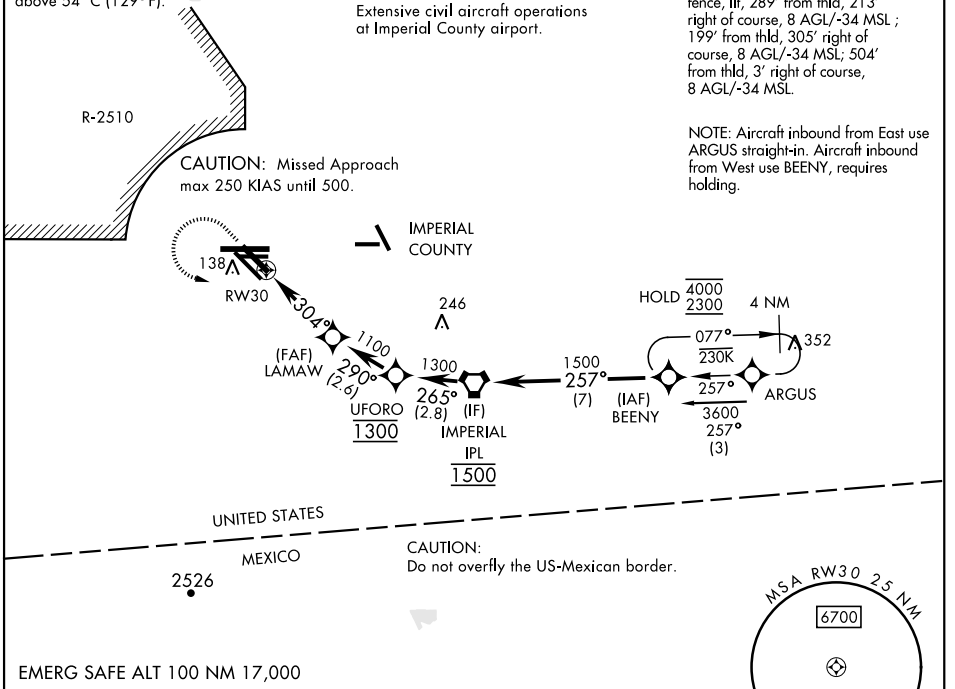
|                          |  |                               |                                |                          |
|--------------------------|--|-------------------------------|--------------------------------|--------------------------|
| ATIS ★<br><b>269.275</b> | APP CON/DEP CON<br><b>128.55 292.2</b> | TOWER ★<br><b>119.1 360.2</b> | GND CON<br><b>121.9 254.35</b> | CLNC DEL<br><b>340.2</b> |
|--------------------------|--|-------------------------------|--------------------------------|--------------------------|

For uncompensated Baro-VNAV system  
 LNAV/VNAV NA below -14° C (7°F) or  
 above 54° C (129°F).

CAUTION:  
 Extensive civil aircraft operations  
 at Imperial County airport.

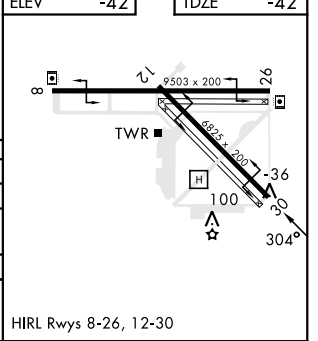
20:1 visual area penetrated by  
 fence, lit, 289' from thld, 213'  
 right of course, 8 AGL/-34 MSL;  
 199' from thld, 305' right of  
 course, 8 AGL/-34 MSL; 504'  
 from thld, 3' right of course,  
 8 AGL/-34 MSL.

NOTE: Aircraft inbound from East use  
 ARGUS straight-in. Aircraft inbound  
 from West use BEENY, requires  
 holding.



|          |          |
|----------|----------|
| ELEV -42 | TDZE -42 |
|----------|----------|

| CATEGORY      | A                    | B                    | C                    | D                    |
|---------------|----------------------|----------------------|----------------------|----------------------|
| LPV DA*       | 208-1                |                      | 250                  | (300-1)              |
| LNAV/VNAV DA* | 231-1<br>273 (300-1) | 242-1<br>284 (300-1) | 250-1<br>292 (300-1) | 261-1<br>303 (400-1) |
| LNAV MDA*     | 360-1                | 402 (500-1)          | 360-1½               | 402 (500-1½)         |
| CIRCLING      | 480-1                | 522 (600-1)          | 480-1½               | 520-2<br>522 (600-½) |



# RNAV (GPS) RWY 30

SW-3, 28 NOV 2024 to 26 DEC 2024

SW-3, 28 NOV 2024 to 26 DEC 2024