

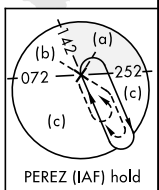
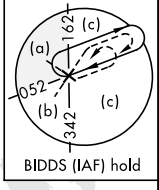
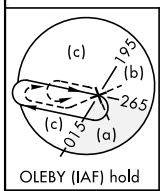
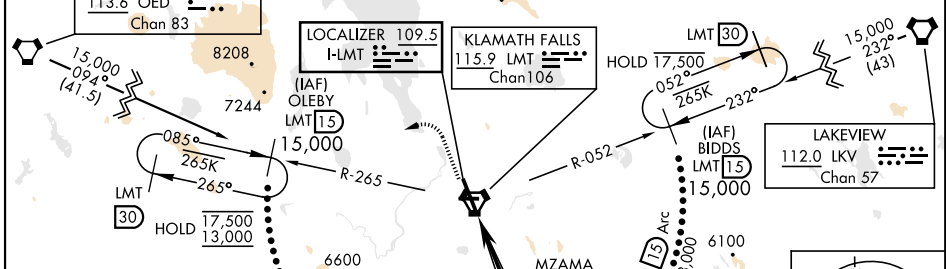
# HI-ILS Z or LOC Z RWY 32

LOC I-LMT <b>109.5</b>	APCH CRS <b>324°</b>	Rwy Ildg <b>10,302</b> TDZE <b>4095</b> Arprt Elev <b>4095</b>	[USAF]	CRATER LAKE/KLAMATH RGNL (KLMT)
---------------------------	-------------------------	---	--------	---------------------------------

DME required	MALSR	MISSED APPROACH: Climb to 6000 then climbing left turn to 13,000 on hdg 233° and on LMT VORTAC R-265 to OLEBY/LMT 15 DME and hold. Cont climb-in-hold to 13,000.
--------------	-------	--

ATIS <b>126.5 263.0</b>	KINGSLEY APP CON <b>123.675 270.8</b>	KINGSLEY TOWER ★ <b>133.975 (CTAF) 0 257.8</b>	GND CON <b>121.9 348.6</b>	UNICOM <b>122.95</b>
----------------------------	--	---	-------------------------------	-------------------------

9423	Simultaneous reception of I-LMT and LMT DME required.	7260	Min climb of 413 ft/NM to 12,200 - Controlling Obstacle 8208'
------	---	------	---

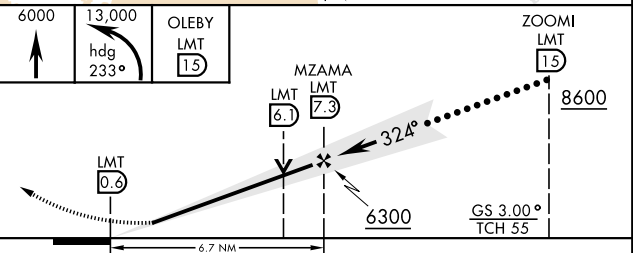
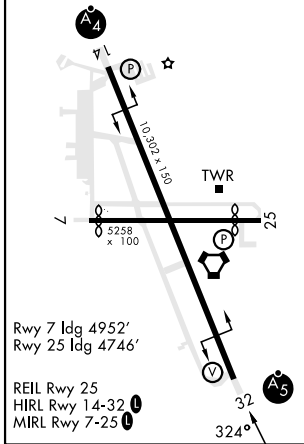
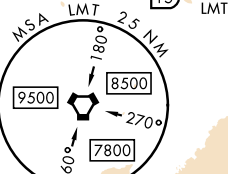


When local altimeter not received, procedure not authorized.

**NOT FOR CIVIL USE**

EMERG SAFE ALT 100 NM 16,400

ELEV	4095	D	TDZE	4095
------	------	---	------	------



CATEGORY	C	D	E
S-ILS 32*	4369/24	274	(300-½)
S-LOC 32	5940-3	1845	(1900-3)
CIRCLING **	5940-3	1845	(1900-3)

# HI-ILS Z or LOC Z RWY 32

NW-1, 28 NOV 2024 to 26 DEC 2024

NW-1, 28 NOV 2024 to 26 DEC 2024