

KLAMATH FALLS, OREGON

HI-TACAN RWY 32

VORTAC LMT 115.9 Chan 106	APCH CRS 328°	Rwy ldg 10,302 TDZE 4095 Arprt Elev 4095
---	-------------------------	--

[USAF]

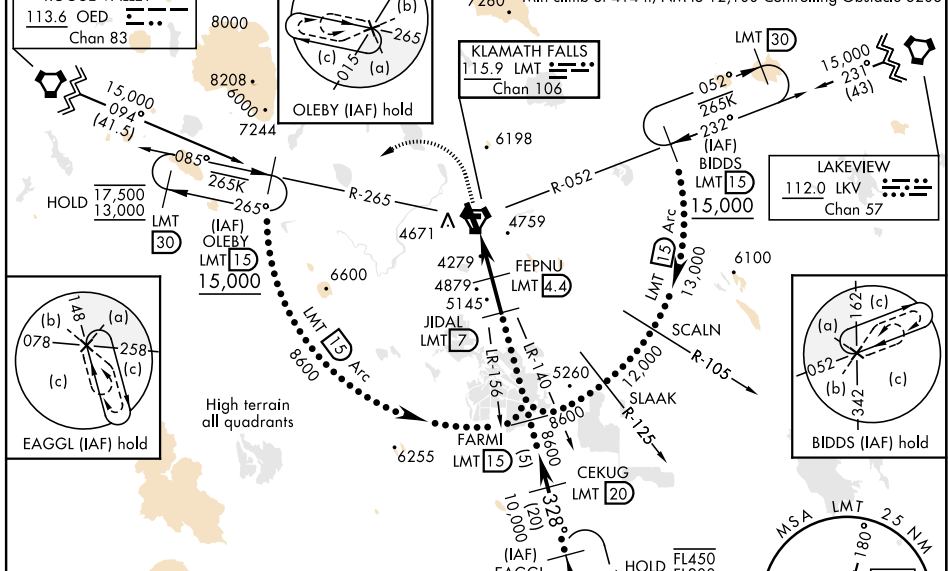
CRATER LAKE/KLAMATH RGNL (KLMT)

DME required	MALSR	MISSED APPROACH: Climb to 5500 then climbing left turn to 13,000 on heading 230° and LMT VORTAC R-265 to OLEBY/LMT 15 DME and hold. Continue climb in hold to 13,000.
<p>▼ *When ALS inop, increase vis 1 3/8 miles.</p> <p>** Circling not authorized for CAT DE E of Rwy 14-32.</p>		

ATIS 126.5 263.0	KINGSLEY APP CON 123.675 270.8	KINGSLEY TOWER ★ 133.975 (CTAF) 0 257.8	GND CON 121.9 348.6	UNICOM 122.95
----------------------------	--	---	-------------------------------	-------------------------

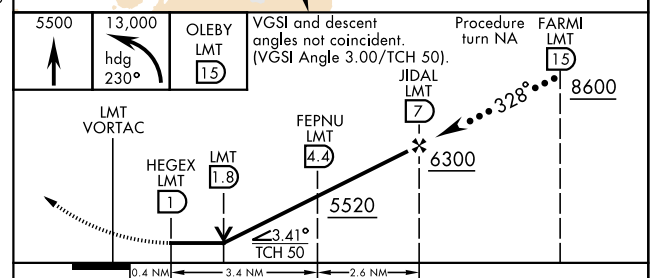
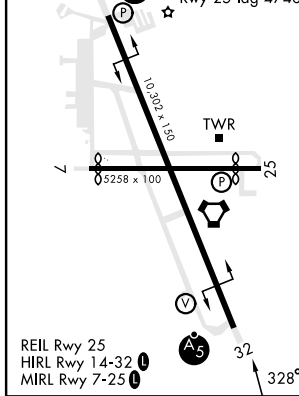
9423	Knobs	60	120	180	240	300	360
ROGUE VALLEY 113.6 OED Chan 83	V/V(fpm)	414	828	1242	1656	2070	2484

Min climb of 414 ft/NM to 12,100 Controlling Obstacle 8208



NOT FOR CIVIL USE
EMERG SAFE ALT 100 NM 16,400

ELEV 4095	TDZE 4095
-----------	-----------



CATEGORY	C	D	E
S-32*	4540/45	445	(500-7%)
CIRCLING**	5420-3 1325 (1400-3)	5660-3 1565 (1600-3)	5700-3 1605 (1700-3)

KLAMATH FALLS, OREGON

42° 09'N-121° 44'W

CRATER LAKE/KLAMATH RGNL (KLMT)

Amdt 5 25APR19

HI-TACAN RWY 32

NW-1, 28 NOV 2024 to 26 DEC 2024

NW-1, 28 NOV 2024 to 26 DEC 2024