

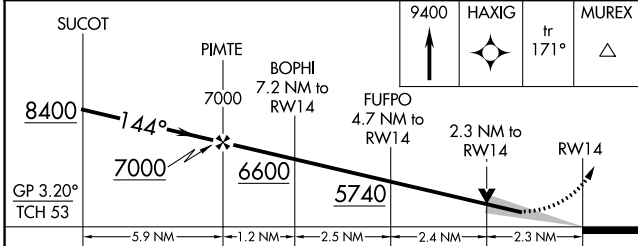
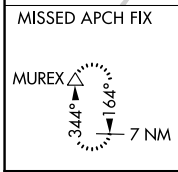
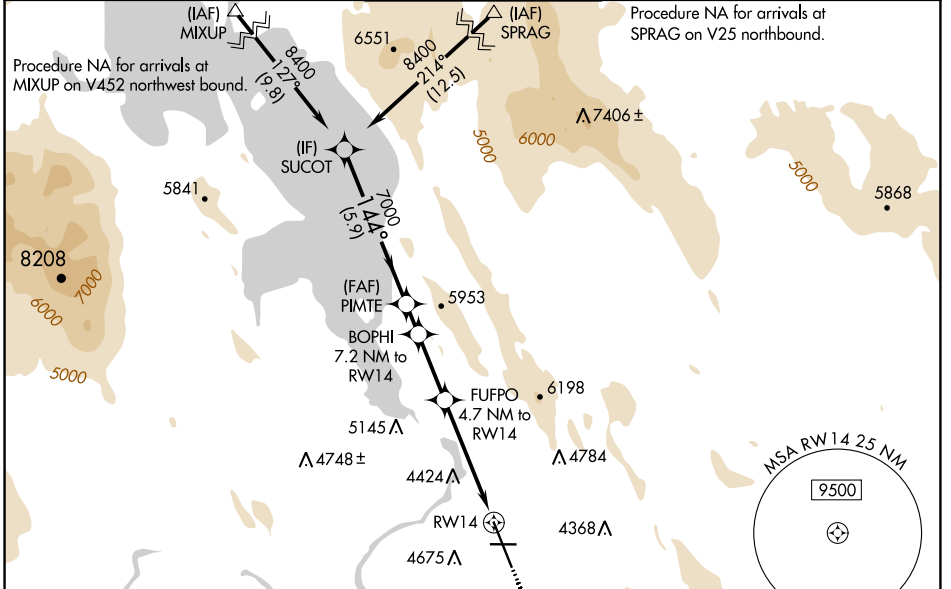
WAAS CH 58001 W14A	APP CRS 144°	Rwy Idg TDZE Apt Elev	10302 4091 4095
---------------------------------	------------------------	-----------------------------	--

RNAV (GPS) RWY 14

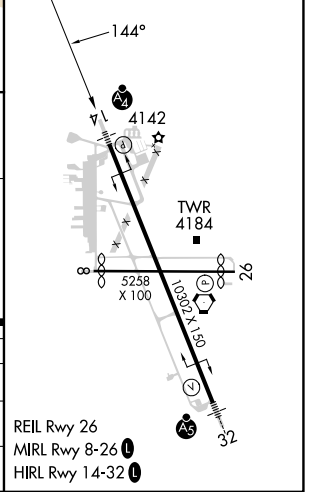
CRATER LAKE/KLAMATH RGNL (LMT)

RNP APCH - GPS.	MALSF	MISSED APPROACH: Climb to 9400 direct HAXIG and track 171° to MUREX and hold, continue climb-in-hold to 9400.
▼ For inop ALS, increase LNAV Cats C and D visibility to 2½ SM.	⚠	⚠ Circling NA for Cat D northeast of Rwy 14-32.

ATIS 126.5 263.0	KINGSLEY APP CON* 123.675 270.8	KINGSLEY TOWER* 133.975 (CTAF) 257.8	GND CON 121.9 348.6	UNICOM 122.95
----------------------------	---	--	-------------------------------	-------------------------



ELEV 4095	D	TDZE 4091
-----------	---	-----------



CATEGORY	A	B	C	D
LPV DA	4650-1⅓ 559 (600-1⅓)			
LNAV MDA	4920-¾ 829 (900-¾)	4920-1 829 (900-1)	4920-2	829 (900-2)
CIRCLING	4920-1¼ 825 (900-1¼)	4980-1¼ 885 (900-1¼)	5420-3 1325 (1400-3)	5680-3 1585 (1600-3)

NW-1, 28 NOV 2024 to 26 DEC 2024

NW-1, 28 NOV 2024 to 26 DEC 2024