

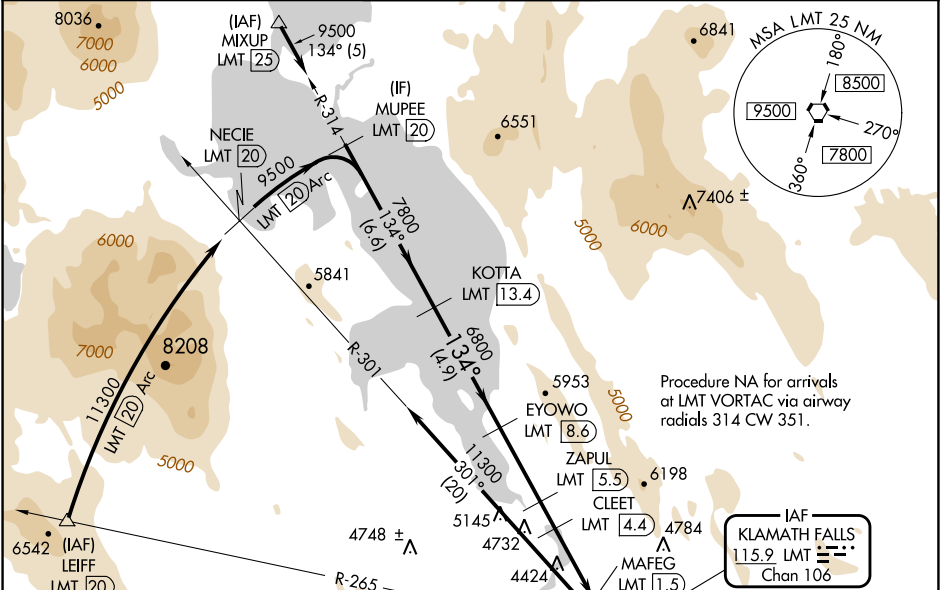
VORTAC LMT 115.9 Chan 106	APP CRS 134°	Rwy ldg 10302 TDZE 4091 Apt Elev 4095
---	------------------------	--

VOR/DME or TACAN RWY 14

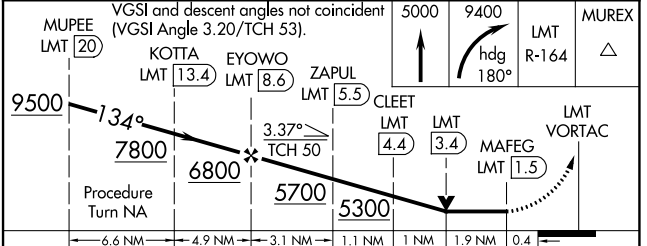
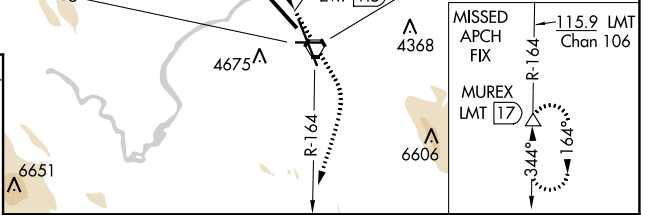
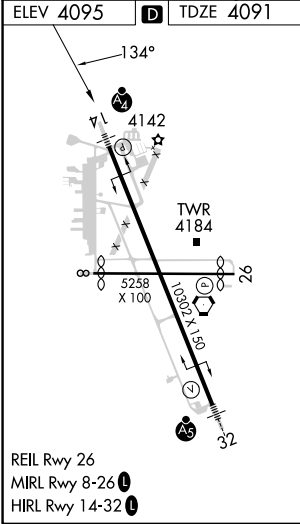
CRATER LAKE/KLAMATH RGNL (LMT)

⚠ Circling NA for Cat D and E east of Rwy 14-32. Inop table does not apply to Cats B and C. Helicopter visibility reduction below 3/4 SM NA.	MALSF 	MISSED APPROACH: Climb to 5000 then climbing right turn to 9400 via heading 180° and LMT VORTAC R-164 to MUREX/ LMT 17 DME and hold, continue climb-in-hold to 9400.
---	-----------	--

ATIS 126.5 263.0	KINGSLEY APP CON* 123.675 270.8	KINGSLEY TOWER* 133.975 (CTAF) 257.8	GND CON 121.9 348.6	UNICOM 122.95
----------------------------	---	--	-------------------------------	-------------------------



ELEV 4095	D	TDZE 4091
-----------	----------	-----------



CATEGORY	A	B	C	D	E
S-14	4860-3/4 769 (800-3/4)	4860-1 1/4 769 (800-1 1/4)	4860-2 1/4 769 (800-2 1/4)	4860-2 1/2 769 (800-2 1/2)	4860-2 3/4 769 (800-2 3/4)
C CIRCLING	4880-1 785 (800-1)	4980-1 1/4 885 (900-1 1/4)	5420-3 1325 (1400-3)	5660-3 1565 (1600-3)	5700-3 1605 (1700-3)

VOR/DME or TACAN RWY 14

NW-1, 28 NOV 2024 to 26 DEC 2024

NW-1, 28 NOV 2024 to 26 DEC 2024