

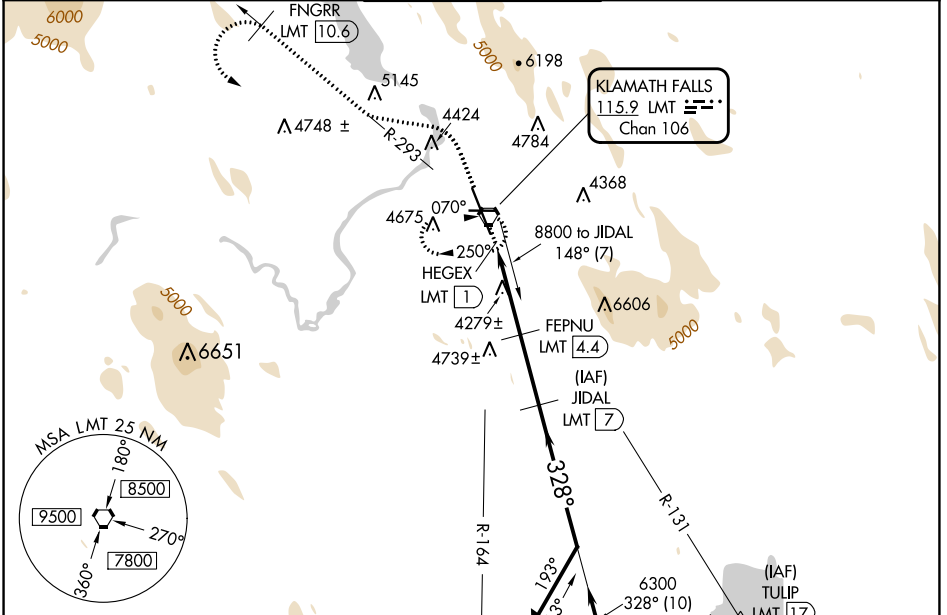
VORTAC LMT 115.9 Chan 106	APP CRS 328°	Rwy Idg 10302 TDZE 4095 Apt Elev 4095
---	------------------------	--

VOR/DME or TACAN RWY 32

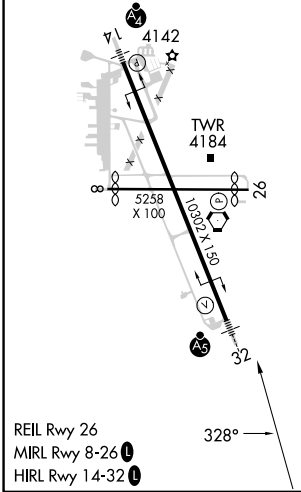
CRATER LAKE/KLAMATH RGNL (LMT)

<p>⚠ For inop MALS, increase S-32 Cat E visibility to 1¼ mile. Circling NA for Cat D and E east of Rwy 14-32. Procedure turn NA for Cat E aircraft.</p>	<p>MALS</p>	<p>MISSED APPROACH: Climb to 5100 then climbing left turn to 10000 via heading 263° and via LMT VORTAC R-293 to FNGRR/LMT 10.6 DME then left turn direct LMT VORTAC and hold. (TACAN aircraft climb to 5000 then climbing left turn to 9000 via heading 230° and LMT VORTAC R-265 to OLEBY/15 DME.)</p>
--	-------------	---

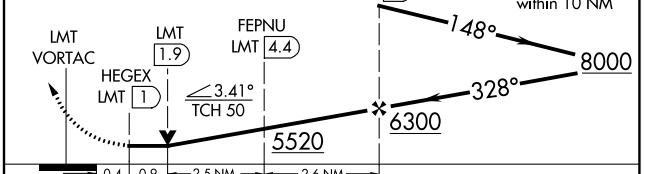
<p>ATIS 126.5 263.0</p>	<p>KINGSLEY APP CON * 123.675 270.8</p>	<p>KINGSLEY TOWER * 133.975 (CTAF) 257.8</p>	<p>GND CON 121.9 348.6</p>	<p>UNICOM 122.95</p>
------------------------------------	--	---	---------------------------------------	---------------------------------



ELEV 4095	D	TDZE 4095
------------------	----------	------------------



5100	10000	LMT R-293	FNGRR LMT 10.6	LMT	VGSI and descent angles not coincident (VGSI Angle 3.00/TCH 55).
↑	hdg 263°	↖	↖	⬠	



CATEGORY	A	B	C	D	E
S-32	4560/24	465 (500-½)	4560/40 465 (500-¾)	4560/50 465 (500-1)	4560/60 465 (500-1¼)
C CIRCLING	4840-1	4980-1¼	5420-3	5660-3	5700-3
	745 (800-1)	885 (900-1¼)	1325 (1400-3)	1565 (1600-3)	1605 (1700-3)

NW-1, 28 NOV 2024 to 26 DEC 2024

NW-1, 28 NOV 2024 to 26 DEC 2024