

| | | | |
|--|------------------------|-----------------------------|---|
| WAAS CH 40303 W21A | APP CRS 211° | Rwy Idg TDZE Apt Elev | 7110 404 410 |
|--|------------------------|-----------------------------|---|

RNAV (GPS) Y RWY 21R

TRI-CITIES (PSC)

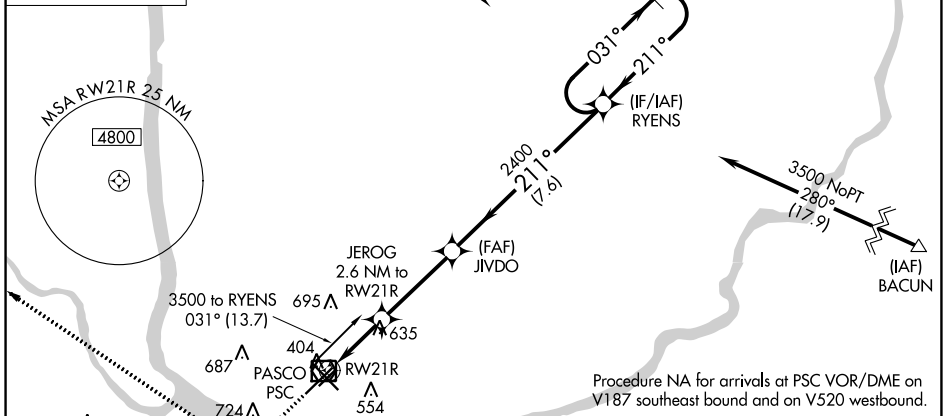
⚠ Baro-VNAV NA when using Hermiston altimeter setting. For uncompensated Baro-VNAV systems, LNAV/VNAV NA below -1.4°C (7°F) or above 54°C (130°F).
⚠ DME/DME RNP-0.3 NA. VDP NA with Hermiston altimeter setting. When local altimeter setting not received, use Hermiston altimeter setting and increase all DA 95 feet and all MDA 100 feet; increase LNAV/VNAV all Cats visibility 3/8 mile; LNAV Cat C and D visibility 3/8 mile and Circling Cat C and D visibility 1/4 mile.
 # RVR 1800 authorized with use of FD or AP or HUD to DA, NA when using Hermiston altimeter setting.

MALSR

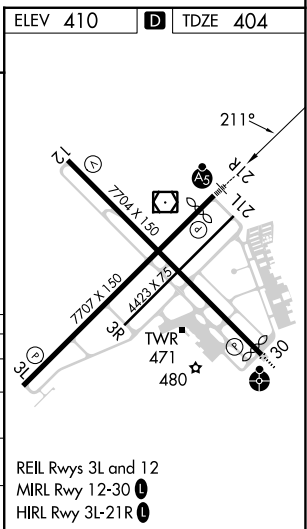
MISSED APPROACH:
 Climb to 1100 then climbing right turn to 5200 direct PAIDS and hold, continue climb-in-hold to 5200.

| | | | | | |
|-----------------------|---|--|-------------------------|--------------------------|-------------------------|
| ATIS 125.65 | SPOKANE APP CON* 128.75 377.2 | TRI-CITIES TOWER* 135.3 (CTAF) 323.3 | GND CON 121.8 | CLNC DEL 120.0 | UNICOM 122.95 |
|-----------------------|---|--|-------------------------|--------------------------|-------------------------|

MISSED APCH FIX



| | | | |
|--------------|--------|----------------------|---|
| ELEV 410 | | D TDZE 404 | |
| 1100 | | 5200 | |
| PAIDS | | RYENS | |
| *LNAV only | | 4 NM Holding Pattern | |
| RWY 21R | | 211° | |
| 1.5 NM | | 2400 | |
| 1.1 NM | | 211° | |
| 3.5 NM | | 031° | |
| 7.6 NM | | 3500 | |
| 1280* | | GP 3.00° | |
| TCH 55 | | | |
| CATEGORY | A | B | C |
| LPV DA# | | 604/24 | 200 (200-1/2) |
| LNAV/VNAV DA | | 844/51 | 440 (500-1) |
| LNAV MDA | 940/24 | 536 (600-1/2) | 940/55 536 (600-1) |
| CIRCLING | 940-1 | 530 (600-1) | 1040-1 3/4 630 (700-1 3/4) 1100-2 1/4 690 (700-2 1/4) |



NW-1, 28 NOV 2024 to 26 DEC 2024

NW-1, 28 NOV 2024 to 26 DEC 2024