

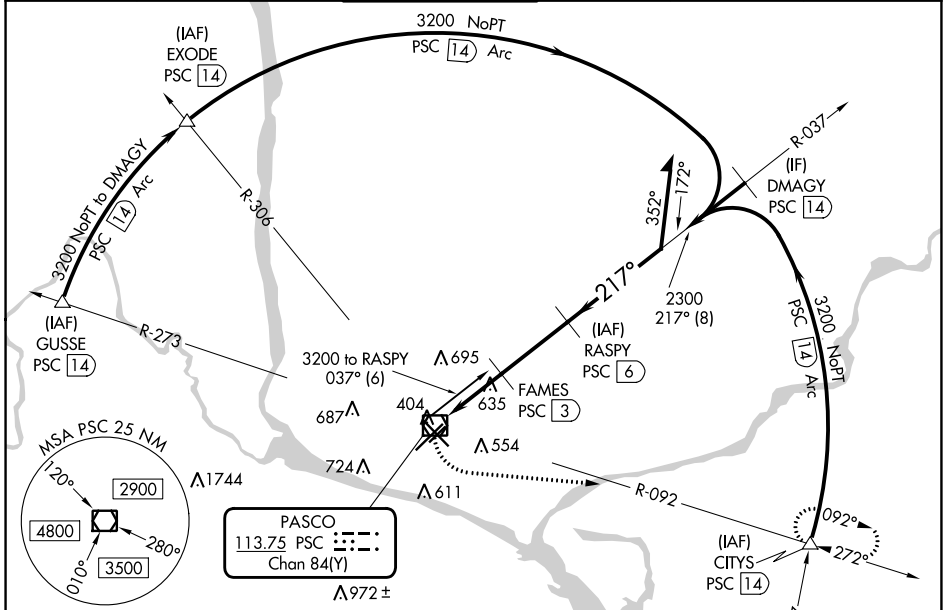
VOR/DME PSC <b>113.75</b> Chan <b>84(Y)</b>	APP CRS <b>217°</b>	Rwy Idg <b>7110</b> TDZE <b>404</b> Apt Elev <b>410</b>
---	------------------------	---

# VOR RWY 21R

TRI-CITIES (PSC)

DME required.		MALSR 	MISSED APPROACH: Climbing left turn to 3200 on heading 080° and PSC VOR/DME R-092 PSC VOR/DME to CITYS INT/PSC 14 DME and hold.
VDP NA when using Hermiston altimeter setting. When local altimeter setting not received, use Hermiston altimeter setting and increase all MDA 100 feet and increase S-21R Cat C/D visibility 3/8 SM and Circling Cat C/D visibility 1/4 SM. For inop ALS when using Hermiston altimeter setting, increase Cat C/D visibility to 1 3/4 SM.			

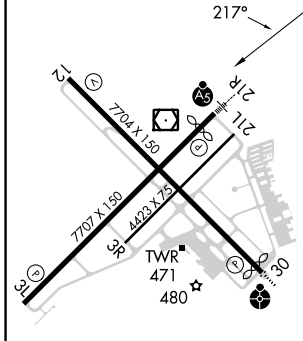
ATIS <b>125.65</b>	SPOKANE APP CON * <b>128.75 377.2</b>	TRI-CITIES TOWER * <b>135.3 (CTAF) 323.3</b>	GND CON <b>121.8</b>	CLNC DEL <b>120.0</b>	UNICOM <b>122.95</b>
-----------------------	--	---	-------------------------	--------------------------	-------------------------



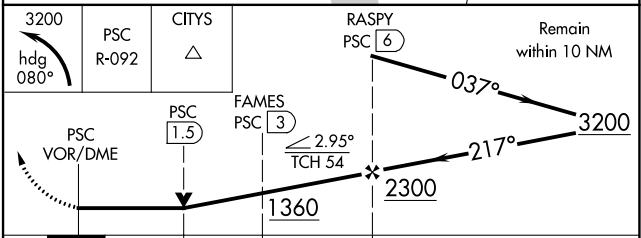
NW-1, 28 NOV 2024 to 26 DEC 2024

NW-1, 28 NOV 2024 to 26 DEC 2024

ELEV 410	<b>D</b>	TDZE 404
----------	----------	----------



3200	PSC R-092	CITYS	RASPY PSC 6	Remain within 10 NM
------	-----------	-------	-------------	---------------------



CATEGORY	A	B	C	D
S-21R	940/24	536 (600-1/2)	940/55	536 (600-1)
CIRCLING	940-1	530 (600-1)	1040-1 3/4 630 (700-1 3/4)	1100-2 1/4 690 (700-2 1/4)

PASCO, WASHINGTON  
Amdt 7A 05DEC19

46°16'N-119°07'W

# TRI-CITIES (PSC) VOR RWY 21R