

LOC I-DRO 109.1	APP CRS 027°	Rwy Idg TDZE Apt Elev	9201 6643 6689
---------------------------	------------------------	-----------------------------	---

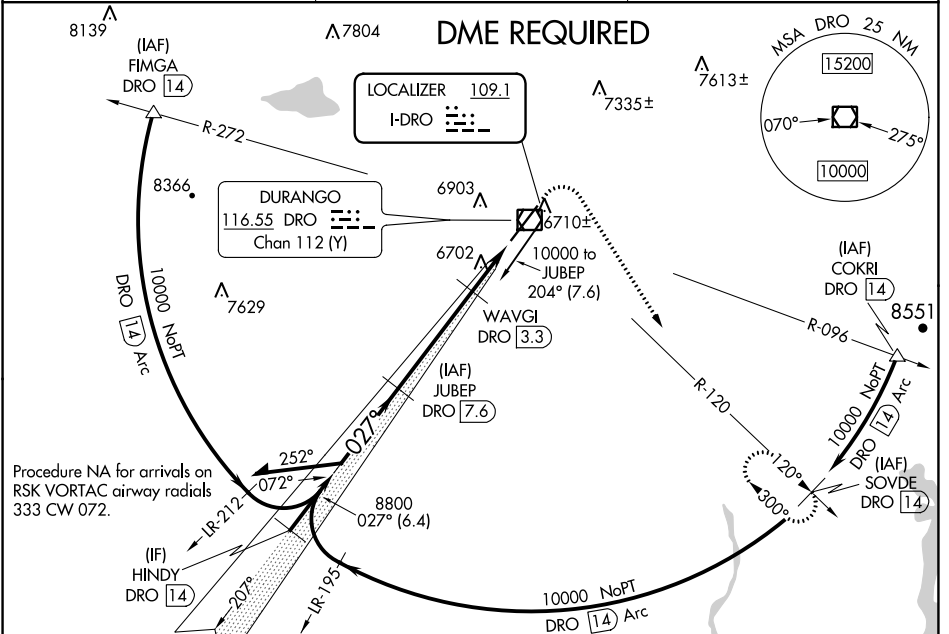
ILS or LOC/DME RWY 3

DURANGO-LA PLATA COUNTY (DRO)

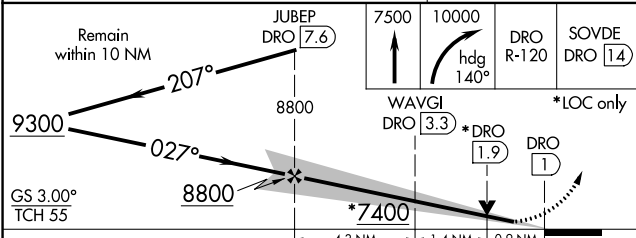
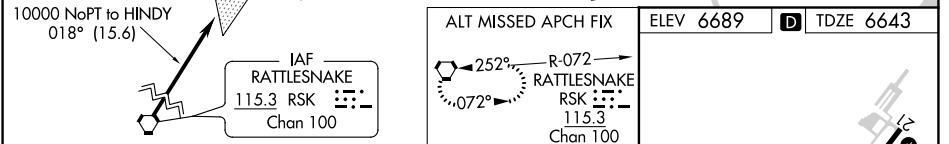
NA DME required. DME from DRO VOR/DME. Simultaneous reception of I-DRO and DRO VOR/DME required. For input MALSR, increase S-LOC 3 Cat C/D visibility to 7/8 mile.

MALSR MISSED APPROACH: Climb to 7500 then climbing right turn to 10000 on heading 140° and on DRO VOR/DME R-120 to SOVDE/DRO 14 DME and hold.

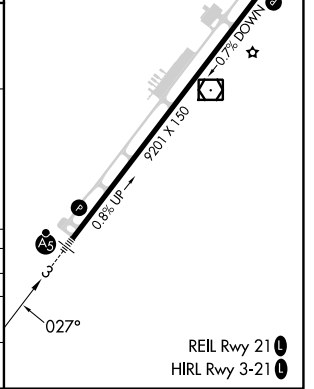
ASOS 120.625	DENVER CENTER 118.575 348.7	UNICOM 122.8 (CTAF)
------------------------	---------------------------------------	-------------------------------



Procedure NA for arrivals on RSK VORTAC airway radials 333 CW 072.



CATEGORY	A	B	C	D
S-ILS 3		6843-1/2	200 (200-1/2)	
S-LOC 3		6960-1/2	317 (300-1/2)	
C CIRCLING	7160-1 471 (500-1)	7220-1 531 (600-1)	7540-2 1/2 851 (900-2 1/2)	8140-3 1451 (1500-3)



SW-1, 28 NOV 2024 to 26 DEC 2024

SW-1, 28 NOV 2024 to 26 DEC 2024