

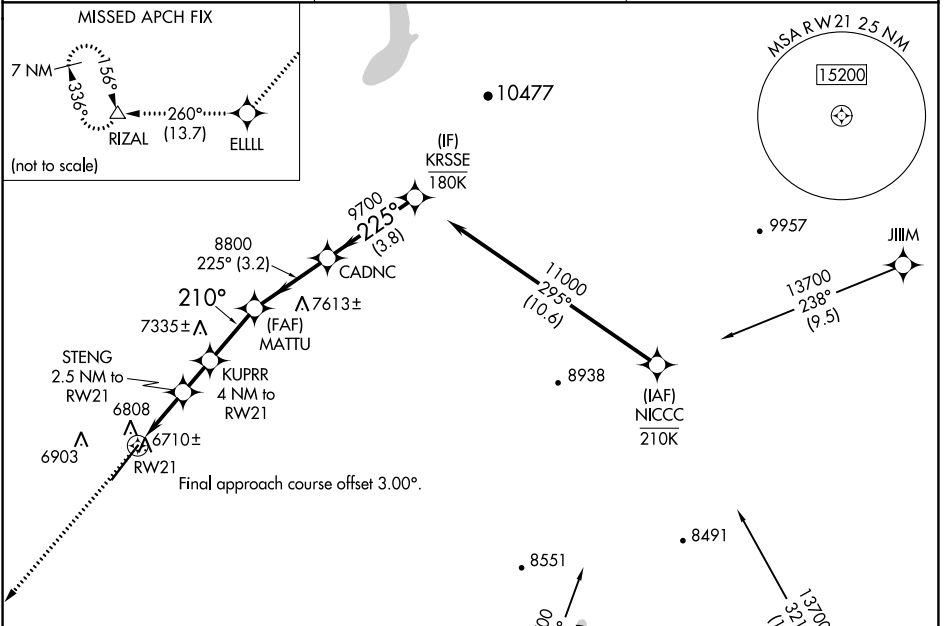
APP CRS 210°	Rwy Idg TDZE Apt Elev	9201 6689 6689
------------------------	-----------------------------	---

RNAV (GPS) RWY 21

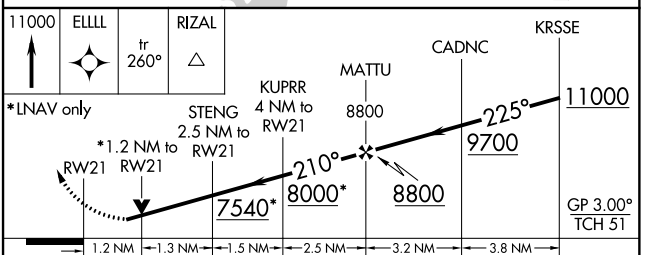
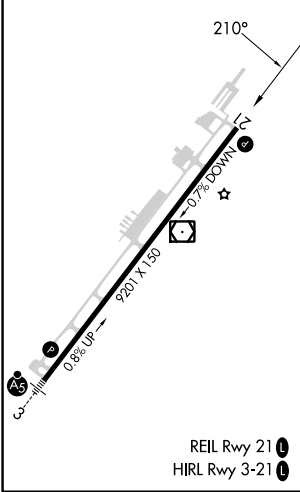
DURANGO-LA PLATA COUNTY (D.R.O)

RNP APCH.	MISSED APPROACH: Climb to 11000 direct ELLLL and on track 260° to RIZAL and hold.
Rwy 21 helicopter visibility reduction below 3/4 SM NA. For uncompensated Baro-VNAV systems, LNAV/VNAV NA below -20°C or above 54°C.	

ASOS 120.625	DENVER CENTER 118.575 348.7	UNICOM 122.8 (CTAF) 0
------------------------	---------------------------------------	---------------------------------



ELEV 6689	D	TDZE 6689
-----------	----------	-----------



CATEGORY	A	B	C	D
LNAV/VNAV DA	7019-1 330 (400-1)			
LNAV MDA	7120-1	431 (500-1)	7120-1 1/4	431 (500-1 1/4)
CIRCLING	7160-1 471 (500-1)	7220-1 531 (600-1)	7540-2 1/2 851 (900-2 1/2)	8140-3 1451 (1500-3)

SW-1, 28 NOV 2024 to 26 DEC 2024

SW-1, 28 NOV 2024 to 26 DEC 2024