

WAAS CH 53710 W03A	APP CRS 027°	Rwy Idg 9201 TDZE 6643 Apt Elev 6689
--	------------------------	---

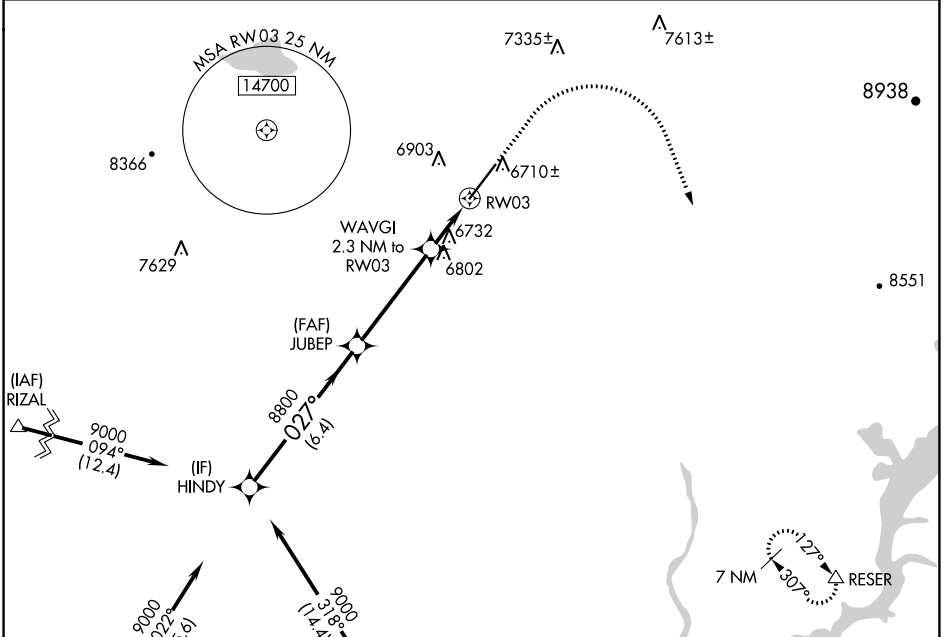
RNAV (GPS) RWY 3

DURANGO-LA PLATA COUNTY (D.R.O)

⚠ For uncompensated Baro-VNAV systems, LNAV/VNAV NA below -26°C (-14°F) or above 44°C (111°F). DME/DME RNP-0.3 NA. For inop MALS, increase LNAV Cat C/D visibility to 1 mile.

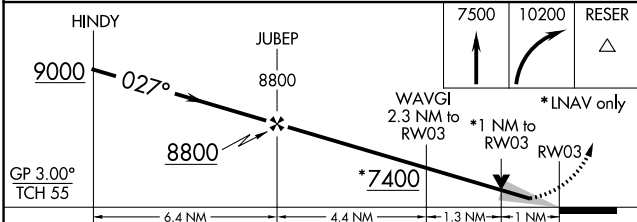
MALS MISSED APPROACH: Climb to 7500 then climbing right turn to 10200 direct RESER and hold.

ASOS 120.625	DENVER CENTER 118.575 348.7	UNICOM 122.8 (CTAF)
------------------------	---------------------------------------	-------------------------------

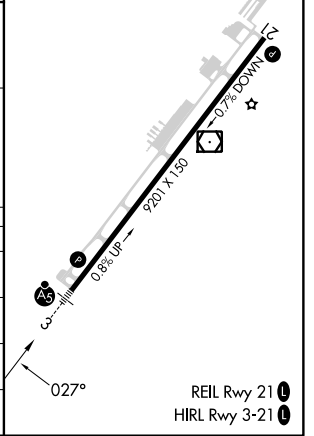


(IAF) RATTLESLAKE RSK → 9000 027° (15.6)
 (IF) HINDY → 8800 027° (6.4)
 (FAF) JUBEP → 8800 027° (6.4)
 WAVGI 2.3 NM to RW03 → 6732
 RW03 → 6710±
 (IAF) TURLY → 9000 027° (17.4)
 Procedure NA for arrivals on RSK VORTAC airway radials 316 CW 057.

ELEV 6689	D TDZE 6643
-----------	--------------------



CATEGORY	A	B	C	D
LPV DA		6843-½	200 (200-½)	
LNAV/VNAV DA		6918-½	275 (300-½)	
LNAV MDA	7000-½	357 (400-½)	7000-⅝	357 (400-⅝)
C CIRCLING	7160-1 471 (500-1)	7220-1 531 (600-1)	7540-2½ 851 (900-2½)	8140-3 1451 (1500-3)



REIL Rwy 21
HIRL Rwy 3-21

SW-1, 28 NOV 2024 to 26 DEC 2024

SW-1, 28 NOV 2024 to 26 DEC 2024