

WAAS CH 42629 W13A	APP CRS 128°	Rwy Idg TDZE Apt Elev	5997 178 178
--	------------------------	-----------------------------	---

RNAV (GPS) RWY 13

ALICE INTL (ALI)

RNP APCH.

⚠ Baro-VNAV NA when using Nueces County altimeter setting. For uncompensated Baro-VNAV systems, LNAV/VNAV NA below -3°C or above 42°C. When local altimeter setting not received, use Nueces County altimeter setting and increase all DA 56 feet and all MDA 60 feet, increase LPV and LNAV/VNAV visibility all Cats ¼ mile and LNAV Cat C and D ½ mile. Rwy 13 helicopter visibility reduction below ¾ SM NA. VDP NA with Nueces County altimeter setting.

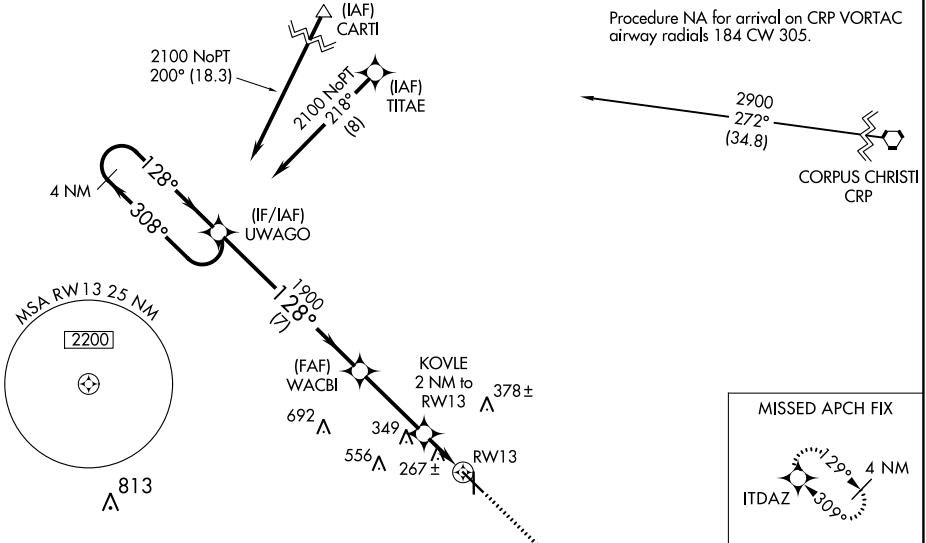
MISSED APPROACH: Climb to 2600 direct ITDAZ and hold.

ASOS
119.225

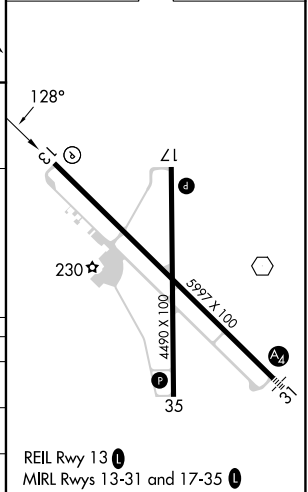
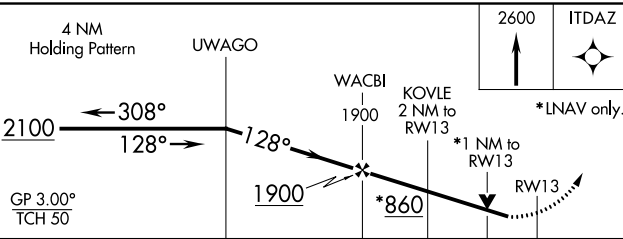
KINGSVILLE APP CON *
119.9 290.45

UNICOM
123.0 (CTAF) ①

Procedure NA for arrival on CRP VORTAC airway radials 184 CW 305.



ELEV 178	TDZE 178
----------	----------



CATEGORY	A	B	C	D
LPV DA		428-¾	250 (300-¾)	
LNAV/VNAV DA		428-¾	250 (300-¾)	
LNAV MDA	560-1	382 (400-1)	560-1½	382 (400-1½)

SC-3, 28 NOV 2024 to 26 DEC 2024

SC-3, 28 NOV 2024 to 26 DEC 2024