

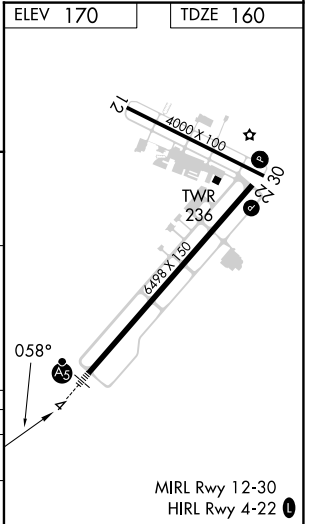
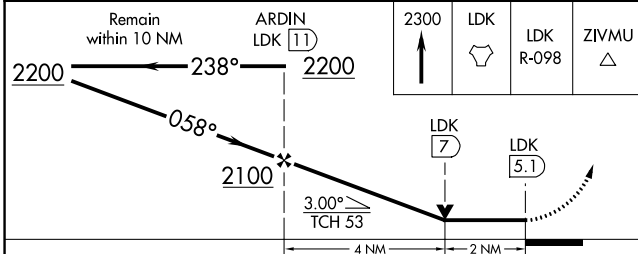
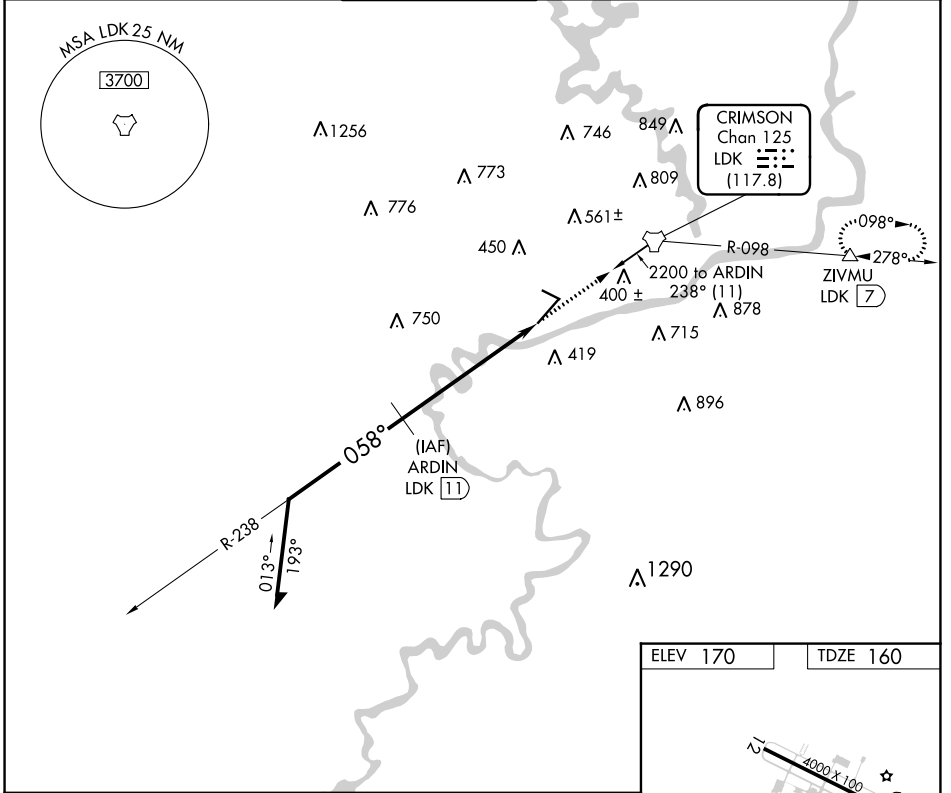
TACAN LDK Chan <b>125</b> (117.8)	APP CRS <b>058°</b>	Rwy ldg <b>6498</b> TDZE <b>160</b> Apt Elev <b>170</b>
---	------------------------	---

# TACAN RWY 4

TUSCALOOSA NTL (TCL)

	Circling Rwy 12, 30 NA at night. Inop table does not apply.		MISSED APPROACH: Climb to 2300 direct LDK TACAN and LDK TACAN R-098 to ZIVMU/LDK 7 DME and hold.

ASOS <b>132.825</b>	BIRMINGHAM APP CON <b>120.15 269.25</b>	TUSCALOOSA TOWER ★ <b>126.3</b> (CTAF) <b>0 256.7</b>	GND CON <b>121.8 257.95</b>	CLNC DEL <b>120.775</b>	UNICOM <b>122.95</b>
------------------------	--	--	--------------------------------	----------------------------	-------------------------



CATEGORY	A	B	C	D
S-4	840-1	680 (700-1)	840-1 $\frac{7}{8}$	680 (700-1 $\frac{7}{8}$ )
<b>C</b> CIRCLING	840-1	670 (700-1)	960-2 $\frac{1}{4}$ 790 (800-2 $\frac{1}{4}$ )	960-2 $\frac{1}{2}$ 790 (800-2 $\frac{1}{2}$ )

SE-4, 28 NOV 2024 to 26 DEC 2024

SE-4, 28 NOV 2024 to 26 DEC 2024

MIRL Rwy 12-30  
HIRL Rwy 4-22