

BESSA TWO DEPARTURE (RNAV) (BESSA2.BESSA)

TRAVIS AFB (KSUU)
FAIRFIELD, CALIFORNIA

| Rwy | Knots | 60 | 120 | 180 | 240 | 300 | 360 |
|-------------|----------|-----|-----|-----|------|------|------|
| *3R (C) | V/V(fpm) | 201 | 402 | 603 | 804 | 1005 | 1206 |
| † 3R (C) | V/V(fpm) | 295 | 590 | 885 | 1180 | 1475 | 1770 |
| † 3L (C) | V/V(fpm) | 299 | 598 | 897 | 1196 | 1495 | 1794 |
| *21L/RC (C) | V/V(fpm) | 220 | 440 | 660 | 880 | 1100 | 1320 |
| †21R (C) | V/V(fpm) | 277 | 554 | 831 | 1108 | 1385 | 1662 |
| † 21L (C) | V/V(fpm) | 280 | 560 | 840 | 1120 | 1400 | 1680 |

* Minimum † ATC Climb Rate

- (C) to 500
- (C) to BESSA to 8000
- (C) to 4000

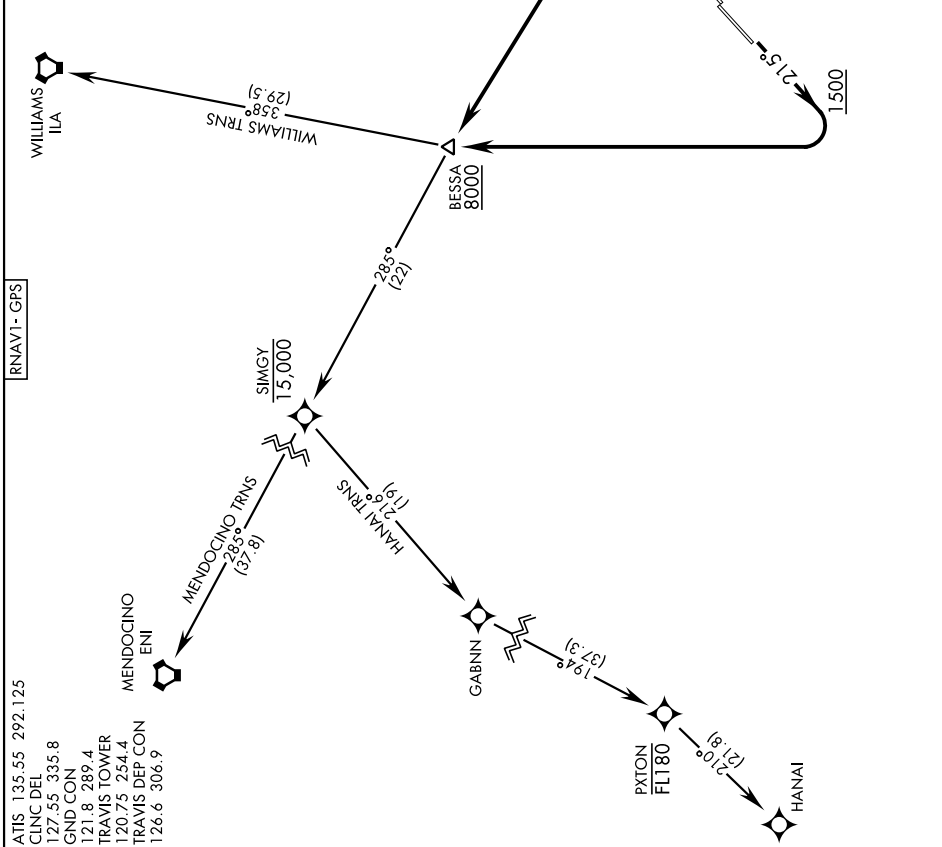
[USAF]

▼ DEPARTURE ROUTE DESCRIPTION

TAKEOFF RWY 3L/R: Climb on heading 035° to 1500, then left turn direct to cross BESSA at or above 8000. Thence...

TAKEOFF RWY 21L/R: Climb on heading 215° to 1500, then right turn direct to cross BESSA at or above 8000. Thence...
...via assigned transition. Maintain ATC assigned altitude.

HANAI TRANSITION (BESSA2.HANAI)
MENDOCINO TRANSITION (BESSA2.ENI)
WILLIAMS TRANSITION (BESSA2.ILA)



ATIS 135.55 292.125
CINC DEL 127.55 335.8
GND CON 121.8 289.4
TRAVIS TOWER 120.75 254.4
TRAVIS DEP CON 126.6 306.9

BESSA TWO DEPARTURE (RNAV) (BESSA2.BESSA)

Orig 11JUL24

FAIRFIELD, CALIFORNIA
TRAVIS AFB (KSUU)

SW-2, 28 NOV 2024 to 26 DEC 2024

RNAV-1/NAV

SW-2, 28 NOV 2024 to 26 DEC 2024