

# OSVEE TWO ARRIVAL (RNAV)

AL-488 (FAA)

TRAVIS AFB (KSUU)  
FAIRFIELD, CALIFORNIA

## ARRIVAL ROUTE DESCRIPTION

- LIBBO TRANSITION (LIBBO.OSVEE2)
- ROVUE TRANSITION (ROVUE.OSVEE2)
- ZONSO TRANSITION (ZONSO.OSVEE2)

From MOLEN on track 057° to OCOVA.

LANDING RUNWAYS 3L, 21L/R: From OCOVA on track 057° to cross OSVEE at 7000, then on heading 023°. Expect RADAR vectors to final approach course.

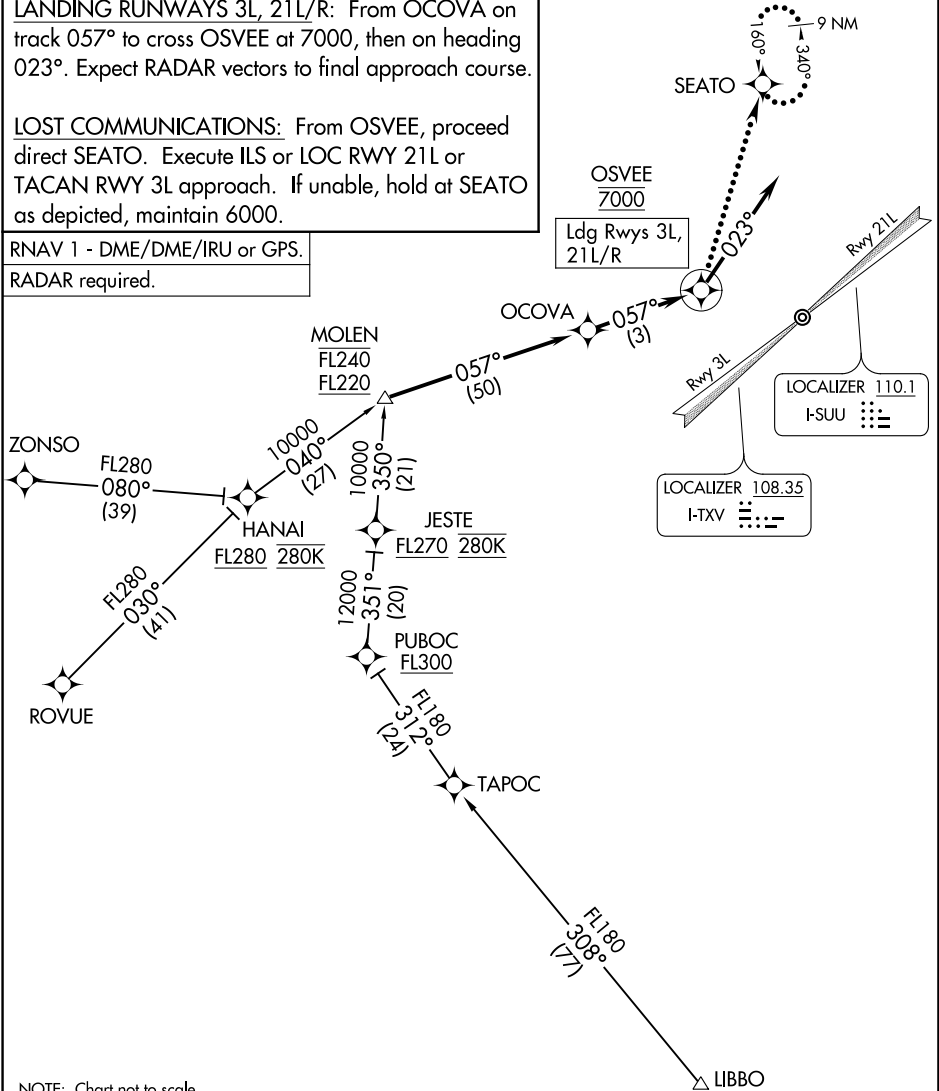
LOST COMMUNICATIONS: From OSVEE, proceed direct SEATO. Execute ILS or LOC RWY 21L or TACAN RWY 3L approach. If unable, hold at SEATO as depicted, maintain 6000.

RNAV 1 - DME/DME/IRU or GPS.

RADAR required.

TRAVIS APP CON  
126.6 281.45 (N)  
119.9 322.325 (S)  
TRAVIS TOWER  
120.75 254.4  
GND CON  
121.8 289.4  
D-ATIS  
135.55 292.125

SW-2, 28 NOV 2024 to 26 DEC 2024



SW-2, 28 NOV 2024 to 26 DEC 2024

NOTE: Chart not to scale.

# OSVEE TWO ARRIVAL (RNAV)

(OSVEE.OSVEE2) 19MAY22

FAIRFIELD, CALIFORNIA  
TRAVIS AFB (KSUU)