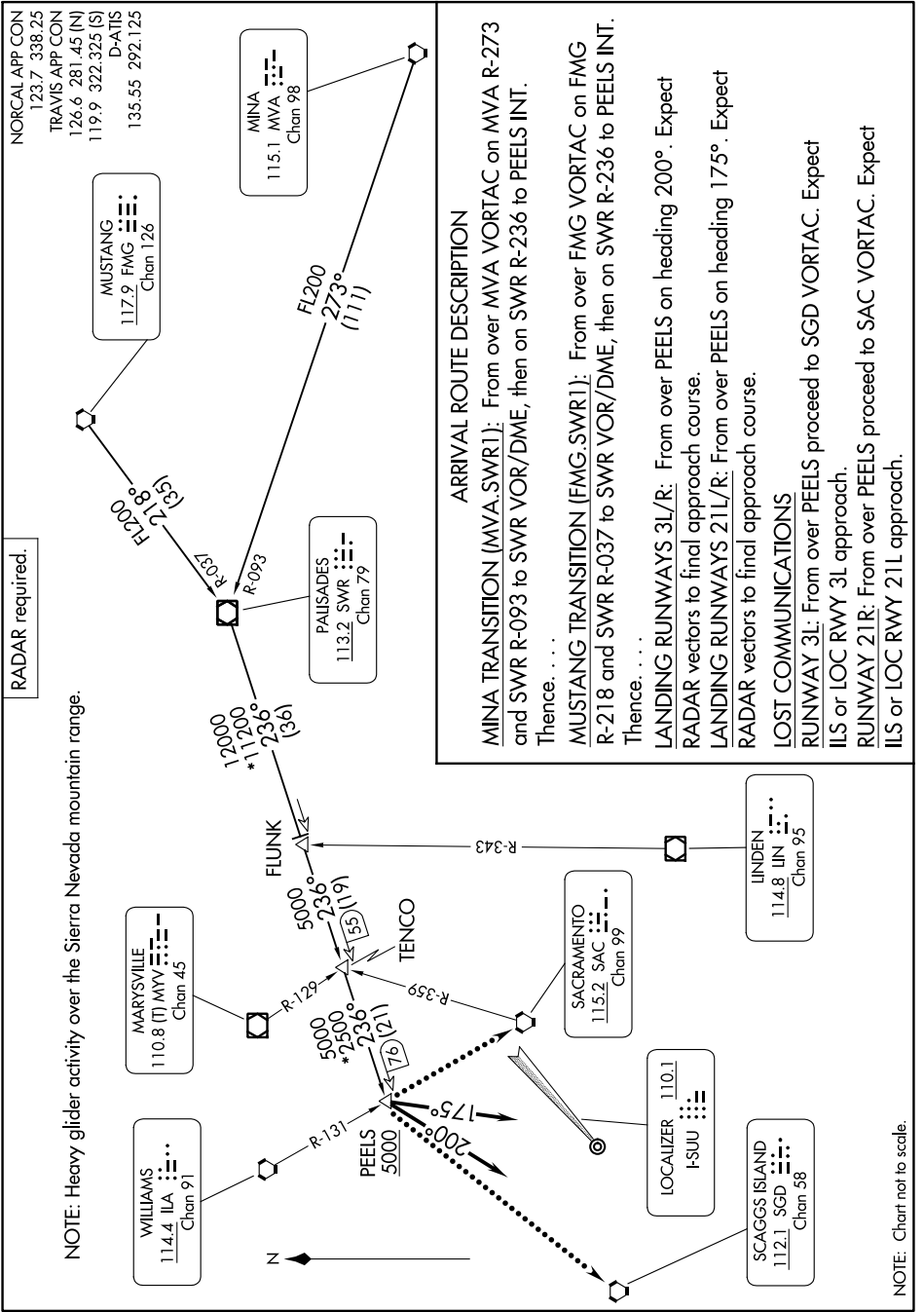


PALISADES ONE ARRIVAL

SW-2, 28 NOV 2024 to 26 DEC 2024



PALISADES ONE ARRIVAL

(SWR.SWR1) 10AUG23

ARRIVAL ROUTE DESCRIPTION

MINA TRANSITION (MVA.SWR1): From over MVA VORTAC on MVA R-273 and SWR R-093 to SWR VOR/DME, then on SWR R-236 to PEELS INT. Thence

MUSTANG TRANSITION (FMG.SWR1): From over FMG VORTAC on FMG R-218 and SWR R-037 to SWR VOR/DME, then on SWR R-236 to PEELS INT. Thence

LANDING RUNWAYS 3L/R: From over PEELS on heading 200°. Expect RADAR vectors to final approach course.

LANDING RUNWAYS 21L/R: From over PEELS on heading 175°. Expect RADAR vectors to final approach course.

LOST COMMUNICATIONS

RUNWAY 3L: From over PEELS proceed to SGD VORTAC. Expect ILS or LOC RWY 3L approach.

RUNWAY 21R: From over PEELS proceed to SAC VORTAC. Expect ILS or LOC RWY 21L approach.

SW-2, 28 NOV 2024 to 26 DEC 2024

NOTE: Chart not to scale.