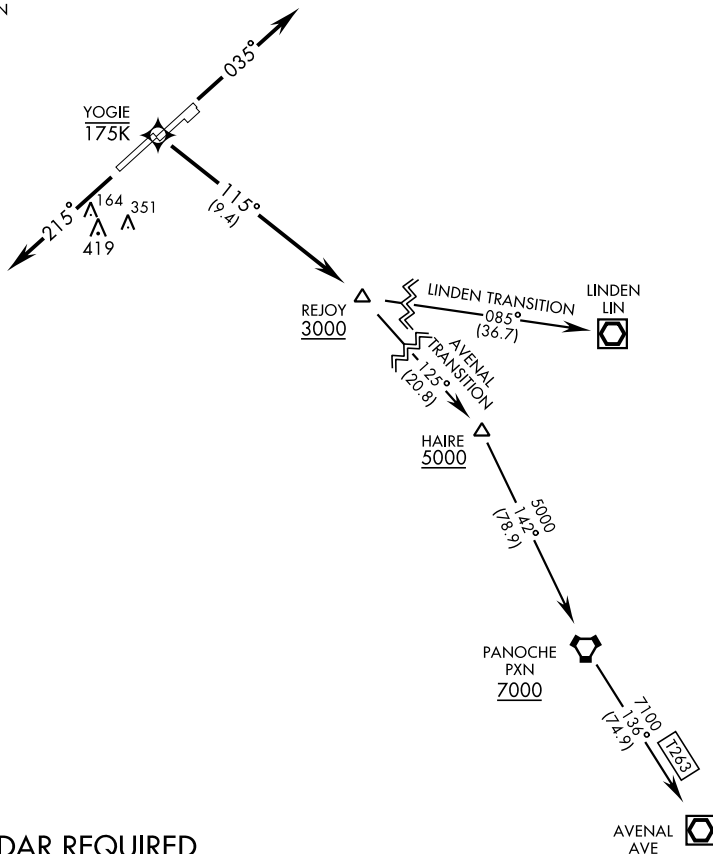


# REJOY ONE DEPARTURE (RNAV) (REJOY1•REJOY)

ATIS 135.55 292.125  
CLNC DEL  
127.55 335.8  
GND CON  
121.8 289.4  
TOWER  
120.75 254.4  
TRAVIS DEP CON  
126.6 306.9

[USAF] AL-488 (CIV)



SW-2, 28 NOV 2024 to 26 DEC 2024

SW-2, 28 NOV 2024 to 26 DEC 2024

RNAV1 - GPS.

## ATC RADAR REQUIRED

### DEPARTURE ROUTE DESCRIPTION

**TAKEOFF RWY 3 L/R:** Climb on heading 035° to 2000, expect ATC RADAR vectors to YOGIE, then track 115° to cross REJOY at or above 3000. Thence...

**TAKEOFF RWY 21L/R:** Climb on heading 215° to 2000, expect ATC RADAR vectors to cross REJOY at or above 3000. Thence...

...via assigned transition. Maintain ATC assigned altitude. Expect further clearance to filed altitude within 10 minutes after departure.

AVENAL TRANSITION: (REJOY1•AVE)

LINDEN TRANSITION: (REJOY 1•LIN)

# REJOY ONE DEPARTURE (RNAV) (REJOY1•REJOY)

Orig 07OCT21