

HOMESTEAD, FLORIDA

# RNAV (GPS) RWY 24

APCH CRS	Rwy Idg	11,201
235°	TDZE	5
	Arprt Elev	6

AL-494 (USAF)

HOMESTEAD ARB (KHST)

**V** \* When ALS inop increase CAT AB RVR to 55, vis to 1 mile;  
 CAT CDE RVR to 60, vis to 1 1/8 miles.  
 \*\* Circling NA NW of Rwy 06-24.

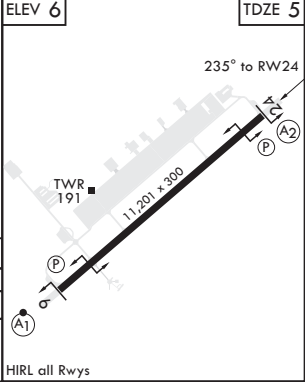
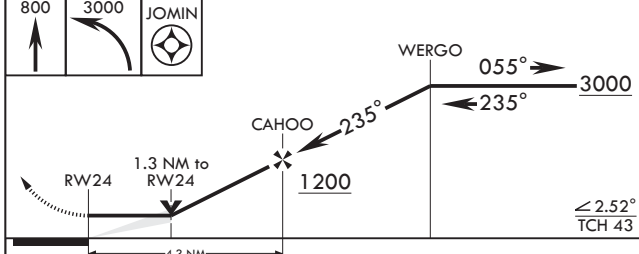


**MISSED APPROACH:** Climb to 800 then climbing left turn to 3000 direct JOMIN and hold.

ATIS*	APP CON/DEP CON	TOWER	GND CON	CLNC DEL
132.275 269.9	123.8 257.675	133.45 279.55	121.75 275.8	121.75 275.8



EMERG SAFE ALT 100 NM 15,100



CATEGORY	A	B	C	D	E
LNVA MDA*	460/40 455 (500-¾)	460/55 455 (500-1)	520-1½ 514 (600-1½)	580-2 574 (600-2)	780-2¾ 774 (800-2¾)
<b>C</b> CIRCLING**	460-1 454 (500-1)	500-1 494 (500-1)	520-1½ 514 (600-1½)	580-2 574 (600-2)	780-2¾ 774 (800-2¾)

HOMESTEAD, FLORIDA 25°29'N - 80°23'W HOMESTEAD ARB (KHST)

Amdt 3 30DEC21  
TERPS

# RNAV (GPS) RWY 24

SE-3, 28 NOV 2024 to 26 DEC 2024

SE-3, 28 NOV 2024 to 26 DEC 2024