

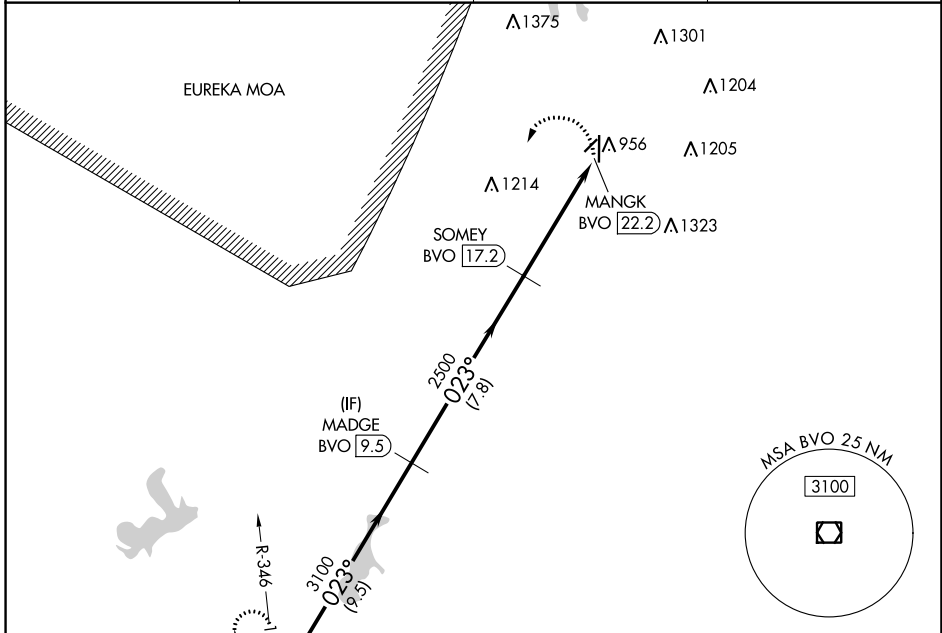
VOR/DME BVO <b>117.9</b> Chan <b>126</b>	APP CRS <b>023°</b>	Rwy Idg TDZE Apt Elev <b>N/A</b> <b>N/A</b> <b>825</b>
--	------------------------	---

# VOR-A

INDEPENDENCE MUNI (IDP)

DME required.		MISSED APPROACH: Climbing left turn to 3100 on BVO VOR/DME R-023 to BVO VOR/DME and hold.	
Circling Rwy 4, 22 NA at night.			

AWOS-3PT <b>118,525</b>	KANSAS CITY CENTER <b>128.6 282,325</b>	CLNC DEL <b>121.65</b>	UNICOM <b>123,05</b> (CTAF)
----------------------------	--	---------------------------	--------------------------------

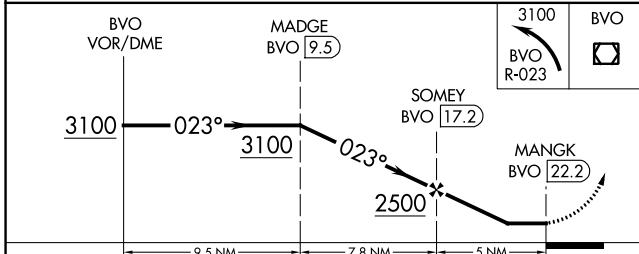
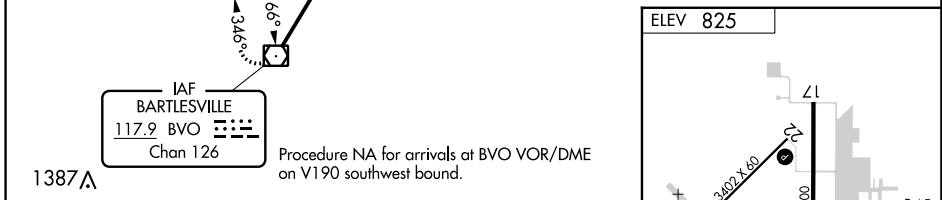


NC-2, 28 NOV 2024 to 26 DEC 2024

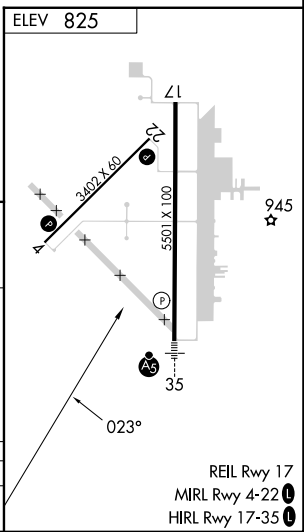
NC-2, 28 NOV 2024 to 26 DEC 2024

IAF  
BARTLESVILLE  
117.9 BVO   
Chan 126

Procedure NA for arrivals at BVO VOR/DME on V190 southwest bound.



CATEGORY	A	B	C	D
CIRCLING	1420-1	595 (600-1)	1420-1½ 595 (600-1½)	1680-2¾ 855 (900-2¾)



REIL Rwy 17  
MIRL Rwy 4-22   
HIRL Rwy 17-35

# VOR-A