

KNOB NOSTER, MISSOURI

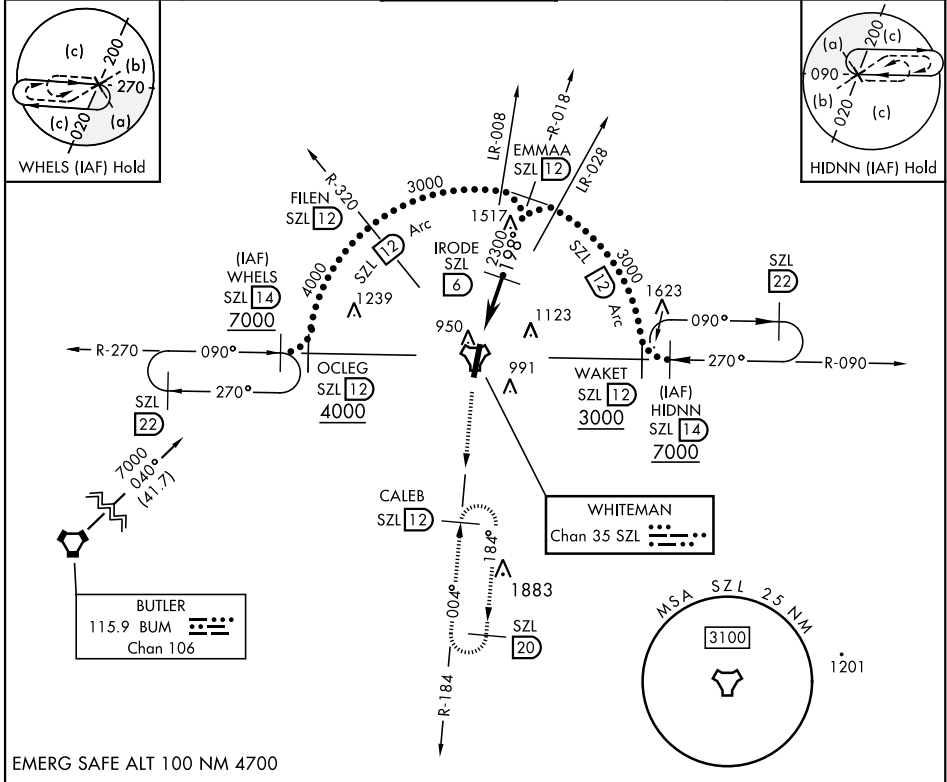
HI-TACAN Z RWY 19

TACAN SZL Chan 35	APCH CRS 198°	Rwy Idg 12,400 TDZE 871 Arprt Elev 871	AL-496 [USAF]	WHITEMAN AFB (KSZL)
-----------------------------	-------------------------	---	---------------	---------------------

V * When ALS inop, increase CAT CDE RVR to 60 and vis to 1½ miles.
 ** Circling not authorized W of Rwy 1-19.

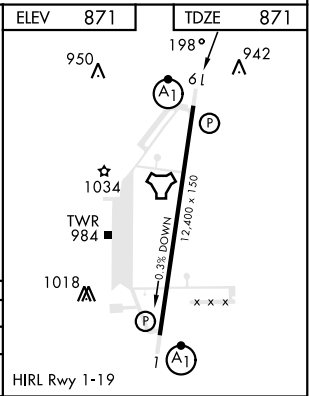
ALSF-1  MISSED APPROACH: Climb to 3000 via SZL TACAN R-184 to CALEB and hold.

ATIS ★ 118.725 239.025	APP CON ★ 127.45 284.0	TOWER ★ 132.4 318.8	GND CON ★ 119.125 275.8	CLNC DEL ★ 121.75 335.8	ASR
----------------------------------	----------------------------------	-------------------------------	-----------------------------------	-----------------------------------	-----



EMERG SAFE ALT 100 NM 4700

3000 SZL R-184	CALEB SZL 12			
TACAN		R-018 EMMAA 12		
SAVBE 1.2		IRODE 6		
0.5 NM		4.8 NM		
2	2300	3000	198°	
2.50°		TCH 47		
CATEGORY	C	D	E	
S-19 *	1260/40	389	(400-¾)	
CIRCLING **	1340-1½ 469 (500-1½)	1460-2	589	(600-2)



KNOB NOSTER, MISSOURI 38°44'N-93°33'W WHITEMAN AFB (KSZL)

Amtd 1 10OCT19

HI-TACAN Z RWY 19

NC-3, 28 NOV 2024 to 26 DEC 2024

NC-3, 28 NOV 2024 to 26 DEC 2024