

KNOB NOSTER, MISSOURI

RNAV (GPS) RWY 19

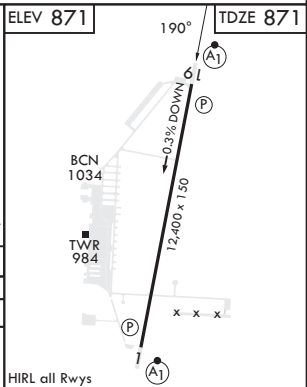
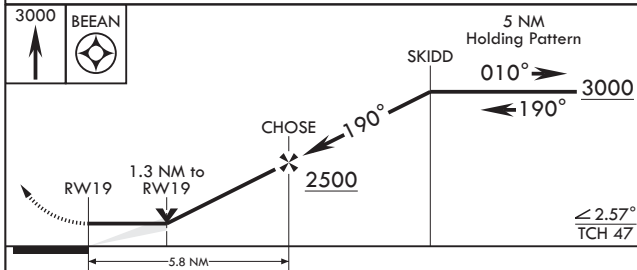
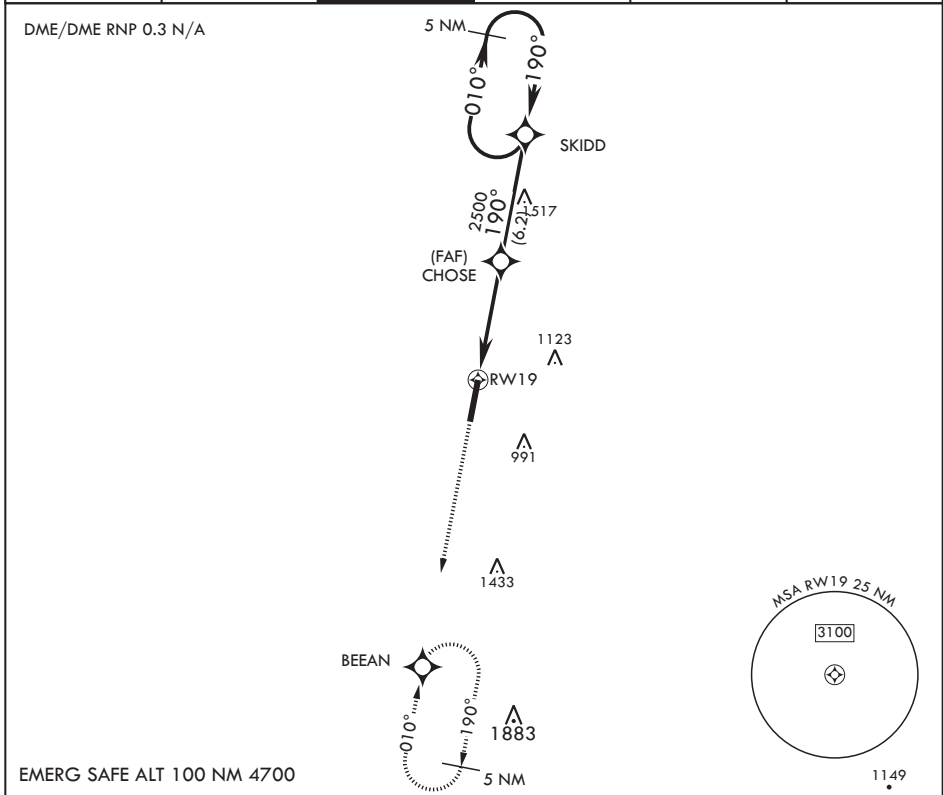
APCH CRS	Rwy Idg	12,400
190°	TDZE	871
	Arprt Elev	871

AL-496 (USAF)

WHITEMAN AFB (KSZL)

<p>⚠ * When ALS inop, increase CAT AB RVR to 55 and vis to 1 mile, CAT CDE RVR to 60 and vis to 1 1/8 miles. ** Circling not authorized W of Rwy 1-19.</p>	<p>ALSF-1</p>	<p>MISSED APPROACH: Climb to 3000 direct BEEAN and hold.</p>
---	---------------	--

ATIS*	APP CON*	TOWER*	GND CON*	CLNC DEL*	ASR
118.725 239.025	127.45 284.0	132.4 318.8	119.125 275.8	121.75 335.8	



CATEGORY	A	B	C	D	E
RNAV MDA*	1260/24	389 (400-½)	1260/35	389 (400-¾)	
CIRCLING**	1300-1 429 (500-1)	1340-1 469 (500-1)	1340-1½ 469 (500-1½)	1460-2	589 (600-2)

KNOB NOSTER, MISSOURI

38°44'N - 93°33'W

WHITEMAN AFB (KSZL)

Amdt 6 10OCT19

RNAV (GPS) RWY 19

NC-3, 28 NOV 2024 to 26 DEC 2024

NC-3, 28 NOV 2024 to 26 DEC 2024