

VOR/DME or TACAN Y RWY 5R

[USAF]

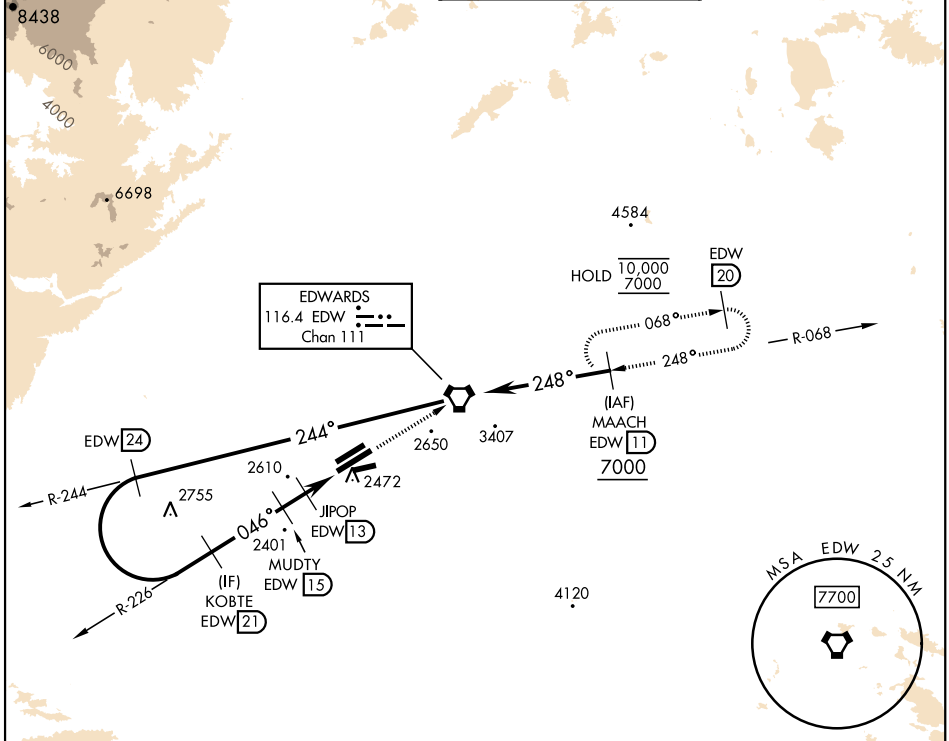
EDWARDS AFB (KEDW)

VORTAC EDW 116.4 Chan 111	APCH CRS 046°	Rwy ldg 15,024 TDZE 2303 Arprt Elev 2311
---	-------------------------	---

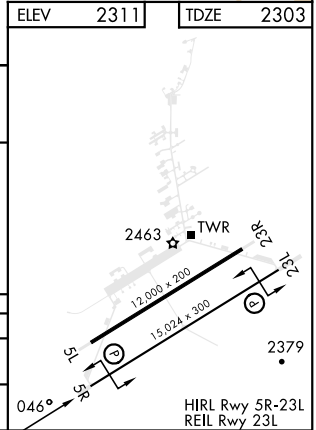
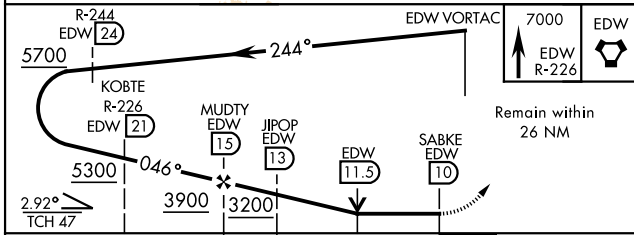
⚠️ *Circling not authorized NW of Rwy 5L-23R.
Circling not authorized at night to Rwy 5L-23R.

MISSED APPROACH: Track EDW VORTAC R-226 to EDW.
Intercept EDW R-068 to MAACH and hold. Maintain 7000.
Missed approach requires use of RNAV or ATC radar monitoring.

ATIS ★ 127.425 269.9	JOSHUA APP/DEP CON 133.65 348.7	TOWER ★ 120.7 (CTAF) 318.1 (CTAF)	GND CON 121.8 225.4
--------------------------------	---	---	-------------------------------



EMERG SAFE ALT 100 NM 16,500



CATEGORY	A	B	C	D	E
S-5R	2820-1 517 (600-1)		2820-1½ 517 (600-1½)	517	(600-1½)
CIRCLING*	2880-1 569 (600-1)		2880-1½ 569 (600-1½)	2880-2	569 (600-2)

VOR/DME or TACAN Y RWY 5R

SW-3, 28 NOV 2024 to 26 DEC 2024

SW-3, 28 NOV 2024 to 26 DEC 2024