

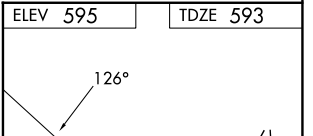
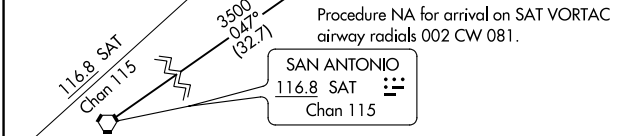
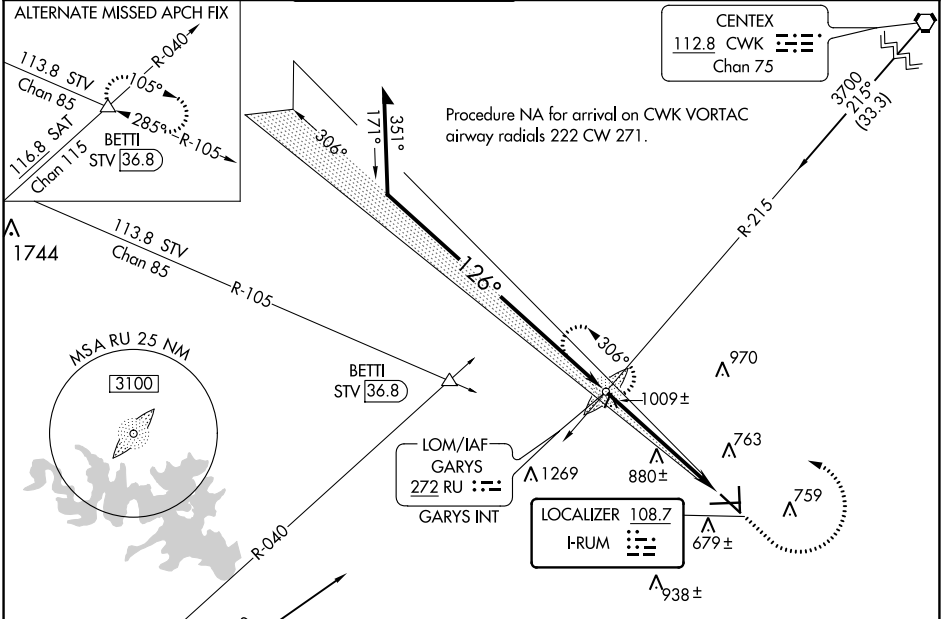
LOC I-RUM	APP CRS	Rwy Idg TDZE	5601
108.7	126°	Apt Elev	593

ILS or LOC RWY 13

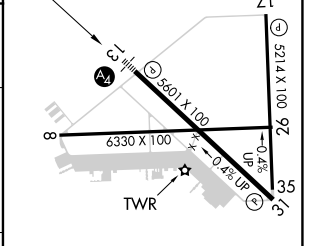
SAN MARCOS RGNL (HYI)

ADF required.	MALS	MISSED APPROACH: Climb to 2000 then climbing left turn to 3200 direct GARYS LOM/INT and hold.
<p>⚠ Circling NA for Cat E southwest of Rwy 13-31. Inop table does not apply to S-ILS 13 all Cats. For inop ALS, increase S-LOC 13 Cat C/D/E visibility to 1/8 SM.</p>		

ATIS ★	AUSTIN APP CON	SAN MARCOS TOWER ★	GND CON	CLNC DEL	CLNC DEL
120.825	119.0 370.85	126.825 (CTAF)	120.125	120.125	121.35 (when twr closed)



CATEGORY	A	B	C	D	E
S-ILS-13	793-3/4 200 (200-3/4)				
S-LOC-13	1260-3/4 667 (700-3/4)		1260-13/4 667 (700-13/4)		
⚠ CIRCLING	1260-1 665 (700-1)		1260-17/8 665 (700-17/8)	1320-21/4 725 (800-21/4)	1340-23/4 745 (800-23/4)



MIRL Rwy 8-26, 13-31, and 17-35					
FAF to MAP 5.5 NM					
Knots	60	90	120	150	180
Min:Sec	5:30	3:40	2:45	2:12	1:50