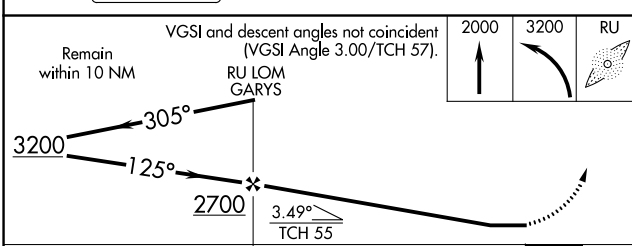
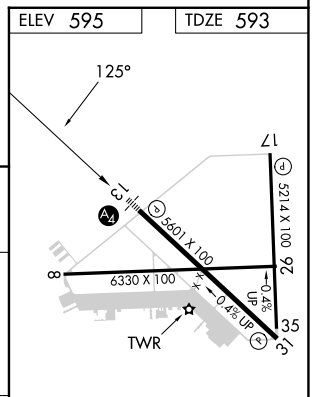
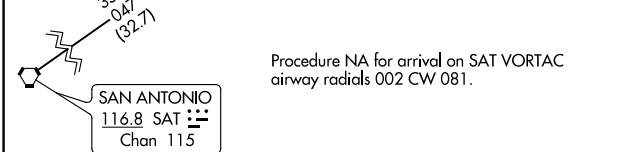
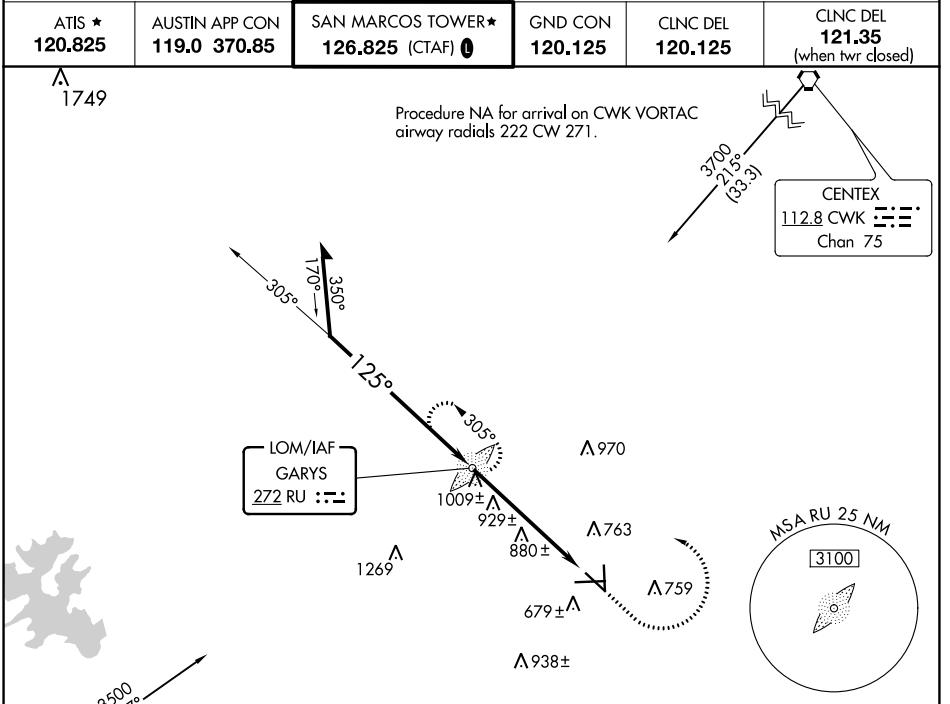


LOM RU	APP CRS	Rwy Idg TDZE	5601
<u>272</u>	<u>125°</u>	Apt Elev	593
			595

# NDB RWY 13

SAN MARCOS RGNL (HYI)

	MISSED APPROACH: Climb to 2000 then climbing left turn to 3200 direct GARYS LOM and hold.				
	ATIS ★ <b>120.825</b>	AUSTIN APP CON <b>119.0 370.85</b>	SAN MARCOS TOWER★ <b>126.825</b> (CTAF)	GND CON <b>120.125</b>	CLNC DEL <b>120.125</b>



CATEGORY	A	B	C	D	MIRL Rwy's 8-26, 13-31, and 17-35 FAF to MAP 5.5 NM
S-13	1240-3/4 647 (700-3/4)		1240-1 5/8 647 (700-1)		
CIRCLING	1240-1 645 (700-1)		1240-1 7/8 645 (700-1 7/8)	1320-2 1/4 725 (800-2 1/4)	Knots 60 90 120 150 180 Min:Sec 5:30 3:40 2:45 2:12 1:50

SC-3, 28 NOV 2024 to 26 DEC 2024

SC-3, 28 NOV 2024 to 26 DEC 2024