

WAAS CH <b>78332</b> <b>W26A</b>	APP CRS <b>261°</b>	Rwy Idg TDZE Apt Elev	<b>6330</b> <b>587</b> <b>595</b>
--	------------------------	-----------------------------	---

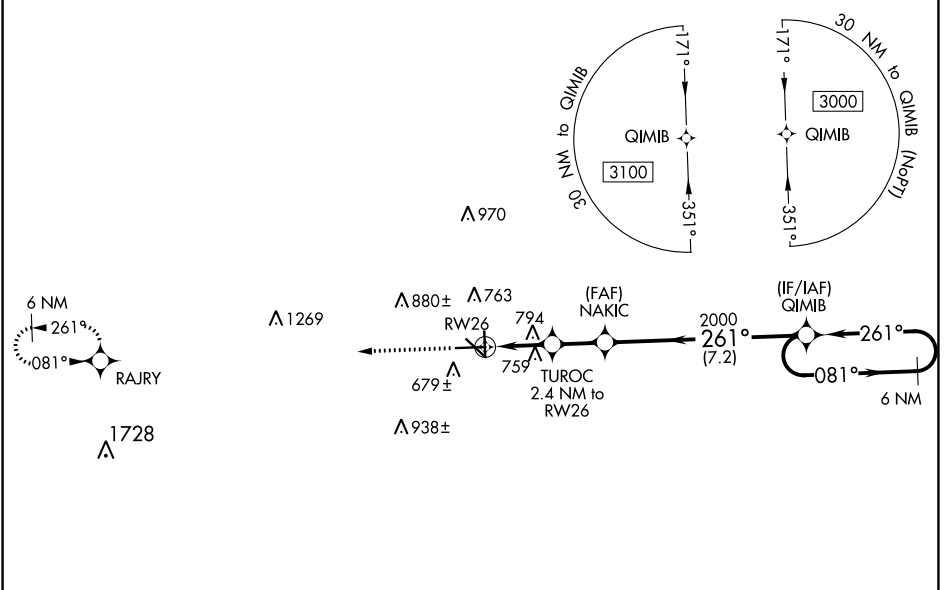
# RNAV (GPS) RWY 26

SAN MARCOS RGNL (HYI)

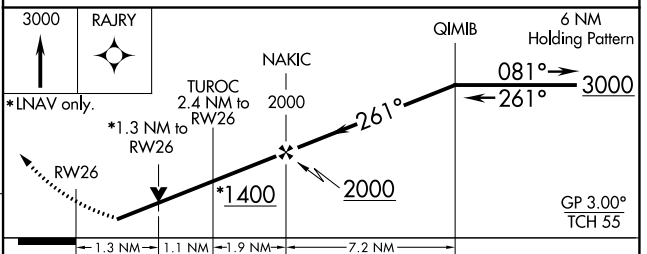
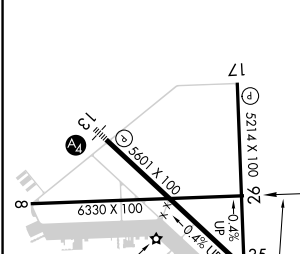
**⚠** Baro-VNAV NA when using New Braunfels altimeter setting. For uncompensated Baro-VNAV systems, LNAV/VNAV NA below -16°C (3°F) or above 54°C (130°F). When local altimeter setting not received, use New Braunfels altimeter setting and increase all DA 43 feet and all MDA 60 feet; increase LPV and LNAV/VNAV all Cats, and LNAV Cat C/D/E visibility 1/8 mile and Circling Cat C/D visibility 1/4 mile. Circling NA for Cat E SW of Rwy 13-31. DME/DME RNP-0.3 NA. VDP NA with New Braunfels altimeter setting. Helicopter visibility reduction below 3/4 SM NA.

**MISSED APPROACH:** Climb to 3000 direct RAJRY and hold.

ATIS ★ <b>120.825</b>	AUSTIN APP CON <b>119.0 370.85</b>	SAN MARCOS TOWER★ <b>126.825</b> (CTAF) <b>0</b>	GND CON <b>120.125</b>	CLNC DEL <b>120.125</b>	CLNC DEL <b>121.35</b> (when twr closed)
--------------------------	---------------------------------------	---	---------------------------	----------------------------	--



ELEV <b>595</b>	TDZE <b>587</b>
-----------------	-----------------



CATEGORY	A	B	C	D	E
LPV DA		837-3/4	250 (300-3/4)		
LNAV/VNAV DA		866-7/8	279 (300-7/8)		
LNAV MDA	1060-1	473 (500-1)	1060-1 3/8	473 (500-1 3/8)	
<b>C</b> CIRCLING	1080-1 485 (500-1)	1120-1 525 (600-1)	1240-1 3/4 645 (700-1 3/4)	1320-2 1/4 725 (800-2 1/4)	1340-2 3/4 745 (800-2 3/4)