

WAAS CH <b>70632</b> <b>W35A</b>	APP CRS <b>351°</b>	Rwy ldg TDZE <b>583</b> Apt Elev <b>595</b>	<b>5214</b> <b>583</b> <b>595</b>
----------------------------------------	------------------------	---------------------------------------------------	-----------------------------------------

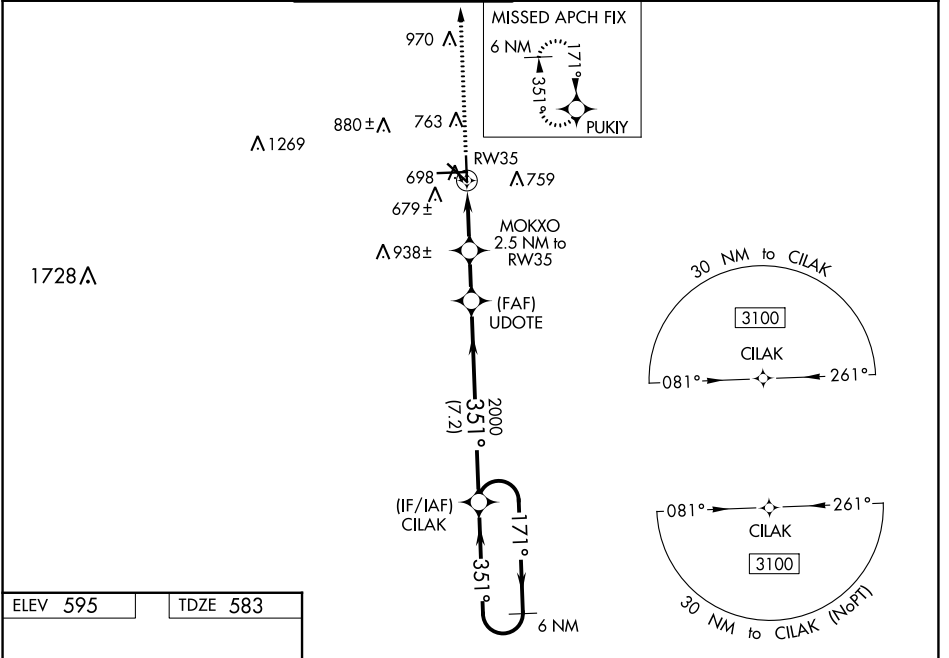
# RNAV (GPS) RWY 35

SAN MARCOS RGNL (HYI)

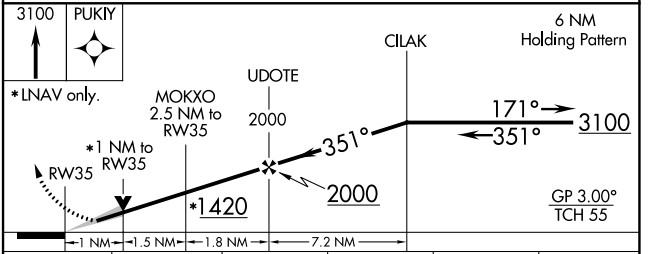
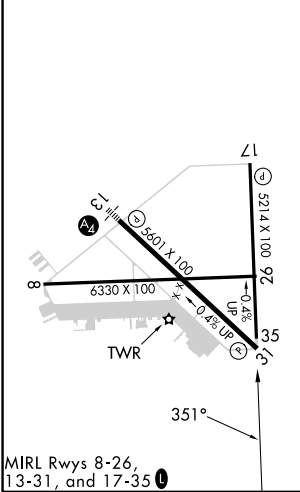
**⚠** Baro-VNAV NA when using New Braunfels altimeter setting. For uncompensated Baro-VNAV systems, LNAV/VNAV NA below -16°C (3°F) or above 54°C (130°F). When local altimeter setting not received, use New Braunfels altimeter setting and increase all DA 43 feet and all MDA 60 feet; increase LPV all Cats and LNAV/VNAV all Cats visibility 1/8 mile; and increase LNAV Cat C/D/E visibility and Circling Cat C/D visibility 1/4. Circling NA for Cat E SW of Rwy 13-31. DME/DME RNP-0.3 NA. VDP NA with New Braunfels altimeter setting.

**MISSED APPROACH:**  
Climb to 3100 direct PUKIY and hold.

ATIS ★ <b>120.825</b>	AUSTIN APP CON <b>119.0 370.85</b>	SAN MARCOS TOWER ★ <b>126.825</b> (CTAF) <b>1</b>	GND CON <b>120.125</b>	CLNC DEL <b>120.125</b>	CLNC DEL <b>121.35</b> (when twr closed)
--------------------------	---------------------------------------	------------------------------------------------------	---------------------------	----------------------------	------------------------------------------------



ELEV 595	TDZE 583
----------	----------



CATEGORY	A	B	C	D	E
LPV DA		833-3/4	250 (300-3/4)		
LNAV/VNAV DA		884-1	301 (300-1)		
LNAV MDA	960-1	377 (400-1)	960-1 1/8	377 (400-1 1/8)	
<b>C</b> CIRCLING	1080-1 485 (500-1)	1120-1 525 (600-1)	1240-1 3/4 645 (700-1 1/4)	1320-2 1/4 725 (800-2 1/4)	1340-2 3/4 745 (800-2 3/4)

AUSTIN, TEXAS  
Orig-B 23JUN16

29°54'N-97°52'W

# SAN MARCOS RGNL (HYI) RNP (GPS) RWY 35

SC-3, 28 NOV 2024 to 26 DEC 2024

SC-3, 28 NOV 2024 to 26 DEC 2024