

WAAS CH 72932	APP CRS 081°	Rwy Idg TDZE Apt Elev	6330 589 595
-------------------------	------------------------	-----------------------------	-----------------------------------------

RNAV (GPS) RWY 8

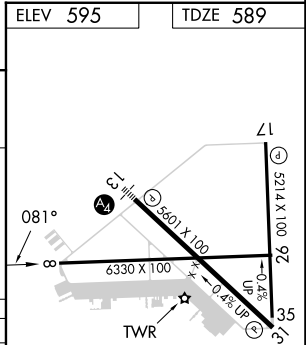
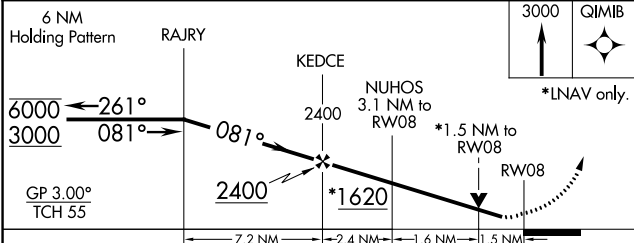
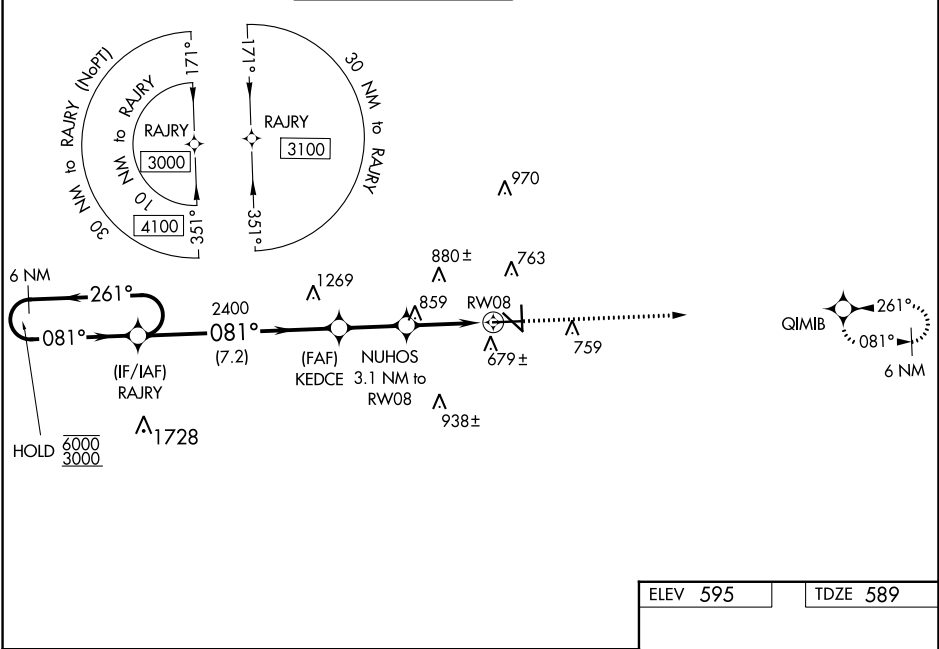
SAN MARCOS RGNL (HYI)

RNP APCH.

⚠ Circling NA for Cat E SW of Rwy 13-31; Rwy 8 helicopter visibility reduction below 3/4 SM NA. Baro-VNAV NA when using New Braunfels altimeter setting. For uncompensated Baro-VNAV systems, LNAV/VNAV NA below -16°C or above 54°C. VDP NA with New Braunfels altimeter setting. When local altimeter setting not received, use New Braunfels altimeter setting and increase LPV DA to 882, LNAV/VNAV DA to 953 and increase all MDA 60 feet; increase LNAV Cat C/D/E and Circling Cat C/D visibility 1/4 SM.

MISSED APPROACH:
Climb to 3000 direct QIMIB and hold.

ATIS ★ 120.825	AUSTIN APP CON 119.0 370.85	SAN MARCOS TOWER★ 126.825 (CTAF) 0	GND CON 120.125	CLNC DEL 120.125	CLNC DEL 121.35 (when twr closed)
--------------------------	---------------------------------------	-----------------------------------------------------	---------------------------	----------------------------	------------------------------------------------



CATEGORY	A	B	C	D	E
LPV DA	839-1		250 (300-1)		
LNAV/VNAV DA	910-1		321 (400-1)		
LNAV MDA	1120-1	531 (600-1)	1120-1½		531 (600-1½)
C CIRCLING	1120-1	525 (600-1)	1240-1¾ 645 (700-1¾)	1320-2¼ 725 (800-2¼)	1340-2¾ 745 (800-2¾)

MIRL Rwy 8-26, 13-31, and 17-35 **0**

SC-3, 28 NOV 2024 to 26 DEC 2024

SC-3, 28 NOV 2024 to 26 DEC 2024