

(DIVYD2.DIVYD) 24025

DIVYD TWO DEPARTURE (RNAV)

AL-504 (FAA)

JACKSON HOLE (JAC)
JACKSON, WYOMING

RNAV 1 - GPS.

RADAR required for non-GPS equipped aircraft.

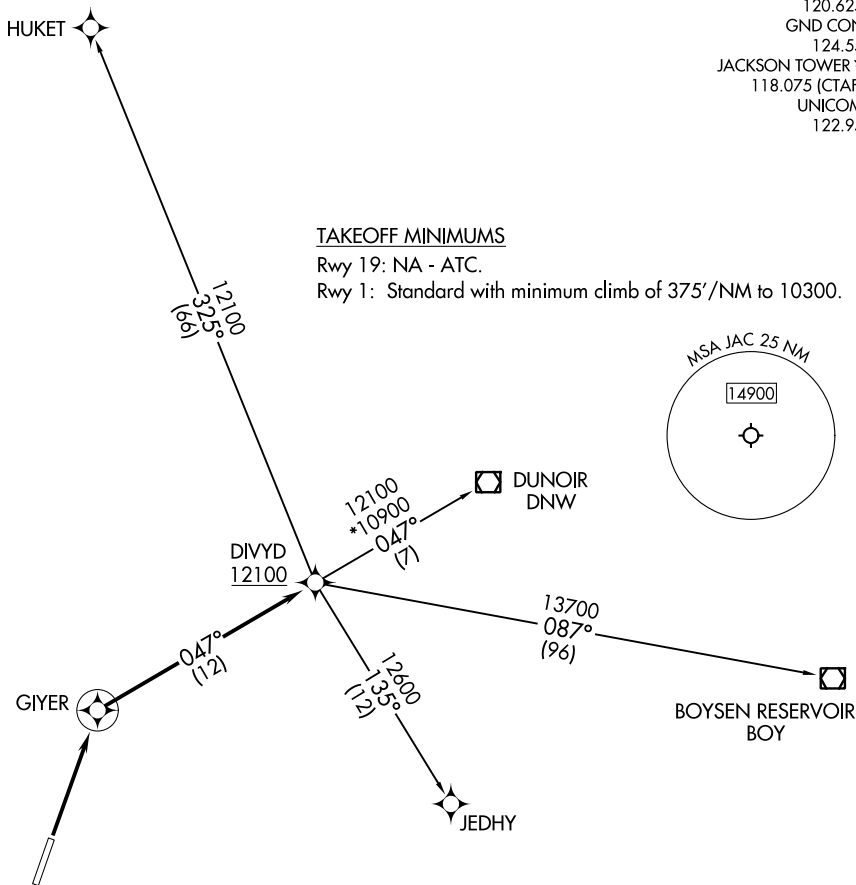
**TOP ALTITUDE:
ASSIGNED BY ATC**

SALT LAKE CENTER
133.25 285.6
D-ATIS
120.625
GND CON
124.55
JACKSON TOWER *
118.075 (CTAF)
UNICOM
122.95

TAKEOFF MINIMUMS

Rwy 19: NA - ATC.

Rwy 1: Standard with minimum climb of 375'/NM to 10300.



NW-1, 28 NOV 2024 to 26 DEC 2024

NW-1, 28 NOV 2024 to 26 DEC 2024

NOTE: Chart not to scale.



DEPARTURE ROUTE DESCRIPTION

TAKEOFF RUNWAY 1: Climb direct GIYER, then on track 047° to cross DIVYD at or above 12100, thence. . . .

. . . . (transition). Maintain ATC assigned altitude, expect filed altitude 10 minutes after departure.

BOYSEN RESERVOIR TRANSITION (DIVYD2.BOY)

DUNOIR TRANSITION (DIVYD2.DNW)

HUKET TRANSITION (DIVYD2.HUKET)

JEDHY TRANSITION (DIVYD2.JEDHY)

DIVYD TWO DEPARTURE (RNAV)

(DIVYD2.DIVYD) 25JAN24

JACKSON, WYOMING
JACKSON HOLE (JAC)