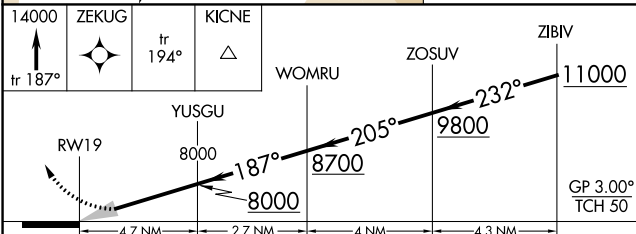
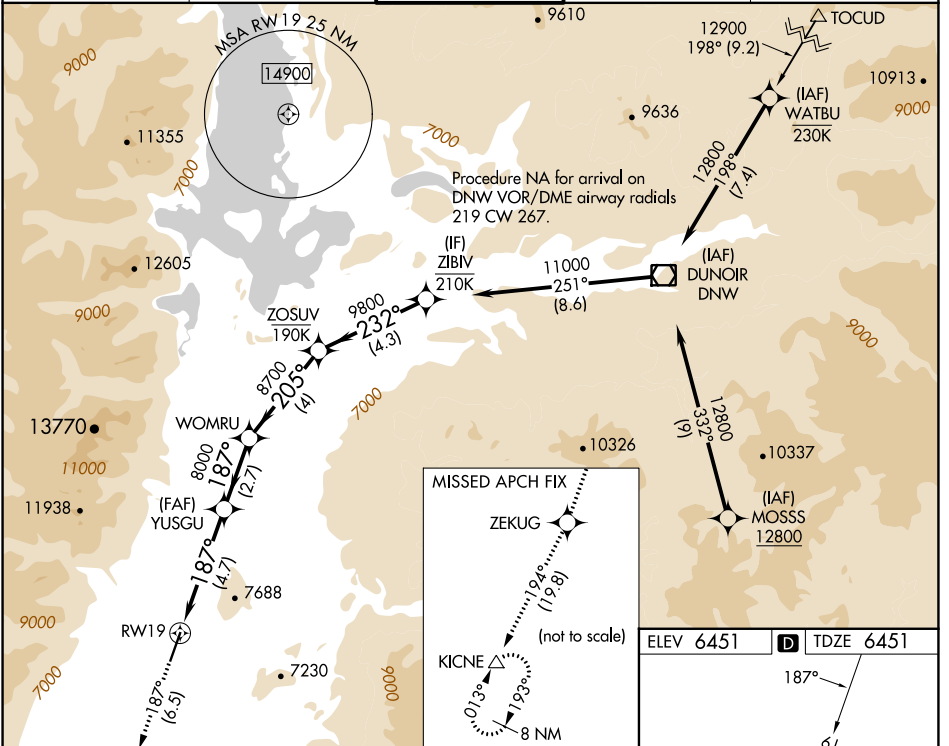


APP CRS	Rwy Idg	6300
187°	TDZE	6451
	Apt Elev	6451

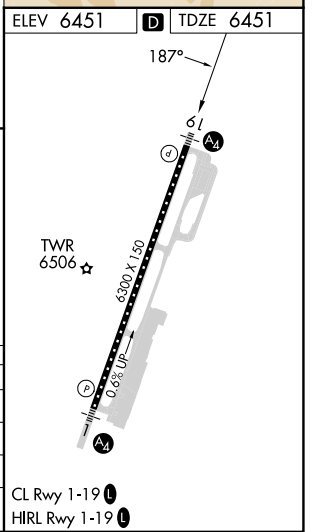
RNAV (RNP) Y RWY 19

JACKSON HOLE (JAC)

RNP AR APCH-GPS.		MALS	MISSED APPROACH: Climb to 14000 on track 187° to ZEKUG and on track 194° to KICNE and hold, continue climb-in-hold to 14000.	
For uncompensated Baro-VNAV systems, procedure NA below -27°C or above 54°C. For inop ALS, increase RNP 0.30 all Cats visibility to 1 3/4 SM.			*Missed approach requires minimum climb of 226 feet per NM to 11400. #Missed approach requires minimum climb of 210 feet per NM to 11600.	
D-ATIS	SALT LAKE CENTER	JACKSON TOWER*	GND CON	UNICOM
120.625	133.25 285.6	118.075 (CTAF)	124.55	122.95



CATEGORY	A	B	C	D
RNP 0.11 DA*		6781/40	330 (400-3/4)	
RNP 0.30 DA#		6935/60	484 (500-1 1/4)	
RNP 0.30 DA		7038-1 3/8	587 (600-1 3/8)	



AUTHORIZATION REQUIRED

NW-1, 28 NOV 2024 to 26 DEC 2024

NW-1, 28 NOV 2024 to 26 DEC 2024