

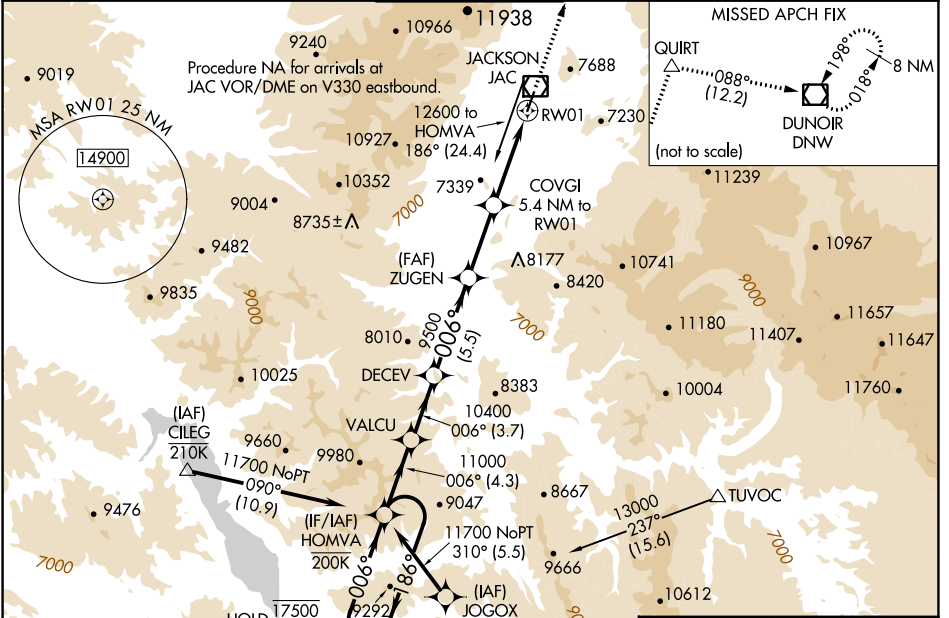
WAAS CH 58299 W01A	APP CRS 006°	Rwy Idg 6300 TDZE 6431 Apt Elev 6451
--	------------------------	---

RNAV (GPS) X RWY 1

JACKSON HOLE (JAC)

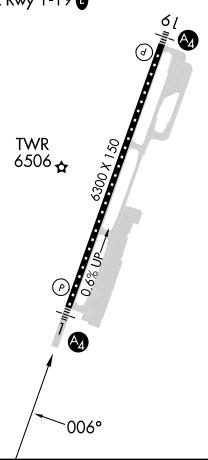
RNP APCH-GPS.	MALS A2	MISSED APPROACH: Climb to 14000 direct QUIRT and on track 088° to DNW VOR/DME and hold, continue climb-in-hold to 14000. *Missed approach requires minimum climb of 385 feet per NM to 7700.
<p>▼ Circling NA east of Rwy 1-19. Baro-VNAV NA.</p> <p>▲ Circling NA for Cat D. Inop table does not apply to LPV, LPV*, LNAV/VNAV, and LNAV Cat C/D.</p> <p>☁ -22°C</p>		

D-ATIS 120.625	SALT LAKE CENTER 133.25 285.6	JACKSON TOWER* 118.075 (CTAF) 1	GND CON 124.55	UNICOM 122.95
--------------------------	---	--	--------------------------	-------------------------



ELEV 6451	D	TDZE 6431
-----------	---	-----------

<p>7 NM Holding Pattern</p> <p>17500 ← 186°</p> <p>11700 → 006°</p> <p>GP 3.00° TCH 50</p>	HOMVA	VALCU	DECEV	ZUGEN	COVGI	QUIRT	Ir 088°	DNW
	4.3 NM	3.7 NM	5.5 NM	4.1 NM	2.1 NM	3.4 NM		
CATEGORY	A	B	C	D				
LPV DA*	6651/40		220 (200-¾)					
LPV DA	7445-4		1014 (1000-4)					
LNAV/VNAV DA	7327-4		896 (900-4)					
LNAV MDA	7540/55 1109 (1100-1)	7540-1½ 1109 (1100-1½)	7540-3 1109 (1100-3)					
CIRCLING	7540-1½ 1089 (1100-1½)	7540-1½ 1089 (1100-1½)	7560-3 1109 (1200-3)					NA



NW-1, 28 NOV 2024 to 26 DEC 2024

NW-1, 28 NOV 2024 to 26 DEC 2024