

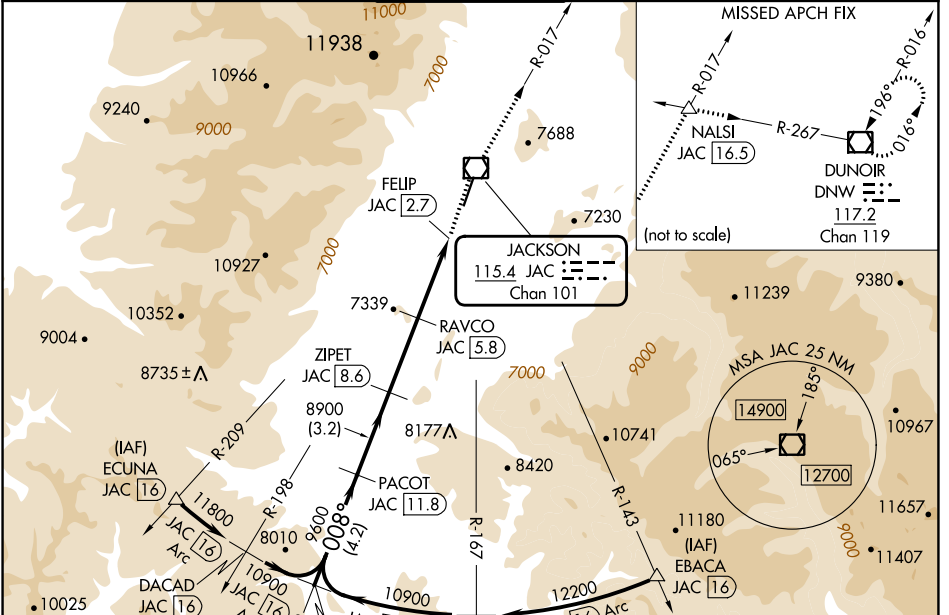
VOR/DME JAC	APP CRS	Rwy Idg	6300
115.4	008°	TDZE	6431
Chan 101		Apt Elev	6451

VOR RWY 1

JACKSON HOLE (JAC)

DME required.	MALS	MISSED APPROACH: Climb to 14000 direct JAC VOR/DME and on JAC R-017 to NALSI INT/JAC 16.5 DME and right turn on DNW R-267 to DNW VOR/DME and hold, continue climb-in-hold to 14000.
<p>⚠ Circling NA east of Rwy 1-19. Circling NA for Cat D. Inop table does not apply to S-1</p> <p>❄ -22°C</p>		

D-ATIS 120.625	SALT LAKE CENTER 133.25 285.6	JACKSON TOWER* 118.075 (CTAF)	GND CON 124.55	UNICOM 122.95
--------------------------	---	---	--------------------------	-------------------------



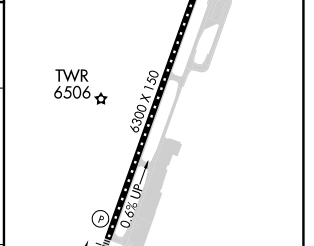
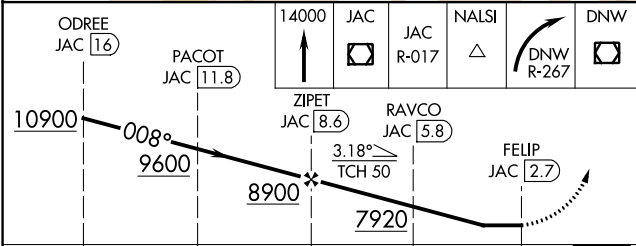
NW-1, 28 NOV 2024 to 26 DEC 2024

NW-1, 28 NOV 2024 to 26 DEC 2024

ELEV 6451	TDZE 6431
CL Rwy 1-19	HIRL Rwy 1-19

ODREE JAC 16	PACOT JAC 11.8	14000 JAC	JAC R-017	NALSI	DNW R-267	DNW
10900	9600	8900	7920	FELIP JAC 2.7		
4.2 NM	3.2 NM	2.8 NM	3.1 NM	1.3 NM		

ODREE JAC 16	PACOT JAC 11.8	ZIPET JAC 8.6	RAVCO JAC 5.8	FELIP JAC 2.7
--------------	----------------	---------------	---------------	---------------



CATEGORY	A	B	C	D
S-1	7800/55 1369 (1400-1)	7800-1¼ 1369 (1400-1¼)	7800-3 1369 (1400-3)	
CIRCLING	7800-1¼ 1349 (1400-1¼)	7800-1½ 1349 (1400-1½)	7800-3 1349 (1400-3)	NA