

VOR/DME JAC 115.4 Chan 101	APP CRS 193°	Rwy Idg TDZE Apt Elev	6300 6451 6451
--	------------------------	-----------------------------	---

VOR RWY 19

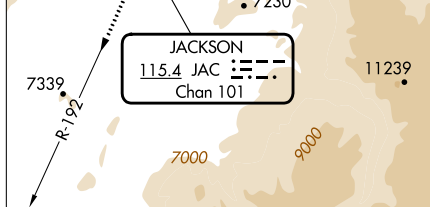
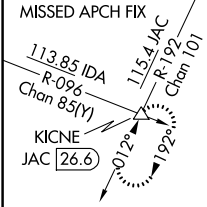
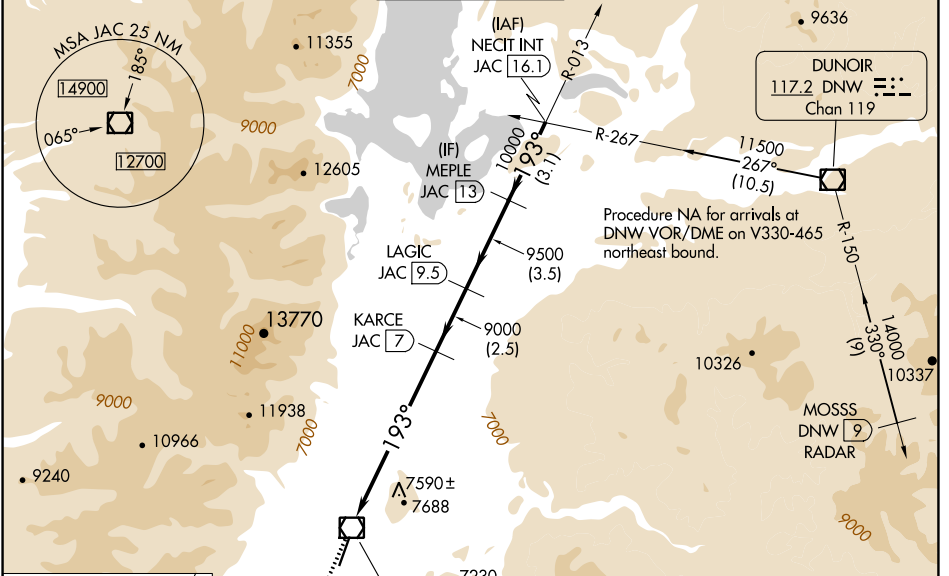
JACKSON HOLE (JAC)

DME required. RADAR required for procedure entry at MOSSS.

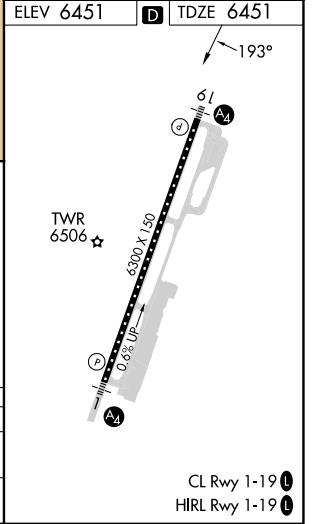
⚠ Circling NA east of Rwy 1-19. Rwy 19 helicopter visibility reduction below RVR 4000 NA. Circling NA for Cat D.
⚠ Inop table does not apply to S-19 Cat C/D.

MALS **⚠** MISSED APPROACH: Climb to 14000 on JAC VOR/DME R-192 to KICNE INT/26.6 DME and hold, continue climb-in-hold to 14000.

D-ATIS 120.625	SALT LAKE CENTER 133.25 285.6	JACKSON TOWER* 118.075 (CTAF)	GND CON 124.55	UNICOM 122.95
--------------------------	---	---	--------------------------	-------------------------



ELEV 6451	TDZE 6451
-----------	-----------



14000	KICNE				
JAC R-192	△				
	JAC VOR/DME	JAC [4]	KARCE JAC [7]	LAGIC JAC [9.5]	MEPLU JAC [13]
					NECIT INT JAC [16.1]
					11500
					10000
					9500
					9000
					193°
					3.20° TCH 50
					4 NM
					3.1 NM
					2.5 NM
					3.5 NM
					3.1 NM

CATEGORY	A	B	C	D
S-19	7900/55 1449 (1500-1)	7900-1½ 1449 (1500-1½)	7900-3 1449 (1500-3)	
CIRCLING	7900-1¼ 1449 (1500-1¼)	7900-1½ 1449 (1500-1½)	7900-3 1449 (1500-3)	NA

NW-1, 28 NOV 2024 to 26 DEC 2024

NW-1, 28 NOV 2024 to 26 DEC 2024

CL Rwy 1-19
HIRL Rwy 1-19