

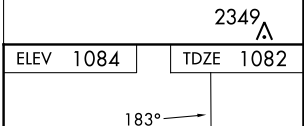
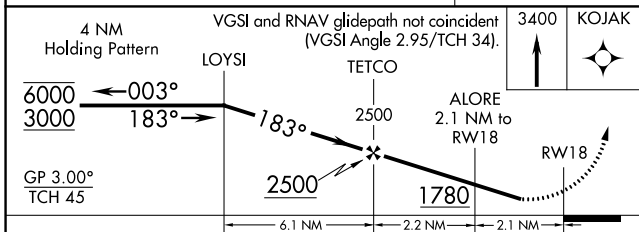
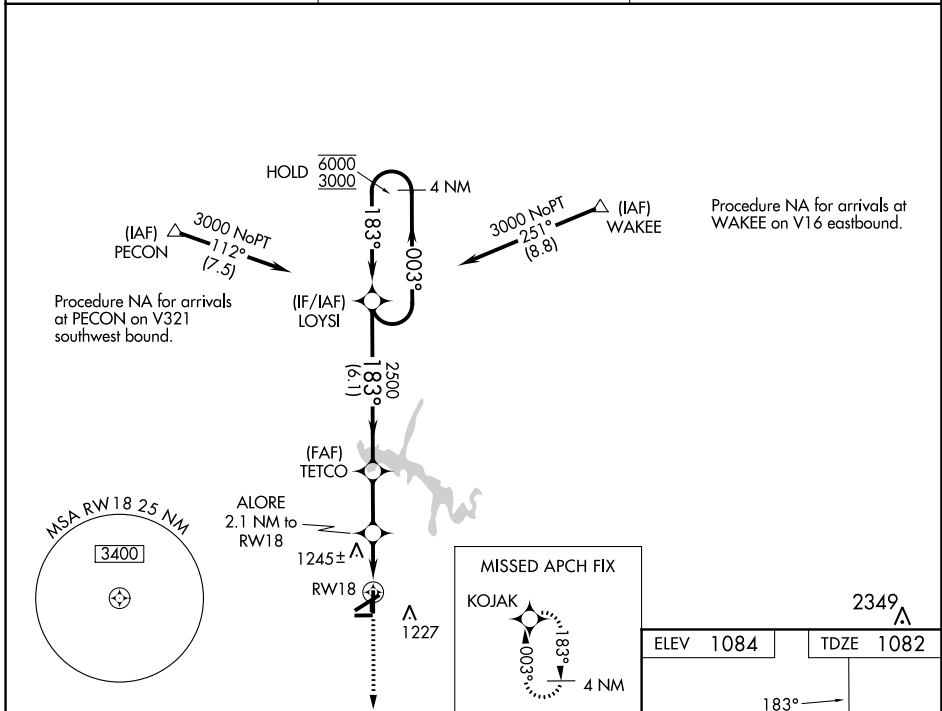
WAAS CH 63023 W18A	APP CRS 183°	Rwy Idg TDZE Apt Elev	4205 1082 1084
--	------------------------	-----------------------------	---

RNAV (GPS) RWY 18

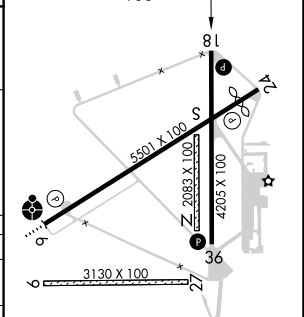
TULLAHOMA RGNL/WM NORTHERN FLD (THA)

RNP APCH - GPS.	MISSED APPROACH: Climb to 3400 direct KOJAK and hold.
⚠ Circling NA to Rwy 9 and 27. Rwy 18 helicopter visibility reduction below 1 SM NA. Rwy 18 Straight-In and Circling minimums NA at night. For uncompensated Baro-VNAV systems, LNAV/VNAV NA below -17°C or above 37°C.	

AWOS-3 128.325	MEMPHIS CENTER 128.15 323.125	UNICOM 123.0 (CTAF)
--------------------------	---	-------------------------------



CATEGORY	A	B	C	D
LPV DA		1436-1	354 (400-1)	
LNAV/VNAV DA		1554-1 ³ / ₈	472 (500-1 ³ / ₈)	
LNAV MDA	1500-1	418 (500-1)	1500-1 ¹ / ₈	418 (500-1 ¹ / ₈)
C CIRCLING	1540-1 456 (500-1)	1580-1 496 (500-1)	1620-1 ¹ / ₂ 536 (600-1 ¹ / ₂)	1640-2 556 (600-2)



MIRL Rwy 6-24 and 18-36
REIL Rwy 6, 18, 24 and 36

SE-1, 28 NOV 2024 to 26 DEC 2024

SE-1, 28 NOV 2024 to 26 DEC 2024