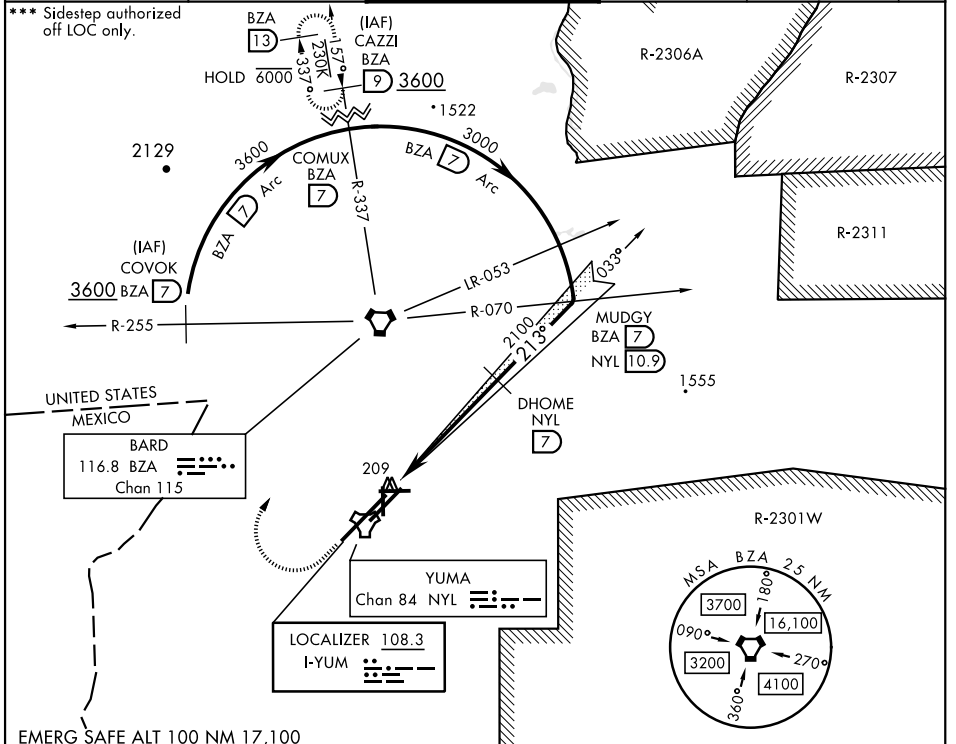


ILS or LOC/DME RWY 21R

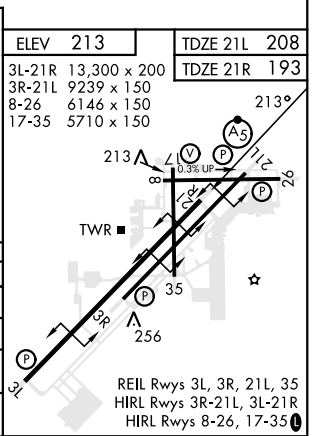
LOC I-YUM 108.3	APCH CRS 213°	Rwy Ldg 21L 9239 21R 13,300	TDZE 21L 208 21R 193	AL-511 [USN]	YUMA MCAS/YUMA INTL (KNYL)
Arpt Elev 213					

VOR required.
 * When ALS inop, increase vis to 3/4 mile.
 ** When ALS inop, increase CAT AB vis to 1 mile, CAT CD vis to 1 1/8 miles.

ATIS ★ 118.8 273.5	APP CON 124.7 371.975	TOWER ★ 119.3 (CTAF) 0 377.075	GND CON 121.9 314.0	CLNC CAZL 118.0 336.4	ASR/PAR
------------------------------	---------------------------------	--	-------------------------------	---------------------------------	---------



EMERG SAFE ALT 100 NM 17,100	900	3600	BZA	MUDGY R-070 BZA (7) NYL (10.9)	COMUX R-337 BZA (7)	COVOK R-255 BZA (7)
↑	↷	⬠				
VDI and ILS not coincident.						
	HODKO NYL (1.7)	NYL (2.3)		213°	3000	3600
				2100	Arc (7)	3600
	0.5	5.3 NM				GS 3.00° TCH 54
CATEGORY	A	B	C	D		
S-ILS 21R *	393-1/2		200	(200-1/2)		
S-LOC 21R **	600-1/2	407 (400-1/2)	600-3/4	407 (400-3/4)		
SIDESTEP 21L ***	600-1	392 (400-1)	600-1 1/8	392 (400-1 1/8)		
CIRCLING	680-1 467 (500-1)	700-1 487 (500-1)	800-1 1/2 587 (600-1 1/2)	800-2 587 (600-2)		



YUMA, ARIZONA 32° 39' N - 114° 36' W YUMA MCAS/YUMA INTL (KNYL)

ILS or LOC/DME RWY 21R

SW-4, 28 NOV 2024 to 26 DEC 2024

SW-4, 28 NOV 2024 to 26 DEC 2024