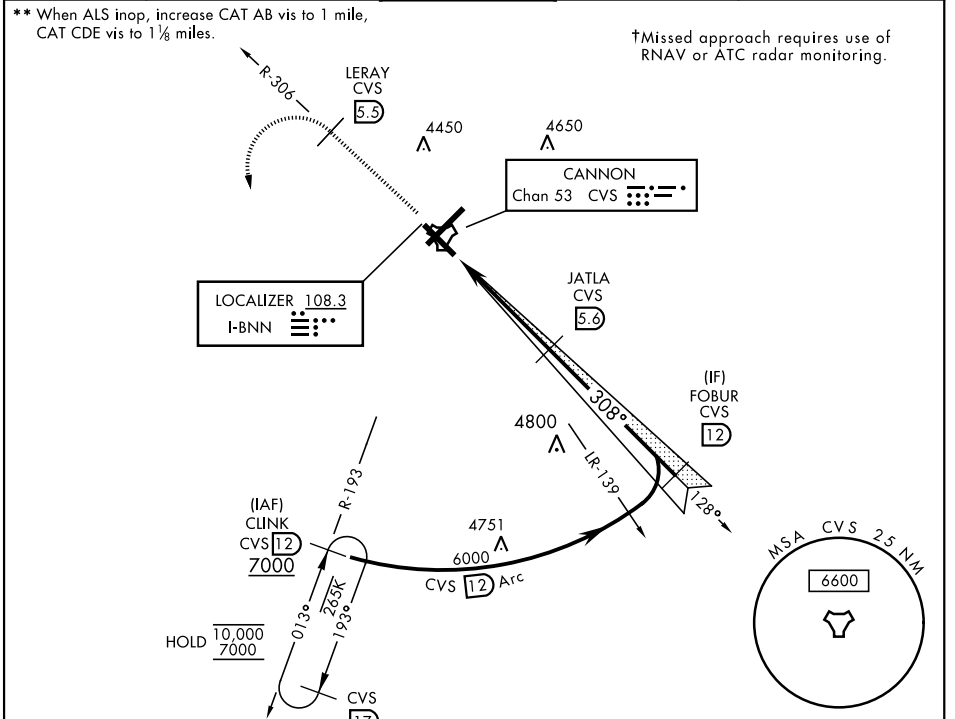


CLOVIS, NEW MEXICO

ILS or LOC RWY 31

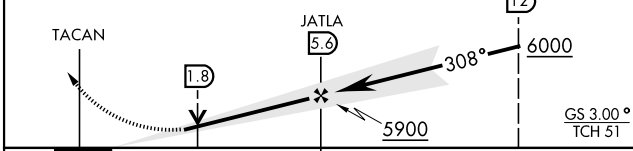
LOC I-BNN 108.3	APCH CRS 308°	Rwy Idg 8196 TDZE 4270 Arprt Elev 4295	AL-512 [USAF]	CANNON AFB (KCVS)
---------------------------	-------------------------	---	---------------	-------------------

ATC RADAR or DME required.		SSALR (A3)	† MISSED APPROACH: Climb to 6000 out CVS TACAN R-306 to 5.5 DME (LERAY) then turn left climbing to 7000 intercept CVS R-193 to 12 DME (CLINK) and hold.		
* When ALS inop, increase vis to ¼ mile.					
ATIS 119.1 269.9	CANNON APP CON 118.425 352.1	CANNON TOWER 120.4 270.25	GND CON 121.9 275.8	CLNC DEL 120.2 293.225	

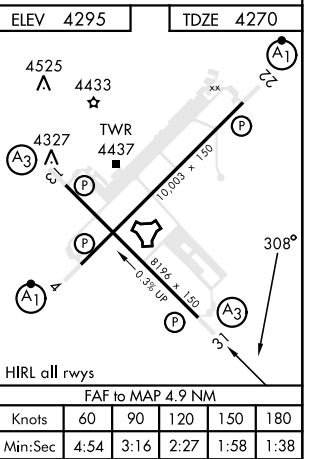


EMERG SAFE ALT 100 NM 9000

6000	LERAY CVS R-306 (5.5)	7000	CLINK CVS R-193 (12)	VGSI TCH (41') and the procedure TCH (51') is greater than 3'.
------	-----------------------	------	----------------------	--



CATEGORY	A	B	C	D	E
S-ILS 31*	4470-½		200	(200-½)	
S-LOC 31**	4660-½ 390 (400-½)		4660-5/8 390 (400-5/8)		
CIRCLING	4840-1 545 (600-1)		4860-1½ 565 (600-1½)	5000-2¼ 705 (800-2¼)	5020-2½ 725 (800-2½)



CLOVIS, NEW MEXICO 34°23'N-103°19'W CANNON AFB (KCVS)

Amdt 4 16AUG18

ILS or LOC RWY 31

SW-1, 28 NOV 2024 to 26 DEC 2024

SW-1, 28 NOV 2024 to 26 DEC 2024